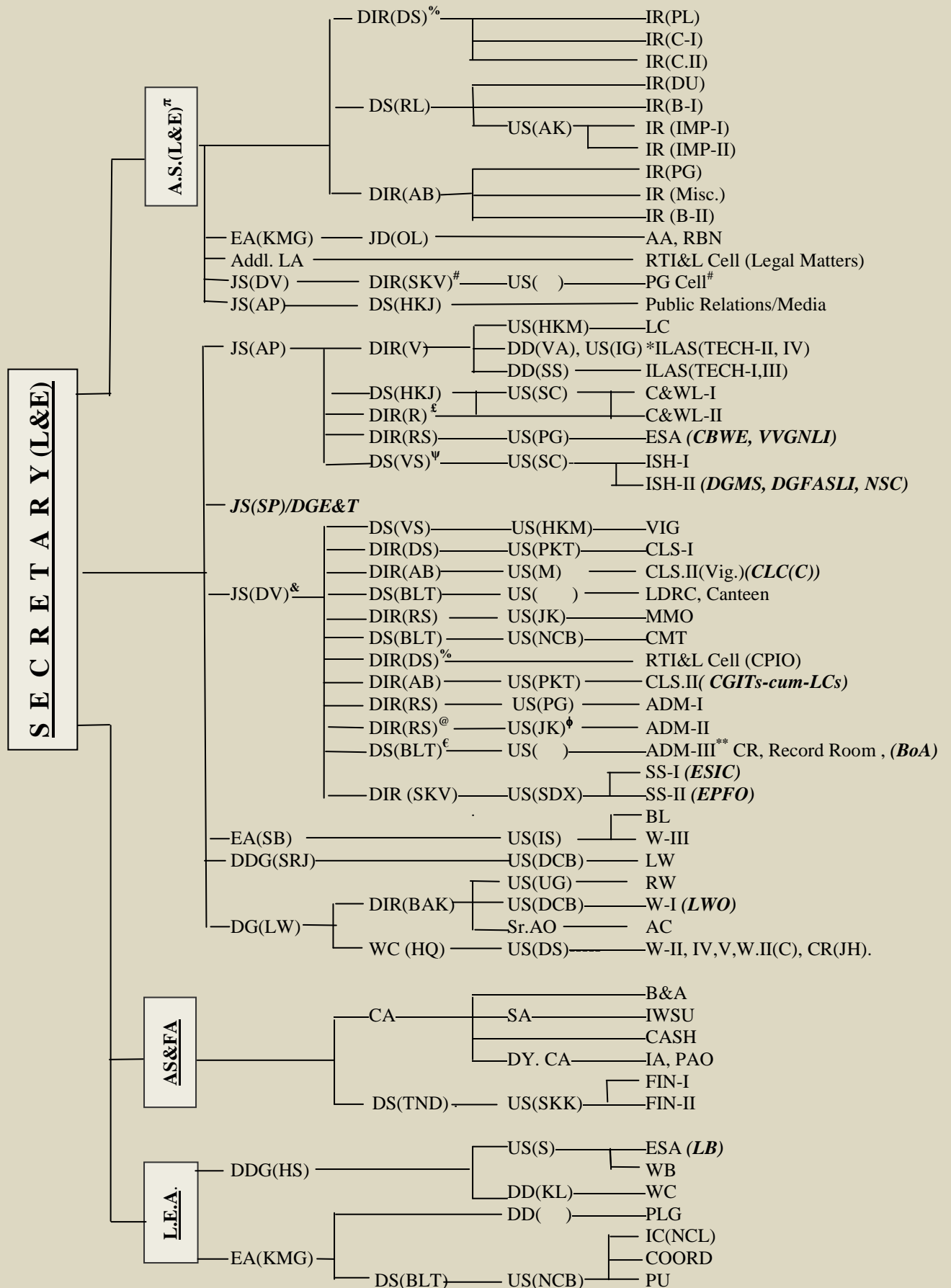


**ORGANISATION CHART OF THE MINISTRY OF LABOUR & EMPLOYMENT**

**(MAIN SECTT.)**

**(AS ON 21.04.2010)**



**NOTE :**

S. No.	Sym- bol	Description
1.	( )	Vacant.
2.	*	ILAS is one single Section. Its bifurcation into TECH (I-V) is only to show the distribution of work of the Section and the channels of submission of files.
3.	#	Shri S.K. Verma, Director is designated as <b>Director, Public Grievances. Public Grievances (PG) Cell</b> is a part of SS-II Section.
4.	@	(a) Shri Ranbir Singh, Director is <b>Head of Department</b> under DFPR, GFR, FR/SR etc. in respect of Ministry (MS). (b) Shri Ranbir Singh, Director is <b>Staff Grievances Officer and Public Grievance Officer</b> for handling the pension and retirement related matters in r/o Ministry (MS).
5.	£	Shri Goutam Roy, Director, has been designated as <b>IT Manager</b> . He is <b>Chief Information Security Officer</b> (for coordinating Indian Portal Project pertaining to Ministry with D/o IT) and looks after <b>IT/NIC matters</b> through Shri A.C. Pandey, Joint Secretary.
6.	€	Shri B.L. Tikania, Deputy Secretary is <b>Liaison Officer</b> in r/o representations of SCs/STs in establishments/services under administrative control of Ministry.
7.	&	(a) Shri S.K. Dev Verman, Joint Secretary is <b>Chief Vigilance Officer</b> in the Ministry of Labour & Employment. (b) Shri S.K. Dev Verman, Joint Secretary is <b>Nodal Officer</b> for ACC Vacancy Monitoring System of Ministry of Labour & Employment. (c) Shri S.K. Dev Verman, Joint Secretary is <b>Chief Record Officer</b> in r/o Ministry of Labour & Employment in pursuance of provisions of Public Records Act, 1993 and Public Records Rules, 1997.
8.	ψ	Ms. Vandana Sharma, Deputy Secretary is looking after the work of <b>Disaster Management</b> with regard to this Ministry through JS/AS looking after the work of ISH Division.
9.	φ	US(Adm.II) is <b>Security Officer and Welfare Officer</b> for staff of the Ministry.
10.	**	SO(Adm.III) is <b>Departmental Record Officer</b> and in-charge of the <b>Record Room</b> of the Ministry of Labour & Employment (MS).
11.	π	(a) Shri S.K. Srivastava, Additional Secretary, is Appellate Authority for Railways under <b>HOER</b> . (b) Shri S.K. Srivastava, Additional Secretary is looking after monitoring of Plan/Non-Plan Expenditure of Ministry. (c) Shri S.K. Srivastava, Additional Secretary is Special invitee to all Statutory or Advisory Boards/ Committees/ Meetings of the Ministry where he is not a Member. (d) Shri S.K. Srivastava, Additional Secretary looks after Organisation of all Regional/Zonal meeting of the Ministry.
12.	%	(a) Shri Devender Singh, Director has been designated as <b>Central Public Information Officer</b> under the <b>Right to Information Act</b> in respect of Public Authority, namely, M/O L&E (HQ). (b) Shri S.K. Dev Verman, Joint Secretary has been designated as <b>Appellate Authority</b> under the R.T.I Act.

**LEGEND**

**Designations in Ministry**

LEA	--	Labour & Employment Adviser
LA	--	Legal Adviser
EA	--	Economic Adviser
JS	--	Joint Secretary
FA	--	Financial Adviser
DGLW	--	Director General Labour Welfare
CLC(C)	--	Chief Labour Commissioner (Central)
DIR	--	Director
DS	--	Deputy Secretary
WC	--	Welfare Commissioner
CA	--	Controller of Accounts
Dy. CA	--	Deputy Controller of Accounts
JD	--	Joint Director
US	--	Under Secretary
DD	--	Deputy Director
SA	--	Senior Analyst
AO	--	Accounts Officer

**Abbreviations used in Names of****Sections/Desks/Units:**

<b>AA</b>	: Anuvad Anubhag
<b>ADM</b>	: Administration
<b>AC</b>	: Audit Cell
<b>B</b>	: Bank
<b>B&amp;A</b>	: Budget & Accounts
<b>BL</b>	: Bonded Labour
<b>C</b>	: Coal
<b>C&amp;WL</b>	: Child & Women Labour
<b>CLS</b>	: Central Labour Service
<b>CMT</b>	: Career Management & Training
<b>COORD</b>	: Coordination
<b>CR</b>	: Central Registry
<b>CR(JH)</b>	: Central Registry (Jaisalmer House)
<b>DU</b>	: Departmental Undertaking
<b>ESA</b>	: Economic & Statistical Analysis
<b>FIN</b>	: Finance
<b>IA</b>	: Internal Audit
<b>IC(NCL)</b>	: Implementation Cell (National Commission on Labour)
<b>ILAS</b>	: International Labour Affairs Section
<b>IMP</b>	: Implementation
<b>IR</b>	: Industrial Relations
<b>ISH</b>	: Industrial Safety and Health
<b>IWSU</b>	: Internal Work Study Unit
<b>LC</b>	: Labour Conference
<b>LDRC</b>	: Labour Documentation & Research Centre
<b>LW</b>	: Labour Welfare
<b>MISC</b>	: Miscellaneous
<b>MMO</b>	: Meeting And Maintenance Officer
<b>OL</b>	: Official Language
<b>PAO</b>	: Pay And Accounts Officer
<b>PG</b>	: Policy General
<b>PL</b>	: Policy Legal
<b>PLG</b>	: Planning Unit
<b>PU</b>	: Parliament Unit
<b>RBN</b>	: Raj Bhasha Niti
<b>RTI&amp;L</b>	: RTI and Legal Cell
<b>RW</b>	: Rural Workers
<b>SS</b>	: Social Security
<b>TECH</b>	: Technical
<b>W</b>	: Welfare
<b>WB</b>	: Wage Board
<b>WC</b>	: Wage Cell
<b>W.II(C)</b>	: Welfare II(Committee)

**Attached/Subordinate & Autonomous Bodies****Attached Offices :**

<b>(DGE&amp;T)</b>	: Directorate General of Employment & Training
<b>(CLC(C))</b>	: Chief Labour Commissioner (Central)
<b>(DGFASLI)</b>	: Directorate General of Factory Advice Service and Labour Institutes
<b>(DGLB)</b>	: Directorate General, Labour Bureau
<b>(DGMS)</b>	: Directorate General of Mines Safety
<b>(LWO)</b>	: Labour Welfare Organisation
<b>(CGITs-cum-LCs)</b>	: Central Government Industrial Tribunal-cum-Labour Courts
<b>(BoA)</b>	: Board of Arbitration

**Subordinate Offices:**

<b>(DGMS)</b>	: Directorate General of Mines Safety
<b>(LWO)</b>	: Labour Welfare Organisation
<b>(CGITs-cum-LCs)</b>	: Central Government Industrial Tribunal-cum-Labour Courts
<b>(BoA)</b>	: Board of Arbitration

**Autonomous Bodies:**

<b>(EPFO)</b>	: Employees' Provident Fund Organisation
<b>(ESIC)</b>	: Employees State Insurance Corporation
<b>(CBWE)</b>	: Central Board For Workers' Education
<b>(VVGNLI)</b>	: V.V. Giri National Labour Institute
<b>(NIMI)</b>	: National Instructional Media Institute
<b>(NSC)</b>	: National Safety Council

\*\*\*\*\*

**NAME OF OFFICERS**

SECRETARY	--	Shri P.C. Chaturvedi
Addl. Secy	--	Shri S.K. Srivastava
AS&FA	--	Shri Chaman Kumar
LEA	--	Dr. Ashok Sahu
DGLW	--	Shri Anil Swarup
JS(AP)	--	Shri Anup Chandra Pandey
JS(SP)/DGE&T	--	Shri Sharda Prasad
JS(DV)	--	Shri S.K. Dev Verman
Addl. LA	--	Shri R.K. Rawat
EA(KMG)	--	Shri K.M. Gupta
EA(SB)	--	Shri Suraj Bhan
DDG(HS)	--	Dr. Harcharan Singh
DDG(SRJ)	--	Shri S.R. Joshi
DIR(DS)	--	Shri Devender Singh
DIR(SKV)	--	Shri S.K. Verma
DIR(RS)	--	Shri Ranbir Singh
DIR(BAK)	--	Shri B.A. Khan
DIR(V)	--	Shri Vikas
DIR(AB)	--	Shri Animesh Bharti
DIR(R)	--	Shri Goutam Roy
CA	--	Shri Arvind Kumar
WC(HQ)	--	Shri B.K. Sanwariya
DS(RL)	--	Shri Raja Lal
DS(VS)	--	Ms. Vandana Sharma
DS(HKJ)	--	Shri Harish Kumar Jethi
DS(BLT)	--	Shri B.L. Tikania
DS(TND)	--	Shri T.N. Dwivedi
JD(OL)	--	Shri Rakesh Kumar Dwivedi
SA	--	Shri D. Bandyopadhyay
US(PG)	--	Shri Pradeep Gaur
US(PKT)	--	Shri P.K. Tamrakar
US(S)	--	Shri Shersha
US(DS)	--	Shri Dinesh Singh
US(JK)	--	Shri Jagdish Kumar
US(SDX)	--	Shri S.D. Xavier
US(DCB)	--	Shri D.C. Bijalwan
US(NCB)	--	Shri N.C. Bhatia
US(SKK)	--	Shri S.K. Kapur
US (HKM)	--	Shri H.K.Mathur
US(IS)	--	Shri Ishwar Singh
US(UG)	--	Ms. Urmila Goswami
US(SC)	--	Shri Subhash Chand
US(M)	--	Smt. Madhu Sham
US(IG)	--	Smt. Indrani Gupta
US(AK)	--	Shri Ashok Kumar
DD(VA)	--	Shri V. Ashok
DD(SS)	--	Ms. Sameera Saurabh R.P. Singh
DD(KL)	--	Shri Kishori Lal
Sr.AO	--	Shri R.P. Sharma

**NAME OF OFFICERS (MAIN SECTT.) (UPTO US LEVEL)**

<b>SECY.</b>	<b>Shri P.C. Chaturvedi</b>		
<b>Addl. Secy</b>	<b>Shri S.K. Srivastava</b>	<b>LEA</b>	<b>Dr. Ashok Sahu</b>
<b>AS&amp;FA</b>	<b>Shri Chaman Kumar</b>	<b>JS(SP)/DGE&amp;T</b>	<b>Shri Sharda Prasad</b>
<b>DGLW</b>	<b>Shri Anil Swarup</b>	<b>JS(AP)</b>	<b>Shri Anup Chandra Pandey</b>
<b>DDG(HS)</b>	<b>Dr. Harcharan Singh</b>	<b>JS(DV)</b>	<b>Shri S.K. Dev Verman</b>
<b>EA(SB)</b>	<b>Shri Suraj Bhan</b>	<b>Addl. L.A.</b>	<b>Shri R.K. Rawat</b>
<b>DDG(SRJ)</b>	<b>Shri S.R. Joshi</b>	<b>E.A. (KMG)</b>	<b>Shri K.M. Gupta</b>
<b>DIR(SKV)</b>	<b>Shri S.K. Verma</b>	<b>DIR(BAK )</b>	<b>Shri B.A. Khan</b>
<b>DIR(RS)</b>	<b>Shri Ranbir Singh</b>	<b>DIR(DS)</b>	<b>Shri Devender Singh</b>
<b>DIR(V)</b>	<b>Shri Vikas</b>	<b>DIR(AB)</b>	<b>Shri Animesh Bharti</b>
<b>DIR(R)</b>	<b>Shri Goutam Roy</b>	<b>CA</b>	<b>Shri Arvind Kumar</b>
<b>WC(HQ)</b>	<b>Shri B.K. Sanwariya</b>	<b>DS(RL)</b>	<b>Shri Raja Lal</b>
<b>DS(VS)</b>	<b>Ms. Vandana Sharma</b>	<b>DS(HKJ)</b>	<b>Shri Harish Kumar Jethi</b>
<b>DS(BLT)</b>	<b>Shri B.L. Tikania</b>	<b>JD(OL)</b>	<b>Shri Rakesh Kumar Dwivedi</b>
<b>DS(TND)</b>	<b>Shri T.N. Dwivedi</b>		
<b>SA</b>	<b>Shri D.Bandyopadhyay</b>	<b>US(PG)</b>	<b>Shri Pradeep Gaur</b>
<b>US(PKT)</b>	<b>Shri P.K. Tamrakar</b>	<b>US(DS)</b>	<b>Shri Dinesh Singh</b>
<b>US(S)</b>	<b>Shri Shersha</b>	<b>US(SC)</b>	<b>Shri Subhash Chandra</b>
<b>US(JK)</b>	<b>Shri Jagdish Kumar</b>	<b>US(SDX)</b>	<b>Shri S.D. Xavier</b>
<b>US(SKK)</b>	<b>Shri S.K. Kapur</b>	<b>US(NCB)</b>	<b>Shri N.C. Bhatia</b>
<b>US (HKM)</b>	<b>Shri H.K.Mathur</b>	<b>US(IS)</b>	<b>Shri Ishwar Singh</b>
<b>US(UG)</b>	<b>Ms. Urmila Goswami</b>	<b>US(M)</b>	<b>Smt. Madhu Sham</b>
<b>US(IG)</b>	<b>Smt. Indrani Gupta</b>	<b>US(DCB)</b>	<b>Shri D.C. Bijalwan</b>
<b>DD(KL)</b>	<b>Shri Kishori Lal</b>	<b>DD(VA)</b>	<b>Shri V. Ashok</b>
<b>DD(SS)</b>	<b>Ms. Sameera Saurabh R.P. Singh</b>	<b>US(AK)</b>	<b>Shri Ashok Kumar</b>

\*\* \*\* \*