

MANUAL OF LABOUR WELFARE ORGANIZATION, NAGPUR REGION

INDEX

4(1)(b)(i)

ORGANISATION , ITS FUNCTIONS AND DUTIES

Pg.3-11

MANUAL 4(1)(b)(ii)

THE POWERS AND DUTIES OF OFFICERS AND EMPLOYEES

Pg.12-15

MANUAL 4(1)(b)(iii)

PROCEDURE FOLLOWED IN THE DECISION MAKING PROCESS,
INCLUDING CHANNELS OF SUPERVISION AND ACCOUNTABILITY

Pg.16

MANUAL 4(1)(b)(iv)

NORMS SET FOR DISCHARGE OF FUNCTIONS UNDER HEALTH
SCHEMES

Pg.17

MANUAL 4(1)(b)(v)

THE RULES, REGULATIONS, INSTRUCTIONS,MANUALS AND
RECORDS

Pg.18-28

MANUAL 4(1)(b)(vi)

STATEMENT OF THE CATEGORIES OF DOCUMENTS THAT ARE HELD
BY IT OR UNDER ITS CONTROL

Pg.29

MANUAL 4(1)(b)(vii)

PARTICULARS OF ARRANGEMENT THAT EXISTS FOR CONSULTATION
WITH, OR REPRESENTATION BY, THE MEMBERS OF THE PUBLIC IN
RELATION TO THE FORMULATION OF ITS POLICY OR
IMPLEMENTATION THEREOF

Pg.30

MANUAL 4(1)(b)(viii)

STATEMENT OF THE BOARDS, COUNCILS, COMMITTEES AND OTHER BODIES CONSISTING OF TWO OR MORE PERSONS CONSTITUTED AS ITS PART OR FOR THE PURPOSE OF ITS ADVICE, AND AS TO WHETHER MEETINGS OF THOSE BOARDS, COUNCILS, COMMITTEES OR OTHER BODIES ARE OPEN TO PUBLIC, OR THE MINUTES OF SUCH MEETINGS ARE ACCESSIBLE FOR PUBLIC

Pg.31-40

MANUAL 4 (1)(b)(ix) & (x)

DIRECTORY OF OFFICERS AND EMPLOYEES & MONTHLY REMUNERATION

MANUAL 4(1)(b)(xi)

BUDGET ALLOCATION
(FUNDS SANCTIONED UNDER BUDGET ESTIMATES 2011-12)

MANUAL 4(1)(b)(xiii)

PARTICULARS OF RECIPIENTS OF CONCESSIONS, PERMITS OR AUTHORISATIONS GRANTED BY IT

MANUAL 4(1)(b)(xiv)

DETAILS IN RESPECT OF THE INFORMATION AVAILABLE TO OR HELD BY THE ORGANISATION REDUCED IN AN ELECTRONIC FORM

MANUAL 4(1)(b)(xvi)

PUBLIC INFORMATION OFFICERS
Organization Central Public Information Officer

MANUAL OF LABOUR WELFARE ORGANIZATION, NAGPUR REGION

4(1)(b)(i) ORGANISATION , ITS FUNCTIONS AND DUTIES

The Labour Welfare Organisation, Nagpur Region was created w.e.f. 23.11.1983 by way of bifurcation from Jabalpur Region with territorial jurisdiction over the States of Maharashtra and Goa and the Union Territories of Daman, Diu, Dadra, Nagar & Haveli. The Welfare & Cess Commissioner heads the region with his headquarters at Nagpur. He is responsible for the implementation of welfare schemes under the following Funds :

- | | | |
|----|---|--------|
| 1. | Beedi Workers Welfare Fund | (BWWF) |
| 2. | Iron Ore/Manganese Ore, Chrome Ore | (IOMC) |
| 3. | Limestone & Dolomite Mines
Labour Welfare Fund | (LSDM) |
| 4. | Cine Workers Welfare Fund | (CWWF) |

He has also been entrusted with the responsibility of collection of cess on the quantities of Iron Ore, Manganese Ore, Chrome Ores and Limestone & Dolomite produced in the mines and also received in the factories as detailed under IOMMC Cess Act & LSDM Cess Act. In respect of the Beedi Workers Welfare Fund, the cess is collected by the Department of Central Excise, Ministry of Finance, Govt. of India and in respect of the Cine Workers Welfare Fund, the cess is collected by the Central Board of Film Certification, Ministry of Information and Broadcasting, Govt. of India. In respect of the Iron Ore, Manganese Ore & Chrome Ore exported outside the country, the cess is collected by the Department of Customs, Ministry of Finance, Govt. of India. No cess is leviable on Limestone exported outside the country.

The existing rates of Cess are given below :

- | | | | |
|-----|--|---|-------------|
| 01. | Per thousand manufactured beedis | - | Rs.5/- |
| 02. | Limestone & Dolomite (per Metric Tonnes) | - | Re.1/- |
| 03. | Iron Ore (Per Metric Tonnes) | - | Re.1/- |
| 04. | Manganese Ore (Per Metric Tonnes) | - | Rs.4/- |
| 05. | Chrome Ore (Per Metric Tonnes) | - | Rs.6/- |
| 06. | Feature Films | | |
| | (a) Hindi & English Films(per film) | - | Rs.20,000/- |
| | (b) All other languages feature films | - | Rs.10,000/- |

One administrative field office viz. the Office of the Deputy Welfare Commissioner is located at Mumbai. The addresses of the Welfare Commissioner & Deputy Welfare Commissioner offices are given below:

1. Office of the Welfare & Cess Commissioner,
Govt. of India, Ministry of Labour & Employment,
Labour Welfare Organisation,
CGO Complex, Block 'C', 2nd Floor, Seminary Hills
NAGPUR – 440 006 (MS)
2. Office of the Deputy Welfare Commissioner,
Govt. of India, Ministry of Labour & Employment
Labour Welfare Organization,
Central Labour Institute Campus
Type-I Qtr. Nos. 9, 10, 11 & 12,
N.S. Mankikar Marg, Sion
MUMBAI – 440 022 (MS)

STRUCTURE AND FUNCTIONS OF LABOUR WELFARE ORGANISATION, NAGPUR

Labour Welfare Organisation, Nagpur Region is headed by the Welfare Commissioner with Head Quarters at Nagpur. He belongs to Grade III of the Central Labour Service. He reports to the Jt. Secretary & Director General (Labour Welfare), Government of India, Ministry of Labour & Employment. The Welfare Commissioner, Nagpur is assisted by one Deputy Welfare Commissioner & two Welfare Administrators besides the other ministerial and non-ministerial staff. Apart from the above, one Administrative-cum-Accounts Officer (AAO) drawn from the Ministry of Finance assists the Welfare Commissioner in discharge of his duties in the field of administration and accounts matters.

The welfare schemes under various Welfare Funds may broadly be classified in the following categories:-

1. Health
2. Housing
3. Water Supply
4. Education
5. Recreation

List of various welfare schemes implemented in Nagpur Region under the above heads are discussed herebelow.

HEALTH SCHEMES

To take care of the medical and health requirements of these beneficiaries, 19 dispensaries are functioning in the State of Maharashtra, whose details given herebelow:

SNo.	Name of Dispensary/Hospital	Name of Fund	State
(1)	(2)	(3)	(4)

STATIC-CUM-MOBILE DISPENSARIES

01.	Gondia (Distt. Gondia)	Beedi Workers Welfare Fund	Maharashtra
02.	Tirora (Distt. Gondia)	----do---	----do---
03.	Amgaon (Distt. Gondia)	----do---	----do---
04.	Bhandara (Distt. Bhandara)	----do---	----do---
05.	Lakhani (Distt. Bhandara)	----do---	----do---
06.	Tumsar (Distt. Bhandara)	----do---	----do---
07.	Khat (Distt. Nagpur)	----do---	----do---
08.	Sinner (Distt. Nashik)	----do---	----do---
09.	Ahmednagar (Distt. Ahmednagar)	----do---	----do---
10.	Sangamner (Distt. Ahmednagar)	----do---	----do---
11.	Sangli (Distt. Sangli)	----do---	----do---
12.	Pune (Distt. Pune)	----do---	----do---
13.	Solapur (Distt. Solapur)	----do---	----do---
14.	Oshiwara, Andheri (Mumbai)	Cine Workers Welfare Fund	----do---

STATIC DISPENSARIES

15.	Jalna (Distt. Jalna)	Beedi Workers Welfare Fund	Maharashtra
16.	Kamptee (Distt. Nagpur)	----do---	----do---

AYURVEDIC DISPENSARIES

17.	Nanded (Distt. Nanded)	----do---	Maharashtra
18.	Brahmapuri (Distt. Chandrapur)	----do---	----do---
19.	Wani (Distt. Yeotmal)	Limestone & Dolomite Mines L.W.Fund	----do---

Each Static-cum-Mobile Dispensary/Static Dispensary is headed by qualified Medical Officer, who is assisted by other para-medical staff. The Static-cum-Mobile dispensary (SCM) has been provided with one mobile medical van and Driver for conducting mobile visits in addition to their normal static duties. The programme for mobile duties is chalked out in consultation with the representatives of beneficiaries. The Medical officer alongwith some para-medical staff visits the said mobile points to provide medical & health care to the beneficiaries residing in and around the said mobile points. The Static dispensary, as the nomenclature indicates, caters to the needs of the beneficiaries at their dispensary only.

Ayurvedic dispensary is headed by a qualified Vaidya, who is assisted by Up-Vaidya and Attendant.

Besides the above, following other welfare schemes are implemented to the beedi/cine/mine workers and their eligible dependant family members :-

- Reservation of beds in T.B. Hospitals
- Supply of artificial limbs (for mine workers only)
- Treatment of workers suffering from Mental diseases (Beedi/Mine)
- Providing spectacles (Beedi/Mine)
- GIA to mine management for purchase of Ambulance vans
- GIA to mine managements for maintenance of standard dispensary services
- GIA to mine managements for purchase of Hospital equipments
- Fatal & Serious Benefit scheme
- Leprosy Relief
- Domiciliary Treatment of beedi/mine workers suffering from T.B.
- Reservation of beds in Public hospitals (mine)
- Maternity benefit scheme to female workers
- Scheme for payment of monetary compensation for sterilization (beedi/cine)
- Financial assistance under Heart scheme
- Financial assistance under Kidney scheme
- Financial assistance under Cancer scheme

Labour Welfare Organisation implements other National Health Care Programmes including Family Welfare, Pulse-Polio, AIDS Awareness, etc. through the available network of hospital/dispensaries maintained under its control.

HOUSING SCHEMES

This Organization is implementing following prototype schemes for beedi/mine workers as per details mentioned against each :-

Name of Housing Scheme	Amount of Subsidy available
<u>FOR MINE WORKERS ONLY</u>	
01.Type-I Housing Scheme	Rs.40000/- or 75% of actual cost of construction, whichever is lower towards subsidy to mine management per tenement
02.Type-II Housing Scheme	Rs.50000/- or 75% of actual cost of construction, whichever is lower towards subsidy to mine management per tenement

HOUSING SCHEME FOR BEEDI WORKERS

Under the Revised Integrated Housing Scheme, 2007, following housing projects (Group Housing) are under progress :-

- (a) 5,100 houses by M/s. Com. Minakshitai Sane Mahila Vidi KSGSM, Solapur for beedi workers at Village Kumbhari (South Solapur), Solapur.
- (b) 3,770 houses by M/s. Maa Saheb Bidi KSGSM, Solapur for beedi workers at Village Kumbhari (South Solapur), Solapur.
- (c) 949 houses (Build Your Own House component) by individual beedi workers in various parts of Maharashtra

EDUCATIONAL SCHEMES

Following schemes are implemented by this Organization :

- Financial assistance for Education under which financial assistance ranging from Rs.250/- to Rs.8,000/-, depending on the last qualifying examination and gender, is paid to the eligible wards of beedi/mine/cine workers studying from Class-I onwards.
- GIA to mine managements for maintenance of Libraries
- GIA to mine managements for purchase of Bus for school going children
- GIA to mine managements for purchase of Furniture/equipments for schools
- Establishment of Central Library-cum-Reading rooms

Following special concessions are provided in the academic field to the beneficiaries :-

1. 15% reservation for Scheduled Caste;
2. 7.5% reservation for Scheduled Tribes and
3. 50% overall reservation for female students.

WATER SUPPLY SCHEMES

(For Mine Managements)

Labour Welfare Organization is implementing following schemes under this head :-

- Financial assistance for Water Supply Schemes
- Sinking of Wells

RECREATIONAL SCHEMES

Labour Welfare Organisation is implementing following welfare schemes for recreation of beedi and mine workers and also for their dependents :-

- Excursion-cum-Study Tours
- Organizing Sports/Games/Social and Cultural activities
- GIA to mine managements for maintenance sports ground/welfare centres
- Establishment of Audio-visual sets/Cinema vans/Exhibition of films
- Supply of T.V. Sets
- Supply of Dish Antenna
- Holiday Home (Puri)

SOCIAL SECURITY SCHEMES

Group Insurance scheme for beedi and cine workers, in the age group of 18 to 60 years not covered under Employees Provident Fund scheme, is also implemented by this Organization under which following benefits are paid :-

- Rs.10,000/- in case of natural death
- Rs.12,500/- in case of partial disablement
- Rs.25,000/- in case of accidental death

MANUAL 4(1)(b)(ii)

THE POWERS AND DUTIES OF OFFICERS AND EMPLOYEES

WELFARE COMMISSIONER:

1. Functions as Head of the Department and is responsible for overall administrative and financial control of the Labour Welfare Organization, Nagpur Region.
2. He is responsible for proper implementation of various Welfare Schemes for Mine/Beedi/Cine workers and their dependents in the administrative jurisdiction of Nagpur Region.
3. He is also performing the statutory functions as laid down under various Welfare Fund Legislations.

DY. WELFARE COMMISSIONER:

- 1) Implementation and supervision of Welfare Schemes & ensuring their proper functioning.
- 2) Financial and administrative functions to the extent such powers have been delegated.
- 3) Inspection of the Welfare Institutions/Dispensaries/Mine Establishments/Metallurgical factories, etc. on the directions of the Head of Department.
- 4) Any other duties assigned by the superior officers.

WELFARE ADMINISTRATOR_ :

- 1) Implementation and supervision of Welfare Schemes & ensuring their proper functioning.
- 2) All matters pertaining to assessment & collection of Cess under the relevant Act & Rules framed there under.
- 3) Survey of Labour under his/her beat to ensure their needs as well as assist them in deriving benefits from various welfare schemes – proper scrutiny and verification of applications received from beneficiaries with a view to ascertaining the deficiency/lapses/genuineness.
- 4) Monitoring the work of the staffs dealing with welfare scheme and provide necessary guidance for their proper functioning.
- 5) Ensuring supervision of periodical Returns/Reports and such other information as asked for in respect of welfare units/institutions.
- 6) Educate the labourer to give up social evil like drinking, adopt small family norms, cleanliness etc.
- 7) Inspection of the Welfare Institutions/ Dispensaries/ Mine Establishments/Metallurgical factories, etc.
- 8) Any other duties assigned by the superior officers.

ADMIN-CUM-ACCOUNTS OFFICER:

1. Functions as Head of Office.
2. Maintenance of the Accounts of the Organization.
3. Preparation of the Budget.
4. Cheque Drawing Officer.
5. Drawing and Disbursing Officer.
6. Reconciliation of expenditure etc.
7. Settlement of Audit Paras and objections.
8. Advice on matters relating to Finance/Accounts.
9. Maintenance of GPF Accounts pertaining to Gr. 'D' employees.
10. Joint Custody of Cash along with the Cashier.
11. Any other duties assigned by the superior officer.

ASSISTANT WELFARE ADMINSTRATOR

1. Implementation and supervision of Welfare Schemes & ensuring their proper functioning.
2. All matters pertaining to collection of Cess under the relevant Act & Rules framed there under.
3. Survey of Labour under his/her beat to ensure their needs as well as assist them in deriving benefits from various welfare schemes – ensuring proper scrutiny of applications received from beneficiaries with a view to ascertaining the deficiency/lapses/genuineness.
4. Ensuring supervision of periodical Returns/Reports and such other information as asked for in respect of welfare units/institutions.
5. Educate the labourer to give up social evil like drinking, adopt small family norms, Cleanliness etc.
6. Inspection of the Welfare Institutions/Dispensaries/Mine Establishments/ Metallurgical factories, etc.
7. Any other duties assigned by the superior officers.

HEAD CLERK-CUM-ACCOUNTANT.

1. Responsible for the work of the section in which posted.
2. Responsible for the correct and upto date of maintenance of accounts both receipt and expenditure including their registers etc.
3. Control over expenditure against sanctioned grant-reconciliation of accounts.
4. Checking of Cash Book.
5. Proper checking of the bills/Cheques to be cashed etc.
6. Settlement of audit paras/objections.
7. Expeditious disposal of the work of the section- checking and submission of periodical returns/reports timely.
8. Recording and weeding of the files timely.
9. Any other duty assigned by the superior officers.

SENIOR CLERK

1. Scrutiny of complicated cases, noting thereon to facilitate the officer to take a decision, and drafting.
2. Guidance to the Junior Clerk in the discharge of their work.
3. Up to date maintenance of various rules/orders/instructions/guard files.

4. Proper maintenance of the files under his charge including records.
5. Any other work allotted to him by the superiors.

JUNIOR CLERK

1. Maintenance of files in the prescribed manner File register- typing work- Despatch and Diary Work – Office records – placing of PUCs, docketing them etc.
2. Noting and drafting of the files of simple nature.
3. Recording and weeding of old files.
4. Any other duty allotted to him by the superiors.

MEDICAL OFFICERS

- 1) Planning, medical supervision and co-ordination.
- 2) Medical consultation/ward work/outdoor patients Department work/ dispensary work including proper functioning of the dispensary/Indoor/Outdoor wards.
- 3) Controlling, maintenance and repairs of the medical vans, if any.
- 4) Custody of medicines/medical equipments/general stores/ maintenance of its account.
- 5) Financial and administrative functions so far as such powers have been delegated.
- 6) Any other duties assigned by the superior officers.

PHARMACIST

- 1) Compounding and dispensing prescriptions according to the hospital/formulary of Prescriptions of doctors.
- 2) Being responsible for initiating the indents, stores and maintenance of stock and accounts of medical supplies and appliances under his charge.
- 3) Providing first aid treatment to the injured and repeat prescription of the physicians when ordered in the absence of the doctors.
- 4) Compiling statistics of hospital dispensary in accordance with instructions, submission of periodical report/returns.
- 5) Attending to work of the clinical side and doing the routine test of urine, stool and blood provided he has undergone adequate training.
- 6) Any other duties assigned by the superior officers.

STAFF NURSE:

1. General care of the patients.
2. Responsible for the complete nursing care of the patients assigned to her.
3. Administration of injections.
4. Assistance in administration of intra venous injections.
5. Preparation of injection and cleaning up.

6. Recording of medicines and injections given.
7. Taking and charting T.P.R.
8. Technical procedures e.g. enema, cauterization dressing, irrigations, oxygen therapy, preparing for and cleaning after procedures.
9. Preparation for and assistance in clinical tests and medical procedures.
10. Preparation of surgical supplies, bandage splints.
11. Routine care and cleaning of dressing trolleys, cup boards, apparatus, mackintosh etc.
12. Care of clean and soiled linen.
13. Disinfection of linen, beds, floor and bed pans.
14. Any other duty assigned by the superior officers.

SWEEPER

1. Will clear wards, floors, strikes, lavatories and toilet seats, windows, walls and other area in the ward/hospital/dispensary/welfare institutions/office and their ancillary rooms and keep the hospital/dispensary/welfare institutions/office grounds clean and free from stray dogs, cats, pigs etc.
2. Will clean urine/pots/beds pans and other soiled or contaminated appliances.
3. Will provide bed pans and urine pots to the patients with promptness and prepare patients for operations and diagnostic tests.
4. Will assist in collection and handing urine and stool specimen.
5. Will transport dead bodies to the mortuary and dispose of specimen and organs removed during operations.
6. Will assist in disinfections of soiled linens, mattresses and terminal disinfections of the ward and conveyance of soiled linens to the laundry.
7. Will attend to such other duty allotted to him by the superior officers.

CHOWKIDAR

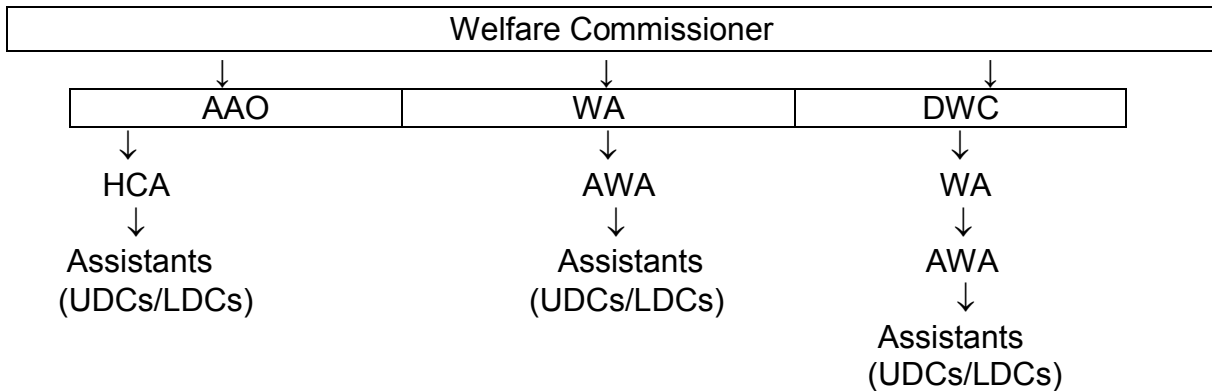
1. Will be on duty punctually at the approved area. He will be alert throughout the period of duty and perform the duties diligently and with vigilance.
2. Will be responsible for scrutiny of the building equipments and patients.
3. Will check that all doors and windows which have to be kept locked during the nonworking hours of the hospital/dispensary/welfare institutions/office (s) are securely locked.
4. Will check daily and see that the fire fighting equipment is kept in good working conditions and take immediate steps in fire fighting in case there is an incident of fire.
5. Will round the area to see that no authorized persons are in the premises and prevent unauthorized movement of personnel equipment and supplies.
6. Will report immediately to higher authorities of unusual occurrence.
7. Will remain on duty till relieved.
8. Will perform duty as may be allotted to him by the superior officers.

MANUAL 4(1)(b)(iii)

**PROCEDURE FOLLOWED IN THE DECISION MAKING PROCESS,
INCLUDING CHANNELS OF SUPERVISION AND ACCOUNTABILITY**

Procedures prescribed by the headquarters (Labour Welfare Division, Ministry of Labour & Employment) in the welfare schemes are followed. Powers have been delegated at various levels as per functional needs.

Channel of supervision and accountability



**MANUAL 4(1)(b)(iv)
NORMS SET FOR DISCHARGE OF FUNCTIONS UNDER HEALTH SCHEMES**

Sl.	Name of Scheme	Time taken by	Time taken for
-----	----------------	---------------	----------------

No.		Medical Officer/Field Offices to forward the application	setting of claims by Office of the Welfare Commissioner
01	CANCER/HEART/KIDNEY/ MINOR DISEASES LIKE HERNIA, APPENDECTOMY, ULCER, GYNAECOLOGICAL AND PROSTRATE DISEASES	10 DAYS from the date of receipt of application/claim	Within 30 days from the date of receipt from the dispensaries/field offices subject to availability of funds
02	SPECTACLES / DOMICILLIARY TREATMENT OF TB / MONETARY COMPENSATION FOR STERILISATION	10 DAYS from the date of receipt of application/claim	Within 30 days from the date of receipt from the dispensaries/field offices subject to availability of funds
03	MATERNITY BENEFIT	10 DAYS from the date of receipt of application/claim	Within 30 days from the date of receipt from the dispensaries/field offices subject to availability of funds
04	GROUP INSURANCE SCHEME	10 DAYS from the date of receipt of application/claim	Within 30 days from the date of receipt from the dispensaries/field offices subject to availability of funds

MANUAL 4(1)(b)(V)
THE RULES, REGULATIONS, INSTRUCTIONS, MANUALS AND RECORDS

1. Limestone & Dolomite Mines Labour Welfare Fund Rules 1973.

2. Iron Ore, Manganese Ore, Chrome Ore Mines Labour Welfare Fund Rules 1978.
3. Beedi Workers Welfare Fund Rules 1978
4. Cine Workers Welfare Fund Rules 1984.

WELFARE SCHEMES

HEALTH SCHEMES

1 Free Medical Treatment

Free Medical Care is extended to the Beedi / Mine and Cine workers through the Ayurvedic, Static and Static-cum-Mobile Dispensaries run by the Labour Welfare Organization.

2 Reimbursement of entire expenditure for treatment of Cancer: (Scheme was introduced on 01-12-1984)

CANCER TREATMENT:

- a) Reimbursement of full expenditure ** for the (for workers & dependents - treatment taken in Govt. hospital /govt. 6 months continuous service is recognized hospitals essential)
- b) Subsistence allowance shall be paid @ Rs.600-750 per month.
Conveyance charges will be reimbursed from residence to hospital and back.

3 Reimbursement of expenses for treatment of heart diseases: (Scheme was introduced on 18-09-1984)

HEART DISEASES:

- a) Reimbursement of expenditure upto Rs.1.3 Lakhs ** (for workers & dependants for the treatment taken in Government hospital/ Government recognized hospitals (3 years continuous service is essential)
- b) Subsistence allowance shall be paid @ Rs.750-1000/- per month.
Conveyance charges will also be reimbursed from residence to hospital & back.

4 Reimbursement of expenses for treatment of Kidney Transplantation etc (Scheme was introduced on 10-02-1992)

KIDNEY TRANSPLANTATION:

- a) Reimbursement of expenditure upto - Rs.2 lakh ** (for workers & dependants) for the treatment taken in Government hospital/ Government recognized hospitals (3 years continuous service is essential)
- b) Subsistence allowance shall be paid @ Rs.750-1000/- per month. Conveyance charges will also be reimbursed from residence to hospital & back.

** The Welfare Commissioner of the region has powers to sanction reimbursement upto Rs.2,00,000/-in each case. And beyond Rs.2,00,000/ in each case, the approval of the office of the DG (LW), New Delhi is required

**5 Financial Assistance for minor diseases like Hernia, Appendectomy, Ulcer, Gynecological diseases and prostrate diseases:
(Scheme was introduced on 13-12-2003)**

Minor Diseases like Hernia, appendectomy, Ulcer, Gynecological diseases, Prostrate diseases

Only for workers

Reimbursement of expenditure upto Rs.30,000/- for the treatment taken in Govt. hospital /Govt. recognized hospitals - 3 years continuous service

For availing the benefits of the above schemes, the worker has to take prior permission of /inform the Welfare Commissioner for taking treatment in Govt.Hospital or Govt. recognized Hospitals in the prescribed form through the nearest Medical Officer of LWO dispensary and the claims have to be submitted in the prescribed form.

**6 Financial assistance for purchase of Spectacles:
(Scheme was introduced on 14-09-1984)**

PURCHASE OF SPECTACLES (for workers only) :

- a) Reimbursement of expenditure upto Rs.150/- for purchase of spectacles.
- b) Reimbursement of expenditure upto Rs.70/- for change of lens.

The worker has to procure the spectacle and send the original receipt alongwith the application to the Welfare Commissioner.

**7 Maternity Benefit Scheme for Female Workers:
(Scheme was introduced in 1988)**

MATERNITY BENEFIT (for Female workers only)

- a) Financial Assistance of Rs.1000/- will be given for the first two deliveries.
- b) 6 months continuous service is essential
- c) The female worker shall submit the claim of Maternity benefit after delivery alongwith birth certificate in the prescribed format.

**8 Monetary Compensation for Sterilization:
(Scheme was introduced on 29-071988)**

MONETARY COMPENSATION FOR STERILISATION (for worker & his or her spouse)

- a) Rs.200/- will be paid if the worker or his/her spouse undergoes Sterilization having two or less living children.
- b) 6 months continuous service is essential

The worker has to submit the claim in the prescribed format.

**9 Reservation of Beds in TB Hospital/ Sanatoria and Domiciliary treatment of TB:
(Scheme was introduced on 12-04-1978 & 06-08-1985)**

TREATMENT FOR T.B (for workers & dependents) :

- a) Free treatment in T.B.Hospital
- b) Rs.50/- per month for purchase of medicines
- c) 6 months continuous service is essential
- d) Subsistence allowance shall be paid @ Rs.750-- to workers only
Worker has to avail treatment at the recognized TB Hospitals and submit the claims in the prescribed format. Subsistence allowance will be paid for the period of non payment of wages to the worker.

**10 Providing treatment for mental diseases
(Scheme was introduced on 28-09-1987)**

MENTAL DISEASES (For workers & dependants)

- a) Monthly expenditure of Rs.180 - Rs.900/- per patient per month is paid to the mental hospital
- b) 6 months continuous service is essential

- c) Subsistence Allowance shall be paid @ Rs.600/- to Rs.750/- per month

**11 Providing treatment for leprosy for workers.
(Scheme was introduced on 26-08-1986)**

LEPROSY RELIEF (For workers & dependants)

- a) Subsistence Allowance shall be paid @ Rs.200/- to Rs. 300/- per month
b) 6 months continuous service

12. Scheme for providing financial assistance to widow/widower of Beedi / Mine / Cine workers as well as widow/widower Beedi / Mine / Cine workers for meeting wedding expenses of their daughter

- Rs. 5000/- in each occasion for marriage of 1st two daughters.

13. Scheme for Grant-in-aid to State Govt / ESIC / Beedi Workers Group Housing Co-op. Society / NGOs / Control of State Govt. Recognized Hospital /s etc. for providing medical facilities to Beedi Workers.

- Upto Rs.2.0 crores or 75% of the actual cost of construction including cost of Medical equipments.
- Rs.4.0 lakh or 75% of the actual cost of Ambulance / Mobile Van whichever is less.
- Rs.10.00 lakh per annum or 75% of the actual cost, towards supply of medicines to a minimum of 15-bedded hospital maintained by above Organisation.
- The said institutions are eligible for grant in aid if they intend to expand the existing infrastructure or to provide both indoor and outdoor medical facilities to the Beedi workers.
- Recurring expenses including payment of salary to the Medical /Para medical /Ministerial staff has to be borne by the respective institution.

14 Grant in aid to mine management for maintenance of standard dispensary services:

Applicability Any Mine management which maintains Standard Dispensary/Hospital .
Benefits Grant in aid is payable @10 paise per Metric tonne of Iron Ore/Manganese Ore/Chrome Ore produced and @ 40 paise per metric tonne of Limestone &

Dolomite produced or 75% of the expenditure on Medicines and establishments charges, whichever is less.

15. Financial assistance to mine workers involved in serious accident (Fatal & Serious Accident Benefit Scheme)

Applicability	Any mine worker who meets with fatal accident or is totally /permanently incapacitated in mine accident.
Benefits	A lump sum grant of Rs.10,000/- . An amount of Rs. 1000/- per month for a maximum maximum period of five years. A monthly scholarship of Rs. 250/- to each of the school going child till the age of 21 years or his her marriage whichever is earlier (The children availing this will not be eligible for scholarship under Financial assistance for Education.)

16. Financial assistance to mine workers for artificial limbs

Applicability	Any mine worker who lose his/her limb while on duty
Benefits	The worker is entitled for supply of artificial limb from any of the recognized /approved centers of Government of India. The total expenditure including the cost of limbs and traveling expenses to the center is borne by Labour Welfare Organisation.

17. Financial assistance towards Funeral Expenses (Scheme was introduced w.e.f. 10.03.2006)

Applicability	Any Beedi/Cine/Mine Worker, who has completed 6 months of service
Benefits	Rs.1,500/- in cash to the family members of the deceased beedi/cine/mine worker.

EDUCATIONAL SCHEMES

FINANCIAL ASSISTANCE FOR EDUCATION

1. Financial Assistance for providing Scholarship to the wards of Beedi Workers.

Under the Education Scheme financial assistance is provided to the school going children of workers studying from Class 1 to professional courses ranging from Rs.250/- to Rs.8000/- per annum as per details given hereunder :-

	BOYS	GIRLS
1. Class 1 to IV	250/-	250/-
2. Class V to VIII Std.....	500/-	940/-
3. Class IX Std.....	700/-	1,140/-
4. Class X.....	1,400/-	1,840/-
5. Class XI, XII/PUC I & II.....	2,000/-	2,440/-
6. 3yrs diploma/Graduation/PG.....	3,000/-	3,000/-
7. Professional degree..... BE/MBBS/BSc. (Agri.)	8,000/-	8,000/-

The benefits under the above scheme are disbursed directly to the beneficiaries through NEFT system.

2. Financial assistance for purchase of vehicle for school going children

Applicability	Mine management (Lime Stone & Dolomite Mine & Iron/Manganese/Chrome ore mine)
Eligibility	Minimum children (studying in school/college or other institutions) to be benefited should not be less than 50 for a normal bus and 30 for mini bus.
Benefits	Financial assistance limited to 75% of the actual or Rs.5 lakh for normal bus/3 lakh for a mini bus.

3. Grant in aid for libraries for mine workers

Applicability	Mine managements
Eligibility	Managements should run libraries for the benefit of minimum 100 workers.
Benefits	Grant-in-aid of maximum of Rs. 5,000/- per annum.

HOUSING SCHEMES

Type I housing scheme for mine workers

Applicability	Mine workers employed in the Iron Ore/Manganese ore/Mica/Chrome Ore/Limestone & Dolomite mining industry. The land to be provided by the Mine management at mine site.
Eligibility	The life of the Mine should not be less than 15 years. The management must be employing regular mine workers and having residential provision for contract workers more than the houses applied for.
Benefits	A subsidy of Rs.40,000/- or 75% of the actual cost whichever is less will be given to the Mine management who will construct the house.

Type II housing scheme for mine workers

Applicability	Mine workers employed in the Iron Ore/Manganese Ore/Mica/Chrome Ore /Limestone and Dolomite mining Industry. The land to be provided by the Mine management at the mine site.
Eligibility	The life of the mine should not be less than 15 years. The management must be employing regular mine workers and having residential provision for contract workers more than the houses applied for.
Benefits	A subsidy of Rs.50,000/- or 75% of actual cost whichever is less is given to the management who will construct the house.

2. Grant-in-aid to registered Co-op. Societies of Beedi Workers with 75 or more members for Construction of Work shed & Godown:

- Minimum area of the work shed and Godown should not be less than 750 sq.ft. and 600 sq. ft respectively with a minimum life of 20 years.
- Subsidy of maximum of Rs.1.50 lakhs or 75% of actual cost of construction after completion of construction.
- Amount is released after inspection by the officers nominated by Welfare Commissioner.

- A) Beedi and Cine Workers in the age group of 18-60 years and who are not subscribers of Employees Provident Fund scheme are covered under the Group Insurance Scheme.
- B) The benefits under the scheme are as under.

Natural Death	Rs.10,000/-
Accidental Death	Rs.25,000/-
Partial Disability	Rs.12,500/- Not applicable for Cine Workers
Total Disability	Rs.25,000/-

WATER SUPPLY SCHEME (For Mine Managements)

Applicability	Mine managements
Eligibility	In area of concentration of mine workers houses.
Benefits	75 % of the actual cost of the scheme providing water supply to the mine workers.

RECREATIONAL SCHEMES

Supply of TV sets

Applicability	Mine and Beedi Workers
Eligibility	Mine managements and Beedi Workers Co-operative Societies
Benefits	Rs.10,000/- for colour TV set and Rs.4000/- for B&W TV Set.

Grant in aid for Purchase of Dish Antenna

Applicability	Mine Managements
Eligibility	Mine managements who provide housing facilities to their workers and where such houses form a colony of at least 100 houses.
Benefits	Payment limited to 50% of the actual cost of the dish antenna including all the accessories or Rs.30,000/- whichever is less.

Organising sports/Games, Social & Cultural activities

Applicability	Mine and Beedi workers
Eligibility	<ol style="list-style-type: none">Each mine management with a group of mines under their control will be eligible for reimbursement of expenditure.Beedi managements or social and cultural Organisation of repute.Prior approval of the competent authority is required to be obtained.
Benefits	<p>(A) <u>For mine managements</u></p> <ol style="list-style-type: none">For purchase of sports gear : 75% of the actual expenditure subject to a limit of Rs.10000/- in a financial year.For Sports/Games/Tournaments activity : 75% of the actual expenditure subject to limit of Rs.10000/- in a financial year .For social activities : Expenditure limited to Rs.3,000/- or 50% of the actual expenditure, whichever is lessFor cultural activities : Expenditure limited to Rs.7,000/- or 50% of the actual expenditure, whichever is less <p>(B) <u>For Beedi Managements</u> - 50% of the actual cost of the event subject to a maximum of Rs.2000/- per event.</p>

Grant in aid for Sports Ground

Applicability	Mine workers only.
Eligibility	-The grant-in-aid will be admissible only for provision of Sports Ground where the concentration of workers is not less than 250. - Detailed estimate with site plan indicating the place where the sports ground is proposed to be located should be furnished alongwith application.
Benefits	Financial assistance will be a grant-in-aid payable subject to a maximum of Rs.3000/- on matching basis.

Excursion cum Study Tour

Applicability Mine Workers

Eligibility	<ol style="list-style-type: none"> 1) All permanent and temporary workers. 2) His/her name should be in the Form 'B' register and has put in continuous service of at least two years. 3) He should possess a valid Identity Card on the date of tour. 4) The period of tour and total distance to and from should not exceed ten days and 3000 Km respectively. 5) The number of workers in one trip should not be less than 10 and not more than 50 in any case. 6) To obtain prior approval of Welfare Commissioner before the tour is undertaken.
--------------------	---

Benefits	Grant-in-Aid payable on matching basis subject to a maximum of Rs.20000/-per tour.
-----------------	--

Motor Vehicle for Transportation of Mine workers (except Mica Fund)

Applicability Mine Workers

Eligibility	<ol style="list-style-type: none"> 1) The number of mine workers to be benefited should not be less than 75 in case of a normal bus and 40 in case of mini bus. 2) Assistance will be paid to the mine managements.
--------------------	---

Benefits Financial assistance will be as follows:

- a) Normal bus - 75% of the actual cost or Rs.5 lakh whichever is less.
- b) Mini Bus - 75% of the actual cost or Rs.3 lakh- whichever is less.

SIGHT SEETING & HOLIDAY HOME FACILITIES FOR BEEDI WORKERS

**Applicability
Eligibility:**

Beedi Workers.

1. Beedi workers with six months of employment are entitled.
2. To and fro 2nd class railway fare, local conveyance and sight seeing @ Rs.3/- per day for 3 days admissible.
3. Reimbursement of expenditure is made after certificate of Caretaker of the Holiday Home.

Grant in aid for setting up of community centers for benefit of beedi workers

- a) Benefit is available for setting up of Community Centre in beedi Workers Housing Colony having minimum 50 houses.
- b) The State Government should submit the plan and estimate for construction of Community Hall duly approved by competent authorities.
- c) The minimum covered area not less than 50 sq. meters with a life of more than 20 years.
- d) An amount of Rs.1.00 lakh is released on completion of construction after inspection by the Officers of Labour Welfare Organisation.

MANUAL 4(1)(b)(vi)

**STATEMENT OF THE CATEGORIES OF DOCUMENTS THAT ARE HELD BY
IT OR UNDER ITS CONTROL**

Documents pertaining to the implementation of the schemes are held by the Labour Welfare Organisation.

MANUAL 4 (1)(b)(vii)

PARTICULARS OF ARRANGEMENT THAT EXISTS FOR CONSULTATION WITH, OR REPRESENTATION BY, THE MEMBERS OF THE PUBLIC IN RELATION TO THE FORMULATION OF ITS POLICY OR IMPLEMENTATION THEREOF

The policies are formulated considering the recommendations of the Central Advisory Committees under different funds and the State Advisory Committees recommends the implementation part thereof.

MANUAL 4(1)(b)(viii)

STATEMENT OF THE BOARDS, COUNCILS, COMMITTEES AND OTHER BODIES CONSISTING OF TWO OR MORE PERSONS CONSISTED AS ITS PART OR FOR THE PURPOSE OF ITS ADVICE, AND AS TO WHETHER MEETINGS OF THOSE BOARDS, COUNCILS, COMMITTEES OR OTHER BODIES ARE OPEN TO PUBLIC, OR THE MINUTES OF SUCH MEETINGS ARE ACCESSIBLE FOR PUBLIC

Notifications pertaining to the constitution of State Advisory Committees under different Labour Welfare Funds in Nagpur Region:

**MINISTRY OF LABOUR AND EMPLOYMENT
NOTIFICATION**

NEW DELHI, THE 10TH APRIL, 2006

S.O.522(E)- In exercise of the powers conferred by Section 5 of the **Iron Ore Mines, Manganese Ore Mines and Chrome Ore Mines Labour Welfare Fund Act, 1976** (61 of 1976) read with sub-rule (2) of rule 3, sub-rule (1)(a) and (2) of rule 4 and rule 16 of the **Iron Ore Mines, Manganese Ore Mines and Chrome Ore Mines Labour Welfare Fund Act, 1978**, the Central Government hereby constitutes an Advisory Committee and appoints the following persons to the said Committee for the **State of Goa** to advise the Central Government on the matters arising out of the administration of the aforesaid Act, including matters relating to the application of the **Iron Ore Mines, Manganese Ore Mines and Chrome Ore Mines Labour Welfare Fund**, for a period of three years from the date of publication of this notification in the Official Gazette, namely :-

- | | | | |
|-----|---|---|---|
| (1) | Minister for Labour,
Government of Goa,
Secretariat, Porvorim-Goa. | - | Chairman |
| (2) | Welfare Commissioner,
Government of India,
Nagpur. | - | Vice-Chairman
(Ex-officio) |
| (3) | Regional Labour Commissioner
(Central)
Mumbai. | - | Member
(Ex-officio) |
| (4) | Director,
Mines Safety,
Directorate of Mines Safety,
Goa Region, Margaon, Goa. | - | Member
(Ex-officio)

C/Govt Representative |
| (5) | Shri Alexio Sequeira,
M.L.A.(Loutolim),
Near Raicho Ambo,
Rua Salcete, Goa. | - | Member of the Legislative
Assembly |

Representative of Employers' :

- (6) Shri Shivanand Salgaonkar,
M/s.V.M. Salgaonkar and Bros.,
Vasco-da-Gama, Goa.
- (7) Shri Vijay Chowgule,
M/s.Chowgule and Company Ltd.,
Chowgule House,
Marmagao, Goa.
- (8) Shri Shrinivas Dempo,
M/s.Dempo Group of Companies,
Campal, Panaji, Goa.

Representative of Employees' :

- (9) Shri Christopher Fonseca,
Secretary, (AITUC)
Goa, Mining Labour Welfare Union,
Velho's Building, 2nd Floor,
Panaji, Goa.
- (10) Shri P. Gaonkar (B.M.S.),
General Secretary,
Gomantak Mazdoor Sangh,
Kamakshi Krupa, Khadpabandh,
Ponda, Goa.
- (11) Dr.(Mrs.) Luiza Pereira,
Secretary, (CITU),
All Goa, General Employer's Union,
Post Box No. 90,
Vasco-da-Gama, Goa.
- (12) Assistant Welfare Commissioner, _ Secretary
Labour Welfare Organisation,
Goa.

2. The headquarters of the said Advisory Committee shall be at Goa.

[No.U.19012/7/2005-W.II(C)]

Sd/-

(Manohar Lal)

Director General (Labour Welfare) /
Joint Secretary to the Government of India

MINISTRY OF LABOUR
NOTIFICATION
NEW DELHI, THE 10TH DECEMBER, 1992

S.O. In exercise of the powers conferred by Section 5 of the **Iron Ore Mines, Manganese Ore Mines and Chrome Ore Mines Labour Welfare Fund Act, 1976** (61 of 1976) read with sub-rule (2) of rule 3 of the Iron Ore Mines, Manganese Ore Mines and Chrome Ore Mines Labour Welfare Fund Act, 1978, the Central Government hereby constitutes an Advisory Committee for the **State of Maharashtra** of the following members :-

- | | | | |
|-----|---|---|-----------------------------------|
| (1) | Labour Minister,
Government of Maharashtra,
Bombay. | - | Chairman |
| (2) | Welfare Commissioner,
Labour Welfare Organisation,
Nagpur. | - | Vice-Chairman |
| (3) | Regional Labour Commissioner
(Central)
Nagpur | - | Member
(Ex-officio) |
| (4) | Deputy Director General
Directorate General
of Mines Safety, Nagpur | - | Member
(Ex-officio) |
| (5) | Shri Ashok Dhawad,
Member of Legislative Assembly
Bombay. | - | Member of Legislative
Assembly |

Representative of Employers' :

- | | | | |
|-----|---|--|--|
| (6) | Shri M.K. Venugopal,
Manager Personnel,
ManganeseOre (India) Ltd.,
Nagpur. | | |
| (7) | Shri C.H. Khisty,
General Manager (P&A),
Mineral Exploration Corporation Ltd.,
Nagpur. | | |
| (8) | Shri R.K. Sharma,
Chief Personnel Manager,
Manikgarh Cement
P.O.Gadchandur-449 908,
District-Chandrapur(MS) | | |

Representative of Employers' :

- (9) Shri R.M. Nirmal,
General Secretary,
Chandrapur Zilla Kamgar Sangh,
Gadchandur,
District-Chandrapur
- (8) Shri R.M. Gedam,
General Secretary,
Vidarbha Stone Mines Workers Union,
Cement Nagar,
District-Chandrapur.

Woman Representative

- (9) Prof.(Smt.) Neela R. Mankeshwar,
Ramdaspath Extension,
Nagpur-440 010.

2. Welfare Administrator, Ministry of Labour, Government of India, Nagpur, shall be the Secretary of the Committee.

[No.U.19012/3/86-W.II(C)]
Sd/-
(V.D. Nagar)
Under Secretary.

MINISTRY OF LABOUR
NOTIFICATION
NEW DELHI, THE 15TH JUNE, 1989

S.O. In exercise of the powers conferred by Section 6 of the **Limestone and Dolomite Mines Labour Welfare Fund Act, 1972 (62 of 1972)** read with sub-rule (2) of rule 3 of the Limestone and Dolomite Mines Labour Welfare Fund Act, 1973, the Central Government hereby constitutes an Advisory Committee and appoints the following persons to the said Committee for the **State of Maharashtra** consisting of the following members, namely :-

- | | | | |
|-----|--|---|------------------------|
| (1) | Minister of State for Labour,
Government of Maharashtra | - | Chairman |
| (2) | Welfare Commissioner,
Nagpur. | - | Vice-Chairman |
| (3) | Regional Labour Commissioner
(Central)
Mumbai. | - | Member
(Ex-officio) |
| (4) | Smt. Rajkumari Gopalnarayan Bajpai
M.L.A. | - | Member |

Representative of Employers' :

- | | | | |
|-----|---|--|--|
| (5) | Shri B.S. Verdia
General Secretary,
Manikgarh Cement Factory,
Gadchandur,
District-Chandrapur | | |
| (6) | Shri M.L. Gupta,
General Manager,
Chanda Cement Works,
District-Chandrapur | | |

Representative of Employees' :

- | | | | |
|-----|--|--|--|
| (7) | Shri R.M. Nirmal,
General Secretary,
Chandrapur Zilla Kamgar Sangh,
Gadchandur,
District-Chandrapur | | |
| (8) | Shri R.M. Gedam,
General Secretary,
Vidarbha Stone Mines Workers Union,
Cement Nagar,
District-Chandrapur. | | |

Woman Representative

- (9) Prof.(Smt.)Neela R. Mankeshwar,
Ramdaspath Extension,
Nagpur-440 010.

2. Welfare Administrator, Ministry of Labour, Government of India, Nagpur,
shall be the Secretary of the Committee.

[No.U.19012/3/86-W.II(C)]

Sd/-

(V.D. Nagar)

Under Secretary.

MINISTRY OF LABOUR

NOTIFICATION

New Delhi, the 24th June, 1999

S.O.484(E)-- In exercise of the powers conferred by section 5 of the **Beedi Workers Welfare Fund Act, 1976** (62 of 1976) read with sub-rule (2) of the rule 3, rules 4 and rule 16 of the Beedi Workers Welfare Fund Rules, 1978, the Central Government hereby constitute the Advisory Committee for the **State of Maharashtra** consisting of the following members namely :-

- | | | | |
|----|--|---|---------------------------------------|
| 1. | Minister for Labour
Government of Maharashtra
Mumbai | - | Chairman |
| 2. | Welfare Commissioner
Nagpur | - | Vice Chairman
(Ex-Officio) |
| 3. | Commissioner of Labour
Mumbai | - | Member
(Ex-officio) |
| 4. | Shri Uttam Prakash Baburao
Khandare, 71, Shikshak Housing
South Sadar Bazar, Solapur
Dist-Solapur | - | Member of the Legislative
Assembly |

Employers' Representatives :

5. Shri Subhash Anantram Jain
Secretary,
The Beedi Leaves & Tobacco
Merchants' Association, Gondia,
District-Bhandara.
6. Shri Sudhir Shankar Sabale
Sabale Waghire and Co. Ltd.,
105, Bhavani Peth,
Pune-411 042.

Employees' Representatives:

7. Advocate Kum. Sulekhatai Kumbhare
President,
Maharashtra Rajya Beedi Mazdoor Sangh,
Hardasnagar, Kamptee
District Nagpur.

8. Shri S.S. Paranjape,
185, Shaniwar Peth,
Pune - 411 030.
9. Welfare Administrator - Secretary
Nagpur
2. The headquarters of the said Advisory Committee shall be at Nagpur.

[No.U-19012/02/94-W.II(C)]
Sd/-
S.K. Das,
Director General (Labour Welfare)/ Jt. Secy.

MINISTRY OF LABOUR

NOTIFICATION

New Delhi, the 27th January, 2004

S.O.122(E)-- In exercise of the powers conferred by section 5 of the **Cine Workers Welfare Fund Act, 1981** (33 of 1981) read with sub-rule (2) of the rule 3, sub-rule (1) of rule 4 and rule 16 of the Cine Workers Welfare Fund Rules, 1984, the Central Government hereby constitute the Advisory Committee for the **State of Maharashtra** to advise the Central Government on the matters arising out of the administration of the aforesaid Act, as may be referred to it by the Central Government including matters relating to the application of the Cine Workers Welfare Fund, for a period of three years from the date of publication of this notification in the Official Gazette, namely :-

1. Ms. Smita Thackeray, - Chairman
25, Matoshree, Kalanagar,
Bandra (E),
Mumbai - 400 051.
2. Welfare Commissioner - Vice Chairman
Government of India (Ex-Officio)
Nagpur.

Representative of the Central Government appointed under rule 3(2)(iii)

3. Deputy General Manager - Member
National Film Development (Ex-officio)
Corporation, Mumbai

Representatives of State Government appointed under rule 3(2)(iv)

4. Labour Commissioner - Member
Government of Maharashtra (Ex-Officio)
Commerce Centre, Tardeo,
Mumbai

Representative of Producers appointed under rule 3(2)(v)

5. Shri Charudatta N. Sarpotdar - Member
Akhil Bhartiya Marathi Chitrapat Mahamandal,
Poona Guest House, Lakshmi Road,
Pune - 411001.

6. Shri Rafique Ahemad Rasik Ansari, - Member
New Film Star of Film Industry Association,
Attarwala Chawl, Room No.213-B,
Behind Rose Bakery, Mori Road,
Mahim (W), Mumbai-400 016.
7. Smt. Ushakiran P. Chavan, - Member
All India Film Corporation,
Shantideep, Bahar Housing Society,
Opposite Sheelavihar, Vasant Takadi,
Ahemadnagar-414001.

Representatives of Cine Workers appointed under rule 3(2)(vi)

8. Shri Madhukar B. Patil, - Member
Marathi Film Workers Union,
437, A ward, Shivaji Peth,
Kolhapur.
9. Shri Satish B. Bidkar - Member
All India Marathi Film Corporation,
123-D, Datta Maharaj Lane,
Papachi Tikti, Kolhapur.
10. Shri Pandit Raj Joshi - Member
The Film Writers Association,
Satyam, 7-A/380, New D.N. Nagar,
Andheri (W), Mumbai-400 053.

Secretary appointed under rule 3(2)(b)

11. Welfare Administrator, - Secretary
Labour Welfare Organisation,
Nagpur.

2. The headquarters of the said Advisory Committee shall be at Mumbai.

[No.U-19012/3/2002-W.II(C)]

Sd/-

Manohar Lal,
Director General (Labour Welfare)/ Jt. Secy.

MANUAL 4 (1)(b)(ix) & (x)
DIRECTORY OF OFFICERS AND EMPLOYEES & MONTHLY
RENUMERATION

(As on 31/08/2011)

SL. NO.	NAME	DESIGNATION	MONTHLY GROSS REMUNERATION
1	G. RAMA RAO	W.C.	94148
2	N. H. AHMED	DY. W.C.	65901
3	Vacant	A.A.O.	0
4	SMT. S.S. KAMBLE	W.A.	34205
5	PAWAN KUMAR	W.A.	34461
6	SANJAY J. GARG	STENO-II	47384
7	P.M. KUTTY	HCA	34722
8	D.N. KORI	HCA	32273
9	P.M.BAURASI	STENO-III	36719
10	N.M.KHAPEKAR	U.D.C.	29450
11	P.H.PUNWATKAR	U.D.C.	28203
12	U.J.WASNIK	U.D.C.	28203
13	G.S.MISHRA	U.D.C.	24038
14	R.M.DHARMIK	U.D.C.	24667
15	M.L.NIMJE	U.D.C.	22332
16	SMT. S.P.WANJARI	L.D.C.	19281
17	G.N.KAKDE	L.D.C.	19281
18	C.S.GUPTA	L.D.C.	22800
19	R.G.BOBADE	L.D.C.	20547
20	M.S.WAGHADE	L.D.C.	20149
21	D.S.PATLE	L.D.C.	22115
22	A.K.SASHIDHARAN	L.D.C.	17766
23	C.R.DANGE	DRIVER	28402
24	G.N. SHINDE	DRIVER	28192
25	R.G.CHOUDHARY	MTS	5953
26	S.N.HEDAU	MTS	17622
27	U.M. LOHI	MTS	21753
28	D.W. BHAGAT	MTS	18439
29	S.D.DANDGE	MTS	18375
30	DR.(MRS) A.S.PHADKE	CHIEF MEDICAL OFFICER(NFSG)	127745
31	DR. N.U.TABHANE	CHIEF MEDICAL OFFICER(NFSG)	118230
32	DR. S.K.JAIN	CHIEF MEDICAL OFFICER(NFSG)	114898
33	DR. D.L. MATE	MEDICAL OFFICER	47470

34	DR. R.M. MADHAVI	MEDICAL OFFICER(CONTRACT)	30000
35	DR. A.D.MALEWAR	MEDICAL OFFICER(CONTRACT)	30000
36	DR.V.K.AKUDE	MEDICAL OFFICER(CONTRACT)	30000
37	DR. G.R.LOHIYA	MEDICAL OFFICER(CONTRACT)	30000
38	DR. V.B.HASE	MEDICAL OFFICER(CONTRACT)	30000
39	DR. N.V. DESHPANDE	MEDICAL OFFICER(CONTRACT)	30000
40	DR. A.M. MOWADKAR	MEDICAL OFFICER(CONTRACT)	30000
41	DR.(MRS) M.M. MANE	MEDICAL OFFICER(CONTRACT)	30000
42	DR. ANHAR ANSAR	MEDICAL OFFICER(CONTRACT)	30000
43	DR. (MRS) SHALINI RODE	MEDICAL OFFICER(CONTRACT)	30000
44	DR. K.S. ZAMBRE	MEDICAL OFFICER(CONTRACT)	30000
45	DR. S.G.KAPSE	VAIDYA	61613
46	SHRI R.D.CHAMALWAR	VAIDYA	25613
47	SMT. M.J.DANDE	VAIDYA	26013
48	SMT. T.K.NAGDEOTE	STAFF NURSE	47707
49	SMT. P.B.BANGRE	STAFF NURSE	47160
50	SMT. R.S. GHAWADE	STAFF NURSE	46884
51	SMT. I.R. WAGHAMARE	STAFF NURSE	49816
52	SMT. S.M.MIRASHE	STAFF NURSE	46951
53	SMT. S.D.KADAM	STAFF NURSE	49816
54	SMT. M.R.KALBANDE	STAFF NURSE	47351
55	SMT. K.R.DONGRE	STAFF NURSE	46807
56	SMT. N.A. DABHADE	STAFF NURSE	46307
57	SMT. T.R.BODELE	STAFF NURSE	46307
58	SMT. U.R.KAMBLE	STAFF NURSE	46307
59	SMT. S.P.SAKHARE	STAFF NURSE	50846
60	SMT. J.A.HASE	STAFF NURSE	46097
61	SMT. M.ORIEL	STAFF NURSE	45663
62	SMT. S.S.NARVEKAR	A.N.M	32318
63	SHRI N.K.GANJIWALE	PHARMACIST	40570
64	SHRI P.P.DEO	PHARMACIST	39202
65	SHRI R.R.WAGHAMARE	PHARMACIST	38906
66	SHRI A.R.GADE	PHARMACIST	36787
67	SMT. M.B.WASNIK	PHARMACIST	37037
68	SHRI S.M.DESHMUKH	PHARMACIST	36787
69	SHRI P.E.DUBE	PHARMACIST	37187
70	SHRI D.G.DHULE	PHARMACIST	37187
71	SHRI R.M.NANDURKAR	PHARMACIST	37187
72	SHRI R.J.MAKODE	PHARMACIST	36240
73	SHRI C.S. MOWADE	PHARMACIST	37545
74	SMT. K.S.BORSE	PHARMACIST	31832
75	SHRI G.M.SELUKAR	PHARMACIST	29852
76	SHRI M.K.NATHANI	PHARMACIST	29852
77	SHRI P.P.LAWATE	PHARMACIST	32757

78	SHRI V.G.BAKSHE	PHARMACIST	42633
79	SHRI Y.B.LAKKEWAR	DRIVER	26691
80	SHRI G.P.WADHAI	DRIVER	26901
81	SHRI V.K.KORE	DRIVER	27787
82	SHRI B.N.MARAPE	DRIVER	31698
83	A.D.LANJEWAR	DRIVER	24776
84	SHRI B.S.ZANZAL	DRIVER	26644
85	SHRI SHEIKH ILIYAS	DRIVER	26644
86	SHRI CHACKO VERGHESE	DRIVER	24750
87	SHRI M.P.DOLAS	DRIVER	28534
88	SHRI W.N.KAROKAR	DRIVER	24792
89	SHRI V.D.OVHAL	DRIVER	17699
90	SHRI S.V.VEDE	DRIVER	22443
91	G.G.MATE	MTS	22851
92	G.B.TASKAR	MTS	16923
93	H.K.JAMBHULKAR	MTS	19850
94	SHRI B.G.LANJEWAR	MTS	22735
95	SHRI C.G.NAGARDHANE	MTS	22397
96	SHRI U.K.NIKOSE	MTS	22676
97	SHRI D.M.DESHMUKH	MTS	19805
98	SHRI V.S.KALSHETTY	MTS	20385
99	SHRI R.S.BAGDE	MTS	21468
100	SHRI A.G.BHALADHARE	MTS	19305
101	SHRI B.H.WAGHMARE	MTS	19515
102	SHRI N.R.PASIKANTI	MTS	18614
103	SHRI P.V.GIRIPUNJE	MTS	18614
104	SHRI S.S.PARMAR	MTS	19305
105	SHRI M.B.KHONDEKAR	MTS	18485
106	SHRI P.A.JANGILWAR	MTS	17201
107	SHRI V.V.JAMBHULKAR	MTS	17201
108	SHRI P.R.SINGH	MTS	20493
109	SHRI M.B.JADHAV	MTS	19850
110	SHRI V.V.DARBHE	MTS	21175
111	SHRI T.S.RAMTEKE	MTS	19302
112	SHRI M.C.KAWALE	MTS	20643
113	D.S.WAKODIKAR	MTS	19512
114	B.W.MESHRAM	MTS	20326
115	S.S.PICHAKE	MTS	18111
116	V.S.SAKHARE	MTS	17322
117	N.G.CHAKOLE	MTS	16984
118	P.D.KHOBRADE	MTS	16009
119	S.D.BHINGARDIVE	MTS	19012
120	SMT. V.H.WANKHEDE	MTS	19733

121	SMT. S.R.GOJRE	MTS	18416
122	SMT. S.B.DOMKAWALE	MTS	18642
123	SMT. S.R.KARANDE	MTS	18690
124	SMT. S.A.MASKE	MTS	20941
125	SMT. S.S.WAHANE	MTS	18321
126	SMT. R.S.RANVIR	MTS	17676
127	SMT. MAYA AMNE	MTS	17921
128	SHRI S.S.PEDNEKAR	MTS	20066

MANUAL 4(1)(b)(xi)
BUDGET ALLOCATION
(FUNDS SANCTIONED UNDER BUDGET ESTIMATES 2011-12)

(Rs. in '000)

UNIT OF APPROPRIATION	BWWF	IOMCMLWF	LSDMMLWF	CWWF
ADMINISTRATION	8415	1810	661	0
HEALTH	41365	2240	1235	3075
EDUCATION	48250	4593	755	530
RECREATION	70	25	15	0
HOUSING	0	0	0	0
MH-4250 MOTOR VEHICLE	480	0	0	25
MH-4250 MACH.& EQUIP.	50	0	0	0
TOTAL	98630	8668	2666	3630

- BWWF** - Beedi Workers Welfare Fund
IOMCMLWF - IronOre, ManganeseOre&ChromeOre Mines Labour Welfare Fund
LSDMMLWF - Limestone & Dolomite Mines Labour Welfare Fund
CWWF - Cine Workers Welfare Fund

MANUAL 4(1)(b)(xiii)

PARTICULARS OF RECIPIENTS OF CONCESSIONS, PERMITS OR AUTHORISATIONS GRANTED BY IT

Not applicable to Labour Welfare Organisation

MANUAL 4(1)(b)(xiv)

DETAILS IN RESPECT OF THE INFORMATION AVAILABLE TO OR HELD BY THE ORGANISATION REDUCED IN AN ELECTRONIC FORM

- i) Details of Organisation, its field units, function and duties
- ii) The powers and duties of officers and employees
- iii) Channel of supervision

- iv) Details of Schemes
- v) Details of State Advisory Committees
- vi) Directory of officers and employees alongwith remuneration
- vii) Budget allocation for the year 2011-12
- viii) Details of subsidy granted under Integrated Housing Scheme
- ix) Names, designation and other particulars of the Central Public Information Officer/Assistant Central Public Information Officer of the Organization

MANUAL 4(1)(b)(xvi)
PUBLIC INFORMATION OFFICERS
Organisation Central Public Information Officer

SNO.	NAME, DESIGNATION & ADDRESS OF PIO/APIOs	TELEPHONE/FAX NO.
------	---	-------------------

1.	PUBLIC INFORMATION OFFICER Shri Pawan Kumar Welfare Administrator Labour Welfare Organization CGO Complex, Block 'C' (2 nd Floor) Seminary Hills, NAGPUR – 440 006 (MS)	Phone (0712) 2510200 Fax (0712) 2510474
2.	ASSISTANT PIO	
a.	Dr.(Mrs.) A.S.Phadke Chief Medical Officer I/c. BWWF Dispensary C/o. Sonawane Maternity Home Near Sonmarg Talkies, Bhawanipeth PUNE 411 042	Phone (020) 26452422

3. Welfare Administrator, Labour
Welfare Organisation,
No.1-53/12(1), Darbar Hill,
PADIL-575 0073
S.K. District,
KARNATAKA.

Implementation of welfare schemes in the sphere of health and medical care, education, housing, family welfare, social security, water supply and recreation, formulated under Limestone & Dolomite Mines Labour Welfare Fund Act 1972, Iron Ore, Manganese Ore, Chrome Ore Mines Labour Welfare Fund Act 1976, Beedi Workers Welfare Fund Act 1976, Cine Workers Welfare Fund Act 1981 and **Assessment/Collection** of Cess on Limestone & Dolomite, Iron Ore, Manganese Ore & Chrome Ore under Limestone & Dolomite Mines Labour Welfare Fund Act 1972, Iron Ore, Manganese Ore and Chrome Ore Mines Labour Welfare Cess Act 1976

There are two Central Hospitals one at Mysore (50 bedded) and another 15 bedded Hospital at Yadgir apart from 38 Static cum Mobile/Static dispensaries in the states of Karnataka and Kerala.

The address of the Central Hospitals are given below:

1. Beedi Workers Welfare Fund Organisation,
Central Hospital,
Kalyanagiri Nagar, Mahadevapura Road,
Mysore-570 019.
2. Beedi & Mine Workers Welfare Fund Organisation,
Central Hospital,
Assar Mohalla,
Main Road,
Yadgir-585 201.

The Central Hospitals cater to the general health care (both indoor and outdoor) of the workers (mines/beedi) and their dependants.

MANUAL 4(1)(b)(ii)**THE POWERS AND DUTIES OF OFFICERS AND EMPLOYEES****Welfare & Cess Commissioner**

1. Functioning as Head of Department in respect of the Office of the Welfare & Cess Commissioner, Labour Welfare Organisation, Government of India, Ministry of Labour & Employment, Bangalore Region.
2. Responsible for implementation of Welfare Schemes approved by the Government of India, Ministry of Labour & Employment for welfare of workers employed in the Beedi, Mine and Cine Industries.
3. Responsible for collection of Cess on internal consumption of Iron Ore, manganese Ore and Chrome Ore & Limestone & Dolomite Ore.
4. Functioning as Vice-Chairman of the State Advisory Committee of Beedi, Limestone & Dolomite and Iron Ore, Manganese Ore and Chrome Ore Fund.

DY. WELFARE COMMISSIONER:

1. Functioning as Head of office in respect of the Iron Ore, Manganese Ore and Chrome Ore Fund.
2. Formulation, implementation and supervision of welfare measures and general supervision of the welfare Institutions.
3. Administration and Financial control in respect of the Dispensary and Multipurpose Institutes/ Developed Multipurpose Institutes under Iron Ore, Manganese Ore and Chrome Ore Fund.

ASSISTANT WELFARE COMMISSIONER/WELFARE ADMINISTRATOR:

1. Formulation, implementation and supervision of welfare measures and general supervision of the welfare Institutions.
2. Inspection under the Indian Mines Act.
3. Secretary of the Advisory Committee/Finance Sub-Committee.
4. Security Officer of the Organisation.
5. Financial & administrative functioning to the extent such powers have been delegated.
6. Transport - Controlling, maintenance and repairs of the Service Vehicles, Jeep, medical vans, cinema vans etc.
7. General Stores/stationary stores/other stores required for day to day functioning of the various welfare institutions/procurement, supply and maintenance – responsibilities under the General Financial Rules as amended from time to time and any other special or general orders.
8. Supervision of and carrying out the work of the Organisation(s) in the absence of the Welfare Commissioner or etc. according to the policy and directions of the latter.
9. Inspection of Welfare Institutions.
10. Any other duty assigned by the superior officers.

Administrative-cum-AccountsOfficer.

1. Maintenance of the accounts of the Organisation (s).
2. Preparation of the Budget.
3. Cheque Drawing Officer.
4. Drawing & Disbursing Officer.
5. Reconciliation of expenditure etc.
6. Settlement of the audit paras and objections.
7. Finance advice.
8. Maintenance of G.P.F. accounts pertaining to Group Employees.
9. Joint custody of cash along with the Cashier.
10. Any other duty that may be assigned by the superior officers.

Assistant Welfare Administrators

1. Formulation, implementation and supervision of welfare measures including proper functioning of the welfare institutions under his/their jurisdiction.
2. Contact/closely liaison with the workers to know their needs and to ensure that the benefits of the various welfare measures are availed by and reach them.
3. Responsible for holding functions/cultural activities/tournaments etc., at the welfare institutions under his supervision.
4. Inspection of the Welfare Institutions under his/their jurisdiction.
5. In charge of the Administrative/Establishment branch of the Organisation where entrusted to him/them.
6. Any other duty assigned by his superior officers

Head Clerk-cum-Accountant.

1. Responsible for the work of this section in which posted.
2. Responsible for the correct and up-to-date maintenance of accounts both receipt and expenditure including their registers etc.
3. Control over expenditure against sanctioned grant-reconciliation of accounts.
4. Checking of Cash Book.
5. Cent percent checking of the bills/cheques to be cashed with a view to ensure their correctness etc.
6. Settlement of audit paras/objections.
7. Expedient disposal of the work of these action-checking and guiding the staff under them-submission of periodical returns/report timely.
8. Recording and weeding of the file timely.
9. Any other duty assigned by the superior officers.

Upper Division Clerk

1. Scrutiny of complicated cases, noting thereon to facilitate the officer to take a decision, and drafting.
2. Guide to the Junior Clerk in the discharge of their work.

3. Up-to-date maintenance of various rules/orders/instructions/guard files.
4. Proper maintenance of the files under his charge including records.
5. Any other work allotted to him by the superiors.

Lower Division Clerk.

1. Maintenance of files in the prescribed manner-File register-typing work-Despatch & Diary work-Office records-placing of pucs, docketing them etc.
2. Noting and drafting on the files of simple nature.
3. Recording and weeding of old files.
4. Any other duty allotted to him by the superiors.

Medical Officer.

1. Planning, medical supervision and co-ordination.
2. Medical consultation /Ward work/Outdoor patient department work/dispensary work including proper functioning of the dispensary/indoor/outdoor wards.
3. Controlling, maintenance and repairs of the medical vans, if any.
4. Custody of medicines/medical equipments/general stores and maintenance of its account.
5. Financial and administrative functions so far as such powers have been delegated.
6. Supervision and controlling of the Welfare Centres/Sub Centres and other welfare institutions under their jurisdiction, if any.
7. Any other duty assigned by the superior officers.

Consultant-in-Surgery.

1. Functioning as Head of Office in respect of Central Hospital, Joda.
2. Planning, medical supervision and coordination.
3. Medical consultation/operation/ward work including proper functioning of the hospital.
4. Technical inspection of allopathic dispensaries to ensure their proper functioning.
5. Financial and administrative functions-administrative work which should be performed specifically by the Medical Supdt. Himself being Head of Office/Drawing & Disbursing Officer – matters of general principle and policy in hospital/administration-sanction of all kinds of leave to the Group C and Employees of the hospital and other – Establishment matters in respect of hospital and dispensaries which are put up specifically under the administrative control of Medical Superintendent by the Welfare Commissioner.
6. Matters relating to maintenance of hospital and residential accommodation.
7. Preparation of budget and expenditure control of Hospital and dispensaries specifically kept under the control of Consultant-in-Surgery.

8. Procurement, maintenance and supply of medicines/medical store equipment /other general store-responsibilities under the G.F.R. (as amended from time to time) and such other general or special orders in this regard.
9. Controlling, maintenance and repair of ambulance-cum-medical vans and other vehicle, if any, of the hospital/dispensaries given under the control of Consultant-in-Surgery.
10. Any other duty assigned by the superior officers.

Pharmacist.

1. Compounding and dispensing prescriptions according to the hospital/formulary or prescriptions of doctors.
2. Being responsible or initiating the indents, stores and maintenance of stock and accounts of medical supplies and appliances under his charge.
3. Providing first aid treatment to the injured and repeat prescription of the physicians when ordered in the absence of the doctors.
4. Compiling statistics of hospital dispensary in accordance with instructions, submission of periodical reports/returns etc.
5. Attending to work of the clinical side and doing the routine test of urine, faces and blood provided he has undergone adequate training.
6. Any other duty specified by the superior officer.

Radiographer/X-Ray Technician.

1. Taking diagnostic radiographs of patients as required by medical officers.
2. Advising patients or ward staff regarding preparation of patients before X-ray.
3. Developing and drying the exposed X-ray films.
4. Loading cassettes with X-ray films.
5. Storing unexposed X-ray films properly.
6. Keeping account of X-ray films and other supplies.
7. Maintaining record of X-ray report of the patients.
8. Sending radiographs to the wards.
9. Receiving back the X-ray films after the discharge of the patient and filling them in such a way that retrieval is easy.
10. Taking precautions to protect, himself, patients and other workers of the department from hazards of X-ray.
11. Assisting the radiologist in the deep X-ray treatment.
12. Wearing the film badge at all times of working in the department.
13. Keeping the premises of the department clean and adequately stocked with forms and stationary required.
14. Maintaining cordial relations with the public.
15. Any other duty assigned by the superior officers.

Staff Nurse.**A. General Care of the Patients.**

1. Responsible for the complete nursing care of the patients assigned to her.
2. Admission & discharge of the patients.
3. Assistance and instruction to patients and their relations.
4. Bathing patients including daily care of mouth, nails, pressure points.
5. Four hourly or more frequent to pressure points.
6. Giving and removing of bedspans and urine pots.
7. Giving and removing hot water bottles.
8. Bed making.
9. Feeding of patients.
10. Distribution of diets, milk etc.
11. Preparation of special foods, egg milk etc.
12. Technical nursing care of patients:-
 - (a) Administration of medicines.
 - (b) Administration of injections.
 - (c) Assistance in administration of inter venous injections.
 - (d) Preparing of injections and clearing up.
 - (e) Recording of medicines and injections given.
 - (f) Taking and charting T.P.R.
 - (g) Rounds with doctors.
 - (h) Technical procedures e.g. enema, catheterization, dressing, irrigations, oxygen therapy, preparing for and clearing after procedures.
 - (i) Preparation for and assistance in clinical tests and medical procedures. (j) Pre and postoperative care.
 - (k) Urine testing.
 - (l) Collecting labeling and dispatching of specimens.
 - (m) Escorting patients to and from departments.
 - (n) Giving and receiving reports.

B. Ward Management.

- (a) Handing over and taking charge of shift.
- (b) Keeping the ward clean and tidy.
- (c) Preparation of surgical supplies, bandages, splints.
- (d) Routing care and cleaning of dressing trolleys, cupboards apparatus, mackintosh, etc.

C. Any other duty assigned by the superior officers.

Sister-in-charge.

1. Supervision of Nursing personnel working in 50 bedded Central Hospital, Joda.
2. Allotment of work among Nursing personnel.
3. Responsible for proper maintenance of linen etc. at Central Hospital, Joda.

4. Overall supervision of cleaning, maintenance and sweeping of the surrounding of central Hospital, Joda.
5. Supervision of work attended by Contingent Sweepers etc.
6. Will also attend the duty of Staff Nurse when any staff nurse proceeds on leave or otherwise.
7. Any other work assigned by the superior officers.

Midwife

1. Conducting deliveries
2. Pre-natal and postnatal cares.
3. Care of infants and toddlers.
4. Foster sense of cleanliness among the women- visit to their homes for the purpose.
5. Family welfare work- medication of women for operation for the purpose- supply of condoms, free counseling.
6. Any other work assigned by the superior officers.
7. Assist the Male doctor in the dispensary in the treatment of women.

Assistant Engineer

1. Scrutiny of the proposals for construction of houses under various housing schemes, water supply schemes and sinking of wells as well as scheme for grant-in-aid for construction of sports Ground under Iron Ore, Manganese Ore & Chrome Ore Fund, Bangalore Region.
2. Supervision of construction works under Housing & Water Supply Schemes executed by the Mines Management for payment of subsidy of the Labour Welfare Organisation.
3. To get work done, repair and maintenance works of office building and staff quarters at Central Hospital, Mysore through the C.P.W.D./State P.W.D. to keep watch on the progress of work of construction of Staff Qrs. And ancillary buildings of Central Hospital, Mysore.
4. Any other duty assigned by the superior officers

Dhobi

1. Cleaning and washing of clothes, bed sheets, towel etc. of Indoor patients at Central Hospital, Joda.
2. Ironing of cloth etc.
3. Any other duty assigned by the superior officers.

Ward Boy

1. Will receive the patients on admission and assist them in getting into or out of the bed.
2. Will attend to the personal hygiene of patients washing and cleaning teeth, changing clothing, giving enema etc.
3. Will prepare the patients for operations, laboratory X-ray and other investigations.
4. Will transport patients to various departments of the hospital.
5. Will help in feeding patients and giving drinking water to the patients and washing utensils.
6. Will assist the nurse in handling and observation of patients and in simple basic nursing procedure.

7. Will assist the nurse or doctor in diagnostic and treatment procedures.
8. Will assist in collection and handling of pathological specimens.
9. Will assist the nurse in receiving supplies by running errand to other departments and individuals in the hospital.
10. Will make beds for ambulatory patients and assist nurse in making beds of non-ambulatory cases.
11. Will assist the nurse in getting supplies from the laundry, disinfecting mattresses and dispatching, dirty linen to the laundry.
12. Will clean and dusting of beds, doors, windows and other furniture's. Hewill assist in debugging and paste control of wards. Hewill assist in debugging and paste control of wards.
13. Will wash Walls and doors in wards.
14. Will assist in the sterilization of instrument and appliances and dressing and dressing of post-operative wounds.
15. Will render first aid to the patients in case of emergency.
16. Will prepare dead bodies, arrange their transportation to the mortuary and assist in terminal disinfections.
17. Any other duty assigned by the superior officers.

Cook.

1. To receive food articles from the storekeeper/warden.
2. Pre-prepare food as required.
3. Store the cooked food properly till distribution.
4. Distribution the food to the hostellers/ward-boys for supply to the patients.
5. Maintenance of the cooking appliances in good condition.
6. Observe personal hygiene while cooking.
7. Maintenance of cleanliness of the kitchen and utensils.
8. Precautions to prevent fire and injuries.
9. Any other duty assigned by the superior officers

Chowkidar-cum-Attendant.

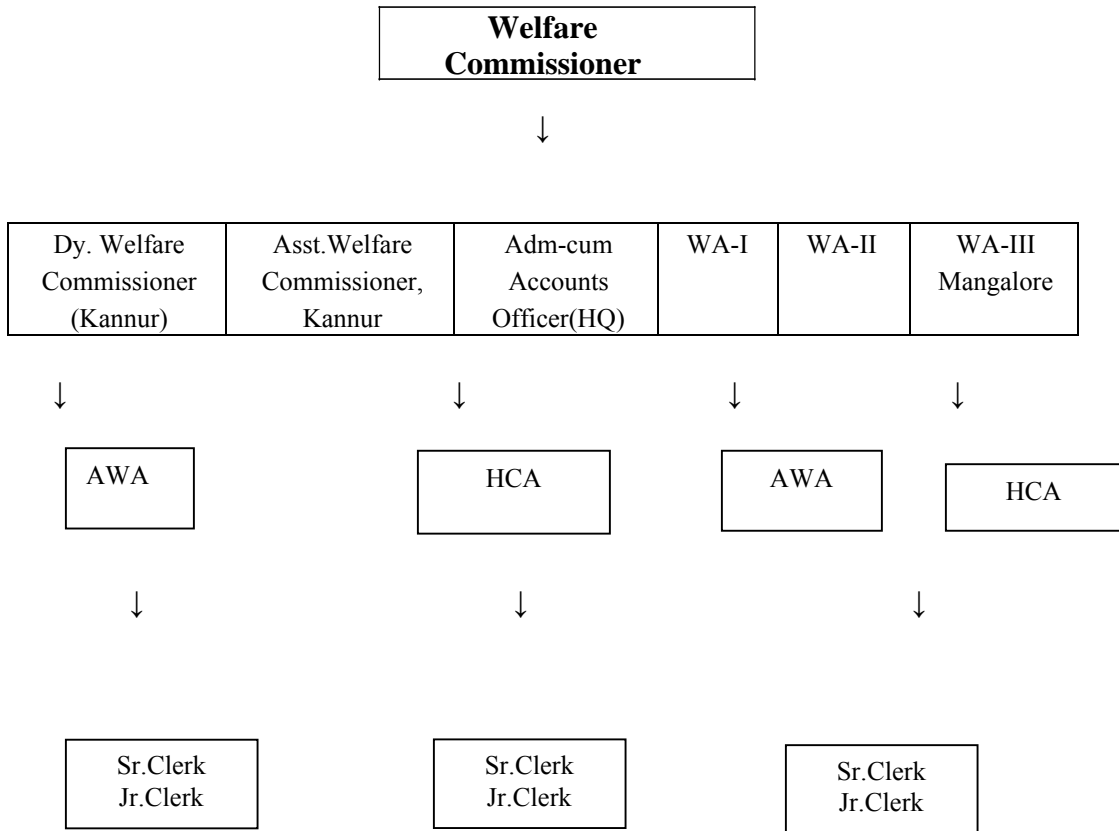
1. Will be on duty punctually at the approved area. Hewill be alert throughout the period of duty and perform the duties diligently and with vigilance.
2. Will be responsible for the security of the building equipment and patients.
3. Will check that all doors and windows which have to be kept locked during the non-working hours of the hospital/dispensary/welfare institutions/office(s) are securely locked.
4. Will check daily and see that the firefighting equipment is kept in good working condition and take immediate steps in firm fighting in case there is an incident of fire.
5. Will go round the area to see that no authorized persons are in the premises and prevent unauthorized movement of personnel equipment and supplies.
6. Will report immediately to higher authorities of unusual occurrence.
7. Will remain on duty till relieved.
8. Will perform duty as may be allotted to him by the superior officers.

MANNUAL4(1)(b)(iii)

**PROCEDUREFOLLOWEDINTHEDECISIONMAKINGPROCESS,INCL
UDINGCHANNELSOFSUPERVISIONANDACCOUNTABILITY.**

Proceduresprescribed by the headquarters(Labour WelfareDivision, Ministry of Labour) in the welfare schemesare followed. Powershave been delegated atvariouslevelsasper functionalneeds.

Channelofsupervisionandaccountability:



4(1)(b)(iv) NORMSSET FORDISCHARGE OF FUNCTIONS

UNDERHEALTHSCHEMES:

<u>Sl No.</u>	Name of Scheme	Time taken by Medical Officers/ Field Officer to forward the application	Time taken for settling of claims by Office of the Welfare Commissioner	
01	CANCER/HEART/KIDNEY/ MINOR DISEASES LIKE HERNIA, APPENDECTOMY, ULCER, GYNAECOLOGICAL AND PROSTRATEDISEASES	02 DAYS	1 Issuance of permission 2 Issuance of Sanction order after receipt of complete claim forms	02 days 07 days
02	SPECTACLES / DOMICILLIARY TREATMENT OF TB / MONETARY COMPENSATION FOR STERILISATION	02 DAYS	Scrutiny of Application andissuanceofsanction order	05 days
03	MATERNITYBENEFIT	02 DAYS	Scrutiny of Application andissuanceofsanction order	30 days
04	GROUP INSURANCESHEME	03 DAYS	Scrutiny&forwardingof application to LIC	07 days

UNDER EDUCATIONSHEME.

Scholarship/Grant for purchase of book setc.

1. Scrutiny/verification of applications: within 30 days of closing date of receipt of applications.
2. Issuing of sanctions for eligible applicants : within 30 days of verification.
3. Actual disbursement of the scholarships/grants : As per annual programme to be drawn by welfare commissioner

4(1)(b)(V)**THE RULES, REGULATIONS, INSTRUCTIONS, MANUALS AND RECORDS**

1. Limestone & Dolomite Mines Labour Welfare Fund Rules 1973.
2. Iron Ore, Manganese Ore, Chrome Ore Mines Labour Welfare Fund Rules 1978.
3. Beedi Workers Welfare Fund Rules 1978
4. Cine Workers Welfare Fund Rules 1984. _

WELFARE SCHEMES:**HEALTH SCHEMES****1 Free Medical Treatment**

Free Medical Care is extended to the Beedi/Mine and Cine workers through the Hospitals, Static Dispensaries and Static-cum-Mobile Dispensaries run by the Labour Welfare Organization.

There is one 50 bedded hospital for Beedi workers at Mysore and one 15 bedded Hospital for Beedi / mine workers at Yadgir and 38 Static cum Mobile/Static dispensaries in Karnataka and Kerala.

**2 Reimbursement of entire expenditure for treatment of cancer:
(Scheme was introduced on 01-12-1984)****CANCER TREATMENT:**

(for workers & dependents - 6 months continuous service is essential)

- a) Reimbursement of full expenditure ** for the treatment taken in Govt. hospital/govt. recognised hospitals.
- b) Subsistence allowance shall be paid @ Rs. 600-750 per month. Conveyance charges will be reimbursed from residence to hospital and back.

**3 Reimbursement of expenses for treatment of heart diseases:
(Scheme was introduced on 18-09-1984)****HEART DISEASES:**

(for workers & dependents 3 years continuous service is essential)

- a) Reimbursement of expenditure upto Rs. 1.3 lakhs for the treatment taken in govt hospital/Govt recognised hospital.
- b) Subsistence allowance shall be paid @ Rs. 750-1000/- per month. Conveyance charges will also be reimbursed from residence to hospital & back.

**4 Reimbursement of expenses for treatment of Kidney Transplantation etc:
(Scheme was introduced on 10-02-1992)**

- KIDNEY TRANSPLANTATION:
(for workers & dependants-
3 years continuous service is
essential)
- a) Reimbursement of expenditure upto Rs.2 lakh for the treatment taken in govt. hospital/govt. recognised hospital.
 - b) Subsistence allowance shall be paid @ Rs.750-1000/- per month. Conveyance charges will also be reimbursed from residence to hospital & back.

**5 Financial Assistance for minor diseases like Hernia, Appendectomy, Ulcer, Gynaecological diseases and prostrate diseases:
(Scheme was introduced on 13-12-2003)**

- Minor Diseases like :
Hernia, appendectomy, Ulcer,
Gynecological diseases, Prostrate
diseases.
(3 years continuous service)
(Only for Workers)
- a) Reimbursement of expenditure upto Rs.30,000/- for the treatment taken in govt. hospital/govt. recognized hospital.

For availing the benefit of the above schemes, the worker has to take prior permission of /inform the Welfare Commissioner for taking treatment in Govt. Hospital or Govt. recognized Hospitals in the prescribed form through the nearest Medical Officer of LWO dispensary and the claim has to be submitted in the prescribed form.

**6 Financial assistance for purchase of Spectacles:
(Scheme was introduced on 14-09-1984)**

- PURCHASE OF SPECTACLES:
(for workers only)-
- a) Reimbursement of expenditure upto Rs.300/- for purchase of spectacles.
 - b) Reimbursement of expenditure upto Rs.20/- for change of lens.

The worker has to procure the spectacle and send the original receipt along with the application to the Welfare Commissioner.

7 Maternity Benefit Scheme for Female Workers:

(Scheme was introduced in 1988)

<p>MATERNITY BENEFIT: (for Female workers only - 6 months continuous service is essential)</p>	<p>Financial Assistance of Rs.1000/- will be given for the first two deliveries.</p>
--	--

The female worker shall submit the claim of Maternity benefit after delivery along with birth certificate in the prescribed format.

8 Monetary Compensation for Sterilisation: (Scheme was introduced on 29-07-1988)

<p>MONETARY COMPENSATION his/her FOR STERILISATION or less (for worker & his or her spouse - 6 months continuous service is essential)</p>	<p>Rs.500/- will be paid if the worker or spouse undergoes Sterilisation having two living children.</p>
--	--

The worker has to submit the claim in the prescribed format.

9 Reservation of Beds in TB Hospital/Sanatoria and Domiciliary treatment of TB: (Scheme was introduced on 12-04-1978 & 06-08-1985)

<p>TREATMENT FOR T.B.: (for workers & dependents - 6 months continuous service is essential.</p>	<p>a) Free treatment in T.B. Hospital b) Rs.50/- per month for purchase of medicines c) Subsistence allowance shall be paid @ Rs.750-- to workers only.</p>
--	---

Worker has to avail treatment at the recognized TB Hospitals and submit the claims in the prescribed format. Subsistence allowance will be paid for the period of non payment of wages to the worker.

**10 Providing treatment for mental diseases
(Scheme was introduced on 28-09-1987)**

MENTAL DISEASES
workers & dependants)
months continuous service
(essential)

- a) Monthly expenditure of Rs.180 – (For
Rs.900/- per patient per month is (6
paid to the mental hospital
- b) Subsistence Allowance shall be paid
@ Rs.600/- to Rs.750/- per month

**11 Providing treatment for leprosy for workers. (
Scheme was introduced on 26-08-1986)**

LEPROSY RELIEF
workers & dependants
6 months continuous service

Subsistence Allowance shall be paid @ For
Rs.200/- to Rs. 300/- per month

**12. Scheme for providing financial assistance to widow/widower of Beedi/ Mine
/Cine workers as well as widow/widower Beedi/Mine /Cine workers for meeting
wedding expenses of their daughter**

- Rs. 5000/- in each occasion for marriage of 1st two daughters.

**13. Scheme for Grant-in-aid to State Govt / ESIC / Beedi Workers Group
Housing Co-op.Society/ NGOs/Control of State Govt..Recognised Hospital
/setc. for providing medical facilities to Beedi Workers.**

- Upto Rs.2.0 crores or 75% of the actual cost of construction including cost of
Medical equipments.
- Rs.4.0 lakh or 75% of the actual cost of Ambulance/Mobile Van whichever is less.
- Rs.10.0 lakh per annum or 75% of the actual cost, towards supply of medicines to a 15-bedded
hospital maintained by above organisation.
- The said institutions are eligible for grant in aid if they intend to expand the existing
infrastructure or to provide both indoor and outdoor medical facilities to the
Beedi workers.
- Recurring expenses including payment of salary to the Medical/Paramedical/
Ministerial staff has to be borne by the respective institution.

14 Grant In Aid To Mine Management For Maintenance Of Standard Dispensary Services:

Applicability Any Mine management which maintains Standard Dispensary/Hospital

Benefits: Grant in aid payable @10 paise per Metric Tonne of Iron Ore/Manganese Ore/Chrome Ore produced and @ 40 paise per metric tonne of Limestone & Dolomite produced or 75% of the expenditure on Medicines and establishments charges, whichever is less.

15. Financial assistance to mine workers involved in serious accident

Applicability Any mine worker who meets with fatal accident or is totally /permanently incapacitated in mine accident.

Benefits A lump sum grant of Rs.10,000/- .An amount of Rs.1000/- per month for a maximum period of five years. A monthly scholarship of Rs.250/- to each of the school going child till the age of 21 years or his/her marriage whichever is earlier. (The children availing this will not be eligible for scholarship under Financial assistance for Education.)

16. Financial assistance to mine workers for artificial limbs

Applicability Any mine worker

Eligibility Worker who loses their limb while on duty.

Benefits The worker is entitled for supply of artificial limb from any of the recognised/approved centres of Government of India. The total expenditure including the cost of limbs and traveling expenses to the centre is borne by Labour Welfare Organisation.

EDUCATIONSCHEME:

FINANCIALASSISTANCEFOREducation

1. FinancialAssistancefor providing Scholarship to the wardsof Beedi Workers.

UndertheEducationSchemefinancial assistanceisprovidedtotheschool going childrenof workers studying fromClass1toprofessionalcoursesranging from Rs.250/- to Rs.8000/- per annum.

	<u>BOYS</u>	<u>GIRLS</u>
1. Class1 to IV.....	250/-	250/-
2. Vto VIII Std.....	500/-	940/-
3. IX Std.....	700/-	1,140/-
4. X.....	1,400/-	1,840/-
5. XI, XII/PUC I &II.....	2,000/-	2,440/-
6. 3yrsdiploma/Graduation/PG.....	3,000/-	3,000/-
7. Professionaldegree..... BE/MBBS/BSc. (Agri.)	8,000/-	8,000/-

The worker hasto submitthe application tothe Schoolwhere the children of the worker is studying in the prescribed form. The Head Master of the School has to submit the prescribed statement in case of Renewal/Fresh Students with certificate along with sealand signaturesof the school, and to send applications also in case of new students and copy of MarksCard with a copy of identity card within the prescribed time limit.

2. Financial assistance for purchase of vehicle for schoolgoing children

Applicability Minemanagement(Lime Stone & Dolomite Mine & Iron/Manganese/Chrome ore mine)

Eligibility Minimum children (studying in school/college or other institutions) to be benefited should not be less than 50 for a normal bus and 30 for minibus.

Benefits Financial assistance limited to 75% of the actual or Rs. 5 lakh for normal bus/3 lakh for a minibus.

HOUSING SCHEME:

Revised Integrated Housing Scheme 2007 for Beedi and Mine workers:

The Scheme will be funded by the Central Government and implemented by the Labour Welfare Organisation in respective region.

Cost:

Minimum cost of construction would be Rs. 45,000/- per tenement (Rs. 40,000/- Central subsidy plus Rs. 5,000/- workers contribution). Adwelling unit costing up to Rs. 1.00 lakh would be admissible under the scheme.

Mode of Application:

Applications in the prescribed form completed in all respects along with the contribution of the workers @ Rs. 5,000/- per tenement from the eligible beneficiary shall be deposited with the Welfare and Cess Commissioner.

Subsidy:

A uniform Central subsidy of Rs. 40,000/- per worker per unit will be granted. The 1st installment of the subsidy of Rs. 20,000/- would be released at the time of grant of administrative approval and after submission of Agreement and deposit. The 2nd

installments of subsidy will be released on the construction reaching the roof level.

Eligibility:

Beedi worker engaged in Beedi industry for not less than 1 year. The monthly income of the family should not exceed Rs.6500/- per month.

The applicant Beedi / Mine worker should not have a House in his/her own name or in the name of his/her spouse or any of the dependents.

The applicant beedi / mine worker or his/her spouse or any of the dependents should not have earlier availed the facility of financial assistance under any housing scheme of the Government.

The house / flat will be completed within a period of 18 months.

All the above conditions of eligibility would be applicable to Iron Ore / Limestone Ore, Dolomite Ore, Chrome/Mica Ore & Manganese Ore Mine workers except in their cases; the family monthly income should not exceed Rs.10,000/-

TYPE I HOUSING SCHEME FOR MINE WORKERS

Applicability Mine workers employed in the Iron Ore/Manganese ore/Mica/Chrome Ore/Limestone & Dolomite mining industry. The land to be provided by the Mine management at mine site.

Eligibility The life of the Mine should not be less than 15 years. The management must be employing regular mine workers and having residential provision for contract workers more than the houses applied for.

Benefits A subsidy of Rs.40,000/- per house or 75% of the actual cost whichever is less will be given to the Mine management who will construct the house.

TYPE II HOUSING SCHEME FOR MINE WORKERS.

Applicability Mineworker employed in the Iron Ore/Manganese Ore/Mica/Chrome Ore/Limestone and Dolomite mining Industry. The land to be provided by the Mine management at the mine site.

Eligibility The life of the mine should not be less than 15 years. The management must be employing regular mine workers and having residential provision for contract workers more than the houses applied for.

Benefits A subsidy of Rs. 50,000/- per house or 75% of actual cost whichever is less is given to the management who will construct the house.

2. Grant-in-aid to registered Co-op. Societies of Beedi Workers with 75 or more members for Construction of Workshed & Godown:

- Minimum area of the workshed and godown should not be less than 750 sq. ft. and 600 sq. ft. respectively with a minimum life of 20 years.
- Subsidy of maximum of Rs. 1.50 lakhs or 75% of actual cost of construction after completion of construction.
- Amount is released after inspection by the officers nominated by Welfare Commissioner.

SOCIAL SECURITY SCHEME:

➤ Beedi and Cine Workers in the age group of 18-60 years and who are not subscribers of Employees Provident Fund scheme are covered under the Group Insurance Scheme. The benefits under the scheme are as under.

Natural Death	Rs. 10,000/-	} Not applicable for Cine Workers
Accidental Death	Rs. 25,000/-	
Partial Disability	Rs. 12,500/-	
Total Disability	Rs. 25,000/-	

WATERSUPPLYSCHMESFORMINEWORKERS.

Applicability Minemanagements

Eligibility In area of concentration of mine workershouses.

Benefits 75%oftheactualcostoftheschemeprovidingwatersupplytothemine workers.

GRANTINAIDFORLIBRARIESFORMINEWORKERS

Applicability Minemanagements

Eligibility Managements should run libraries for the benefit of minimum 100 workers.

Benefits Grant-in-aid of maximumof Rs.10,000/- per annum.

RECREATIONAL SCHEMES

SUPPLYOFTVSETS

Applicability Mineand BeediWorkers

Eligibility Minemanagements and BeediWorkersCo-operative Societies

Benefits Rs.10,000/- for colour TVsetand Rs.4000/- for B&W TVSet.

GRANTINAIDFORPURCHASEOFDISHANTENNA

Applicabilty MineManagements

Eligibility Minemanagementswho provide housing facilitiesto their workers and wheresuch housesforma colony of at least100 houses.

Benefits Payment limited to 50% of the actual cost of the dish antenna including all the accessories or Rs.30,000/- whichever is less.

ORGANISING SPORTS/GAMES SOCIAL & CULTURAL ACTIVITIES

Applicability Mine and Beedi workers

Eligibility a) Each mine management with a group of mines under their control will be eligible for reimbursement of expenditure.

b) Beedi management or social and cultural organisation of repute. b)

Prior approval of the competent authority is required to be obtained.

Benefits A For mine managements

1) For purchase of sports gear : 75% of the actual expenditure subject to a limit of Rs.20000/- in a financial year.

2) For Sports/Games/Tournaments activity : 75% of the actual expenditure subject to limit of Rs.20000/- in a financial year.

3) For social activities: Expenditure limited to Rs.2000/- x 7 = Rs.14000/- or 75% of the actual expenditure, whichever is less

4) For cultural activities: Expenditure limited to Rs.2,500/- x 3 = Rs.7500/- or 75% of the actual expenditure, whichever is less

B For Beedi Managements

75% of the actual cost of the event subject to a maximum of Rs.2500/- per event.

GRANT IN AID FOR SPORTS GROUND

Applicability Mine workers only.

Eligibility The grant-in-aid will be admissible only for provision of Sports Ground where the Concentration of workers is not less than 250. Detailed estimate with site plan indicating the place where the sports ground is proposed to be located should be furnished along with application.

Benefits Financial assistance will be a grant-in-aid payable subject to a maximum of Rs..5000/- on matching basis.

EXCURSION CUM STUDY TOUR

Applicability Mine Workers

- Eligibility**
- 1) All permanent and temporary workers.
 - 2) His/hers name should be in the Form 'B' register and has put in continuous service of at least two years.
 - 3) He should possess a valid Identity Card on the date of tour.
 - 4) The period of tour and total distance to and from should not exceed ten days and 3000 Km respectively.
 - 5) The number of workers in one trip should not be less than 10 and not more than 50 in any case.
 - 6) To obtain prior approval of Welfare Commissioner before the tour is undertaken.

Benefits Grant-in-Aid payable on matching basis subject to a maximum of Rs.20000/- per tour.

MOTOR VEHICLE FOR TRANSPORTATION OF MINE WORKERS (EXCEPT MICA)

Applicability Mine Workers

- Eligibility**
- 1) The number of mine workers to be benefited should not be less than 75 in case of a normal bus and 40 in case of minibus.
 - 2) Assistance will be paid to the mine managements.

Benefits Financial assistance will be as follows:

- 1 Normal bus 75% of the actual cost of Rs.5 lakh whichever is less.
- 2 Mini Bus 75% of the actual cost of Rs.3 lakh whichever is less.

GRANT IN AID FOR SETTING UP OF COMMUNITY CENTRES FOR BENEFIT OF BEEDI WORKERS

- Benefit is available for setting up of Community Centre in beedi Workers Housing Colony having minimum 50 houses.
- The State Government should submit the plan and estimate for construction of Community Hall duly approved by competent authorities.
- the minimum covered area not less than 50 sq. meters with a life of more than 20 years.
- an amount of Rs.1.00 lakh is released on completion of construction after inspection by the Officers of Labour Welfare Organisation.

4(1)(b)(vi)

STATEMENT OF THE CATEGORIES OF DOCUMENTS THAT ARE HELD BY IT OR UNDER ITS CONTROL.

Documents pertaining to the implementation of the schemes are held by the Labour Welfare Organisation.

**4(1)(b)(vii) PARTICULARS OF ARRANGEMENT THAT EXISTS
FOR CONSULTATION WITH, OR REPRESENTATION
BY, THE MEMBERS OF THE PUBLIC IN RELATION TO THE FORMUL
ATION OF ITS POLICY OR IMPLEMENTATION THEREOF**

The policies are formulated considering the recommendations of the Central Advisory Committees under different funds and the State Advisory Committees recommend the implementation part thereof.

MINISTRY OF LABOUR AND EMPLOYMENT

NOTIFICATION

New Delhi, the 15th November, 2010

S.O. 2783(E) Whereas, by a notification of the Government of India in the Ministry of Labour and Employment number S.O.647(E), dated the 4th May, 2006, the Central Government constituted an Advisory Committee for Beedi Workers Welfare Fund for the State of Karnataka, for a period of three years;

And, whereas, the term of the said Committee has since expired on 3rd May, 2009.

And, whereas, the Central Government is of the view that such a Committee must be reconstituted.

Now, therefore, in exercise of the powers conferred by Section 5 of the Beedi Workers Welfare Fund Act, 1976 (62 of 1976), read with sub-rule (2) of rule 3, rule 4 and rule 16 of the Beedi workers Welfare Fund Rules, 1978 and in supersession of the notification of the Government of India in the Ministry of Labour & Employment number S.O.647(E), dated the 4th May, 2006, except as respects things done or omitted to be done before such supersession, the Central Government hereby reconstitutes an Advisory Committee for Beedi Workers Welfare Fund for the State of Karnataka and appoints the following persons to the said Committee for a period of three year from the date of publication of this notification in the Official Gazette, namely:-

- | | | | |
|-----|---|---|---------------|
| (1) | Minister of Labour,
Government of Karnataka,
Bangalore. | - | Chairman |
| (2) | Welfare Commissioner,
Government of India,
Labour Welfare Organisation,
Bangalore. | - | Vice-Chairman |

Representative of the State Government appointed under Rule 3(2)(a)(iii)

- | | | | |
|-----|---|---|---|
| (3) | Commissioner of Labour,
Government of Karnataka
Bangalore | - | Member
(ex-officio)
State Government Representative |
|-----|---|---|---|

Representative of the State Legislature appointed under rule 3(2)(a)(iv)

- | | | | |
|-----|--|---|--|
| (4) | Smt. Mallika Prasad, M.L.A.,
Puttur Constituency
Koustuba, Boluvaru-574201,
Puttur Taluk,
Dakshina Kannada District. | - | Member
Member of Legislative Assembly |
|-----|--|---|--|

Representatives of Employers appointed under rule 3(2)(a)(v)

- | | | | |
|-----|--|---|--------|
| (5) | Shri P. Raghuveer Naik,
Managing Partner,
Prakash Beedi Works Private Limited,
Kodiyala, Bailu,
Mangalore-3,
Dakshina Kannada District. | - | Member |
| (6) | Shri B. Ramesh Pai, | - | Member |

Managing Partner,
Bharath Tobacco Trading Company,
Post Box No.46,
Nippani,
Belgaum District.

Representatives of employees appointed under rule 3(2)(a)(vi)

- | | | | |
|-----|---|---|----------------------------------|
| (7) | Smt. Sukanya,
Wife of Shri Shekar
Bylakere Post,
Udupi. | - | Member
(Women Representative) |
| (8) | Shri Ahamed Pasha (Anju)
Son of Shri Chotu Sabh,
A.R. Extension,
Opposite to Mekha Masidi,
Hosakote Town,
Bangalore Rural District-562114. | - | Member |
| (9) | Welfare Administrator,
Labour Welfare Organisation,
Bangalore. | - | Secretary |

2. The headquarters of the said Advisory Committee shall be at Bangalore.

[F.No.U-19012/03/2009-W.II(C)]
ANIL SWARUP, Director General
(Labour Welfare) / Jt.Secy.

MINISTRY OF LABOUR AND EMPLOYMENT

NOTIFICATION

New Delhi, the 13th December, 2010

S.O. 2929(E) Whereas, by a notification of the Government of India in the Ministry of Labour and Employment number S.O.807(E), dated the 10th June, 2005, the Central Government constituted an Advisory Committee for Cine Workers Welfare Fund for the State of

Karnataka, for a period of three years and the term of the said Committee has since expired on 9th June, 2008;

And, whereas, the Central Government is of the view that such a Committee must be reconstituted.

Now, therefore, in exercise of the powers conferred by Section 5 of the Cine Workers Welfare Fund Act, 1981 (33 of 1981), read with sub-rule (2) of rule 3, clause (a) of sub rule (1) of rule 4 and rule 16 of the Cine workers Welfare Fund Rules, 1984 and in supersession of the notification of the Government of India in the Ministry of Labour & Employment number S.O.807(E), dated the 10th June, 2005, except as respects things done or omitted to be done before such supersession, the Central Government hereby constitutes an Advisory Committee, for Cine Workers Welfare Fund for the State of Karnataka to advise the Central Government on the matters arising out of the administration of the said Act, as may be referred to it by the Central Government including matters relating to the application of the Cine Workers Welfare Fund, namely:-

- | | | | |
|-----|---|---|-----------------------------|
| (1) | Labour Minister,
Government of Karnataka,
Bangalore. | - | Chairman |
| (2) | Welfare Commissioner,
Labour Welfare Organisation,
Bangalore. | - | Vice-Chairman
ex-officio |

Representative of the Central Government appointed under Rule 3(2)(a)(iii)

- | | | | |
|-----|--|---|----------------------|
| (3) | Deputy Chief Producer,
Films Division,
Bangalore | - | Member
ex-officio |
|-----|--|---|----------------------|

Representative of the State Government appointed under rule 3(2)(a)(iv)

- | | | | |
|-----|---|---|----------------------|
| (4) | Commissioner of Labour,
Government of Karnataka,
Bangalore. | - | Member
ex-officio |
|-----|---|---|----------------------|

Representatives of Producers appointed under rule 3(2)(a)(v)

- | | | | |
|-----|--|---|--------|
| (5) | Shri K.C.N. Chandrashekar,
No.9/7, K.C.N. Bhavan,
Yamunabai Road, Mahavanagar,
Bangalore560001. | - | Member |
|-----|--|---|--------|

- (6) Shri SA.RA. Govindu, - Member
No.67/1, 7th Cross,
Maruthi Layout,
Basaveshwara Nagara,
Bangalore-560079.
- (7) Shri N. Kumar, - Member
No.526/9, 9thMain Road,
R.P.C. Layout, Hampinagar,
Bangalore-560040.

Representatives of Cine Workers appointed under rule 3(2)(a)(vi)

- (8) Shri K.S. Ravindranath, - Member
No.21, Lakshmi Shankara Nilaya,
Telecom Colony,
2ndCross Road,
Virupaksha Puram,
Bangalore.
- (9) Shri Ashok, - Member
No.1/1, 2ndMain Road,
Gandhinagara,
Bangalore-560009.
- (10) Shri Ananth S.K., - Member
S/o Late S.A. Keshava Murthy,
Sri Channakeshva Nilaya,
No.5, 2nd Cross, Ramakrishnaiah Road,
Seshadripuram,
Bangalore-560020.

Women representative appointed under rule 3(2)(a)(vii)

- (11) Smt. Gayathri Prabhakar, - Member
No.1/1, 2nd Main road,
Gandhi Nagara,
Bangalore-560009.

Secretary appointed under Rule 3(2)(b)

- (12) Welfare Administrator, - Secretary
Labour Welfare Organisation,
Bangalore.

2. The headquarters of the said Advisory Committee shall be at Bangalore.

3. The tenure of the members (other than ex officio members) shall be for a period of three years.

[F.No.U-19012/01/2008-W.II(C)]
ANIL SWARUP, Director General
(Labour Welfare) / Jt.Secy.

MINISTRY OF LABOUR AND EMPLOYMENT

NOTIFICATION

New Delhi, the 23rd February, 2010

S.O. 456(E)- In exercise of the powers conferred by Section 5 of the Beedi Workers Welfare Fund Act, 1976 (62 of 1976), read with sub-rule 3 and rule 16 of the Beedi Workers Welfare Fund Rules, 1978, and in supersession of the notification of the Government of India in the Ministry of Labour and Employment, vide number S.O.18(E), dated the 4th January, 2006, except as respects things done or omitted to be done before such supersession, the Central Government hereby constitutes an Advisory Committee for Beedi Workers Welfare Fund for the State of Kerala and appoints the following persons to the said Committee for a period of three years from the date of publication of this notification in the Official Gazette, namely:-

(1) Minister of Labour,
Government of Kerala,
Thiruvananthapuram. - Chairman

Officer appointed under rule 3(2)(a)(ii)

(2) Welfare Commissioner,
Government of India,
Labour Welfare Organisation,
Bangalore. - Vice-Chairman
(ex-officio)

Representative of the State Government appointed under rule 3(2)(a)(iii)

(3) Commissioner of Labour,
Government of Kerala,
Thiruvananthapuram. - Member

Member of Legislative Assembly appointed under rule 3(2)(a)(iv)

(4) Shri K. Kunhiraman, M.L.A.,
Kerala Legislative Assembly, - Member

Thiruvananthapuram,
Kerala.

Representatives of Employers appointed under rule 3(2)(a)(v)

- | | | | |
|-----|--|---|--------|
| (5) | Shri C. Rajan,
Chairman,
Kerala Dinesh Beedi Central Co-operative
Society Limited,
Kannur. | - | Member |
| (6) | Shri A. Pareed Haji,
Managing Partner,
M/s. Khaja Beedi Company,
Chavakkad,
Thrissur. | - | Member |

Representatives of workers appointed under rule 3(2)(a)(vi)

- | | | | |
|-----|--|---|--------|
| (7) | Shri P. Rajan,
General Secretary,
Kerala National Beedi Workers Federation,
INTUC, Fort Road,
Kannur-670001. | - | Member |
| (8) | Shri K.P. Sahadevan,
Secretary,
Tobacco Workers Union (C.I.T.U),
Kannur. | - | Member |

Women representative appointed under rule 3(2)(a)(vii)

- | | | | |
|-----|---|---|--------|
| (9) | Smt. Baby Shetty,
AKG Mandiram,
Hossangadi, Manjeshwar,
Kasargod District. | - | Member |
|-----|---|---|--------|

Secretary appointed under rule 3(2)(b)

- | | | | |
|------|---|---|-----------|
| (10) | Deputy Welfare Commissioner,
Labour Welfare Organisation,
Kannur. | - | Secretary |
|------|---|---|-----------|

2. The Central Government hereby fixes Kannur as the headquarters of the said Advisory Committee.

[No.U-19012/02/2009-W.II(C)]
ANIL SWARUP, Director General (Labour Welfare)/
Jr.Secy.

4(1)(b)(ix)&(x)

DIRECTORY OF OFFICERS AND EMPLOYEES & MONTHLY REMUNERATION

Office of the Welfare & Cess Commissioner,
Ministry of Labour & Employment,
Labour Welfare Organisation,
6/7/12, Crescent Road Cross, K.P. East,
Bangalore-560 001.
KARNATAKA.

Sl. No.	Name & Designation.	Scale of Pay/Pay Band	Place of posting with complete address.
(1)	(2)	(3)	(4)
1	Shri. G. Gopal Welfare Commissioner	37400-67000+8700 Rs. 90576/-	Office of the Welfare & Cess Commissioner, Ministry of Labour & Employment, Labour Welfare Organisation, 6/7/12, Crescent Road Cross, K.P. East, Bangalore-560 001. KARNATAKA.
2	Smt. N. Shailaja Admn-cum-Accounts Officer	9300-34800+5400 Rs. 54028/-	Office of the Welfare & Cess Commissioner,

			Ministry of Labour & Employment, Labour Welfare Organisation, 6/7/12, Crescent Road Cross, K.P. East, Bangalore-560 001. KARNATAKA.
3	Smt. Renjini Das Welfare Administrator	9300-34800+4600 Rs. 35848/-	Office of the Welfare & Cess Commissioner, Ministry of Labour & Employment, Labour Welfare Organisation, 6/7/12, Crescent Road Cross, K.P. East, Bangalore-560 001. KARNATAKA.
4	Shri. Mahesh.M. Sattikar Welfare Administrator	9300-34800+4600 Rs. 31574/-	Office of the Welfare & Cess Commissioner, Ministry of Labour & Employment, Labour Welfare Organisation, 6/7/12, Crescent Road Cross, K.P. East, Bangalore-560 001. KARNATAKA.
5	Smt. Saroj Deshpande Welfare Administrator	9300-34800+4600 Rs. 29542/-	Office of the Welfare Administrator, Labour Welfare Organisation, No.1-53/12(1), Darbar Hill, PADIL-575 073 S.K. District, KARNATAKA.
6	Smt. Grishma Asst. Welfare Administrator	9300-34800+4200 Rs. 29132/-	Office of the Welfare & Cess Commissioner, Ministry of Labour & Employment, Labour Welfare Organisation, 6/7/12, Crescent Road Cross, K.P. East, Bangalore-560 001. KARNATAKA.

7	Kum. Neetha Susanna Rebello Asst. Welfare Administrator	9300-34800+4200 Rs. 27593/-	Office of the Welfare & Cess Commissioner, Ministry of Labour & Employment, Labour Welfare Organisation, 6/7/12, Crescent Road Cross, K.P. East, Bangalore-560 001. KARNATAKA.
8	Shri. L. Krishnamurthy Head Clerk-cum-Accountant	9300-34800+4600 Rs. 39731/-	Office of the Welfare & Cess Commissioner, Ministry of Labour & Employment, Labour Welfare Organisation, 6/7/12, Crescent Road Cross, K.P. East, Bangalore-560 001. KARNATAKA.
9	Shri. M.B. Ramesh Head Clerk-cum-Accountant	9300-34800+4200 Rs. 34989/-	Office of the Welfare & Cess Commissioner, Ministry of Labour & Employment, Labour Welfare Organisation, 6/7/12, Crescent Road Cross, K.P. East, Bangalore-560 001. KARNATAKA.
10	Shri. N. Prabhakar Steno Grade II	9300-34800+4800 Rs. 44645/-	Office of the Welfare & Cess Commissioner, Ministry of Labour & Employment, Labour Welfare Organisation, 6/7/12, Crescent Road Cross, K.P. East, Bangalore-560 001. KARNATAKA.
11	Smt. R. Yamuna Steno Grade III	9300-34800+4600 Rs. 41204/-	Office of the Welfare & Cess Commissioner, Ministry of Labour & Employment, Labour Welfare Organisation,

			6/7/12, Crescent Road Cross, K.P. East, Bangalore-560 001. KARNATAKA.
12	Shri. H. Rupla Naik Senior Clerk	9300-34800+4600 Rs. 30789/-	Office of the Welfare & Cess Commissioner, Ministry of Labour & Employment, Labour Welfare Organisation, 6/7/12, Crescent Road Cross, K.P. East, Bangalore-560 001. KARNATAKA
13	Smt. K.N. Lalitha Senior Clerk	9300-34800+4200 Rs. 32860/-	Office of the Welfare & Cess Commissioner, Ministry of Labour & Employment, Labour Welfare Organisation, 6/7/12, Crescent Road Cross, K.P. East, Bangalore-560 001. KARNATAKA
14	Shri. R. Krishnamurthy Senior Clerk	9300-34800+4200 Rs. 34862/-	Office of the Welfare & Cess Commissioner, Ministry of Labour & Employment, Labour Welfare Organisation, 6/7/12, Crescent Road Cross, K.P. East, Bangalore-560 001. KARNATAKA
15	Smt. Gayathri. R Senior Clerk	9300-34800+4200 Rs. 31792/-	Office of the Welfare & Cess Commissioner, Ministry of Labour & Employment, Labour Welfare Organisation, 6/7/12, Crescent Road Cross, K.P. East, Bangalore-560 001. KARNATAKA
16	Shri. D. Basavana Goud Senior Clerk	5200-20200+2800 Rs. 29921/-	Office of the Welfare & Cess Commissioner,

			Ministry of Labour & Employment, Labour Welfare Organisation, 6/7/12, Crescent Road Cross, K.P. East, Bangalore-560 001. KARNATAKA
17	Shri. S. Sreenivasa Senior Clerk	5200-20200+2800 Rs. 28232/-	Office of the Welfare & Cess Commissioner, Ministry of Labour & Employment, Labour Welfare Organisation, 6/7/12, Crescent Road Cross, K.P. East, Bangalore-560 001. KARNATAKA
18	Shri. S. S. Mahendra Senior Clerk	5200-20200+2800 Rs. 26627/-	Office of the Welfare & Cess Commissioner, Ministry of Labour & Employment, Labour Welfare Organisation, 6/7/12, Crescent Road Cross, K.P. East, Bangalore-560 001. KARNATAKA
19	Smt. V.S. Vasanthi Senior Clerk	5200-20200+2800 Rs. 24038/-	Office of the Welfare & Cess Commissioner, Ministry of Labour & Employment, Labour Welfare Organisation, 6/7/12, Crescent Road Cross, K.P. East, Bangalore-560 001. KARNATAKA
20	Shri. K.N.N. Rao Junior Clerk	5200-20200+2400 Rs. 23756/-	Office of the Welfare & Cess Commissioner, Ministry of Labour & Employment, Labour Welfare Organisation, 6/7/12, Crescent Road Cross, K.P. East,

			Bangalore-560 001. KARNATAKA
21	Kum. N. Shobha Junior Clerk	5200-20200+2400 Rs. 23430/-	Office of the Welfare & Cess Commissioner, Ministry of Labour & Employment, Labour Welfare Organisation, 6/7/12, Crescent Road Cross, K.P. East, Bangalore-560 001. KARNATAKA.
22	Smt. B.G. Saraswathi Junior Clerk	5200-20200+2000 Rs. 21711/-	Office of the Welfare & Cess Commissioner, Ministry of Labour & Employment, Labour Welfare Organisation, 6/7/12, Crescent Road Cross, K.P. East, Bangalore-560 001. KARNATAKA
23	Smt. Tanuja Karna Junior Clerk	5200-20200+1900 Rs. 13303/-	Office of the Welfare & Cess Commissioner, Ministry of Labour & Employment, Labour Welfare Organisation, 6/7/12, Crescent Road Cross, K.P. East, Bangalore-560 001. KARNATAKA
24	Shri. Jayant Kumar Junior Clerk	5200-20200+1900 Rs. 13303/-	Office of the Welfare & Cess Commissioner, Ministry of Labour & Employment, Labour Welfare Organisation, 6/7/12, Crescent Road Cross, K.P. East, Bangalore-560 001. KARNATAKA
25	Shri. Arun Kumar Junior Clerk	5200-20200+1900 Rs. 14897/-	Office of the Welfare & Cess Commissioner, Ministry of Labour & Employment,

			Labour Welfare Organisation, 6/7/12, Crescent Road Cross, K.P. East, Bangalore-560 001. KARNATAKA.
26	Shri. Kundan Kumar Junior Clerk	5200-20200+1900 Rs. 14897/-	Office of the Welfare & Cess Commissioner, Ministry of Labour & Employment, Labour Welfare Organisation, 6/7/12, Crescent Road Cross, K.P. East, Bangalore-560 001. KARNATAKA.
27	Shri. N. Nanjundappa Daftry	5200-20200+2400 Rs. 25633/-	Office of the Welfare & Cess Commissioner, Ministry of Labour & Employment, Labour Welfare Organisation, 6/7/12, Crescent Road Cross, K.P. East, Bangalore-560 001. KARNATAKA.
28	Shri. G. Gurumurthy Peon	5200-20200+2400 Rs. 24659/-	Office of the Welfare & Cess Commissioner, Ministry of Labour & Employment, Labour Welfare Organisation, 6/7/12, Crescent Road Cross, K.P. East, Bangalore-560 001. KARNATAKA.
29	Shri. B.L. Channakeshava Peon	5200-20200+2000 Rs. 22117/-	Office of the Welfare & Cess Commissioner, Ministry of Labour & Employment, Labour Welfare Organisation, 6/7/12, Crescent Road Cross, K.P. East, Bangalore-560 001. KARNATAKA.

30	Shri. C. Kuppan Chowkidar	5200-20200+2400 Rs. 27546/-	Office of the Welfare & Cess Commissioner, Ministry of Labour & Employment, Labour Welfare Organisation, 6/7/12, Crescent Road Cross, K.P. East, Bangalore-560 001. KARNATAKA.
31	Smt. Leelamma Sweeper	5200-20200+2000 Rs. 22658/-	Office of the Welfare & Cess Commissioner, Ministry of Labour & Employment, Labour Welfare Organisation, 6/7/12, Crescent Road Cross, K.P. East, Bangalore-560 001. KARNATAKA.
32	Dr. Parameshwar Naik, Supertime Administrative Grade	37400-67000+10000 Rs. 130875/-	Beedi Workers Welfare Fund Static Dispensary 1493,Abidpur Mohalla BM Road, Cross, Daira, CHANNAPATNA-571501.
33	Dr. U.C.S. Biradar, Supertime Administrative Grade	37400-67000+10000 Rs. 139790/-	Beedi Workers Welfare Fund Static Dispensary No.4-12-93(Ground Floor) Near Kalyana Mntapa YADGIR-585201
34	Dr. Y. Jayaram, Supertime Administrative Grade	37400-67000+10000 Rs. 130275/-	Beedi Workers Welfare Fund Static Dispensary Old Hospital Road, Assar Mohalla, SIRA TOWN-572137
35	Dr. N. Ramana Goud, Supertime Administrative Grade	37400-67000+10000 Rs. 119578/-	Iron/Manganese/Chrome Ore Mines Labour Welfare Organisation Mobile Medical Unit, PO KARIGANUR-583223 HOSPET TQ BELLARY DIST
36	Dr. P. Ramakrishna Bhat Supertime Administrative Grade	37400-67000+10000 Rs. 127886/-	Beedi Workers Welfare Fund Static Dispensary, Sri Vinayaka Complex,

			1 st Floor, Main Road, PO Kinnikambla, KAIKAMBA-574151
37	Dr. B. Chandrahas, Chief Medical Officer (NFSG)	37400-67000+8700 Rs. 120657/-	Beedi Workers Welfare Organization CentralHospital Kalyanagiri Nagar, Mahadevapura Road, MYSORE-570019
38	Dr. B. Lathakumari, Chief Medical Officer (NFSG)	37400-67000+8700 Rs. 112944/-	Beedi Workers Welfare Organization CentralHospital Kalyanagiri Nagar, Mahadevapura Road, MYSORE-570019
39	Dr. H.S. Prasanna, Chief Medical Officer (NFSG)	37400-67000+8700 Rs. 104691/-	Beedi Workers Welfare Organization CentralHospital Kalyanagiri Nagar, Mahadevapura Road, MYSORE-570019
40	Dr. A. Nalini Eswari, Chief Medical Officer (NFSG)	37400-67000+8700 Rs. 117939/-	Beedi Workers Welfare Fund Static-cum-Mobile Dispensary 1905, Kutub Gori Mohalla KG Nagar KOLAR-563101
41	Dr. B.K. Ganesh Rao, Chief Medical Officer (NFSG)	37400-67000+8700 Rs. 117838/-	Beedi Workers Welfare Fund Static-cum-Mobile Dispensary Building No.69-1(B), 1 st Floor Chiranjeevi Towers DERLAKATTE PO575018 Mangalore Taluk
42	Dr. C. Basavanna, Chief Medical Officer (NFSG)	37400-67000+8700 Rs. 108118/-	Beedi Workers Welfare Fund Static-cum-Mobile Dispensary, THUMBE-574143 VIA FARANGIPET
43	Dr. Y.H. Satheesh, Chief Medical Officer	15600-39100+7600 Rs. 88602/-	Office of the Welfare & Cess Commissioner, Ministry of Labour & Employment,

			Labour Welfare Organisation, 6/7/12, Crescent Road Cross, K.P. East, Bangalore-560 001. KARNATAKA.
44	Shri. N.K.Devarajan Asst. Engineer	15600-39100+6600 Rs. 45670/-	Beedi Workers Welfare Organization CentralHospital Kalyanagiri Nagar, Mahadevapura Road, MYSORE-570019
45	Smt. R. Rekha, Staff Nurse	9300-34800+4800 Rs. 41315/-	Beedi Workers Welfare Fund Static-cum-Mobile Dispensary No.23/1, Vinayaka Nagar 3 rd Cross, Old Guddadahalli Mysore Road Bangalore-560026
46	Smt.A.C.Parimala, Staff Nurse	9300-34800+5400 Rs. 46980/-	Beedi Workers Welfare Fund Static Dispensary Plot No.B 595/564 1 st Floor, MPS Complex Ward No.12, Car Street CHAMARAJANAGAR- 571313
47	Smt. Suguna Nagappa, Staff Nurse	9300-34800+5400 Rs. 46320/-	Beedi Workers Welfare Fund Static Dispensary 1493,Abidpur Mohalla BM Road, Cross, Daira, CHANNAPATNA-571501.
48	Smt. K. Ushalatha, Staff Nurse	9300-34800+5400 Rs. 44323/-	Beedi Workers Welfare Fund Static-cum-Mobile Dispensary Building No.69-1(B), 1 st Floor ChiranjeeviTowers DERLAKATTE PO575018 Mangalore Taluk
49	Smt. G. Ammini, Staff Nurse	9300-34800+4800 Rs. 40249/-	Beedi Workers Welfare Fund Static Dispensary

			41/125,Murthy Nilaya, Vijaya Extension, GUNDLUPET-571111
50	Smt. M.H. Banakar, Staff Nurse	9300-34800+5400 Rs. 55930/-	Beedi Workers Welfare Fund Static Dispensary, RM Chatni's Building, PB Road, HUBLI-580024
51	Smt. Sujatha, Staff Nurse	9300-34800+4600 Rs. 35522/-	Beedi Workers Welfare Fund Static Dispensary, Sri Vinayaka Complex, 1 st Floor, Main Road, PO Kinnikambla, KAIKAMBA-574151
52	Smt. Sangeetha, Staff Nurse	9300-34800+4800 Rs. 36512/-	Beedi Workers Welfare Fund Static-cum-Mobile Dispensary BharathPlaza,(Near Vijaya Bank) NH-48, KALLADKA-574222
53	Smt. J.Uma, Staff Nurse	9300-34800+4800 Rs. 40378/-	Beedi Workers Welfare Fund Static-cum-Mobile Dispensary 1905, Kutub Gori Mohalla KG Nagar KOLAR-563101
54	Smt. J. Revathi, Staff Nurse	9300-34800+4600 Rs. 38994/-	LSD/Beedi Workers Welfare Fund Static Cum Mobile Dispensary ChakalabbiBuilding Kadara Koppa Road LOKAPUR-587122 Mudhul Tq. Bagalkot Dist.
55	Smt. Rosy D'Souza, Staff Nurse	9300-34800+5400 Rs. 46320/-	Beedi Workers Welfare Fund Static-cum-Mobile Dispensary, No.10236, Veera Nilaya, Jyothinagar MOODABIDRI-574227
56	Smt. P.K. Saraswathi, Staff Nurse	9300-34800+5400 Rs. 44257/-	Beedi Workers Welfare Organization CentralHospital

			Kalyanagiri Nagar, Mahadevapura Road, MYSORE-570019
57	Smt. B.S. Mahadevamma, Staff Nurse	9300-34800+4800 Rs. 33989/-	Beedi Workers Welfare Organization CentralHospital Kalyanagiri Nagar, Mahadevapura Road, MYSORE-570019
58	Smt. D. Sonia, Staff Nurse	9300-34800+4800 Rs. 33989/-	Beedi Workers Welfare Organization CentralHospital Kalyanagiri Nagar, Mahadevapura Road, MYSORE-570019
59	Smt. G.L. Lakshmi, Staff Nurse	9300-34800+4800 Rs. 35031/-	Beedi Workers Welfare Organization CentralHospital Kalyanagiri Nagar, Mahadevapura Road, MYSORE-570019
60	Smt. Gange Bhat, Staff Nurse	9300-34800+4800 Rs. 34967/-	Beedi Workers Welfare Organization CentralHospital Kalyanagiri Nagar, Mahadevapura Road, MYSORE-570019
61	Smt. Sanjeev Kumar Pawar, Staff Nurse	9300-34800+4800 Rs. 34517/-	Beedi Workers Welfare Organization CentralHospital Kalyanagiri Nagar, Mahadevapura Road, MYSORE-570019
62	Kum. V. Geethalakshmi, Staff Nurse	9300-34800+4600 Rs. 33505/-	Beedi Workers Welfare Organization CentralHospital Kalyanagiri Nagar, Mahadevapura Road, MYSORE-570019
63	Smt. M. Kavitha, Staff Nurse	9300-34800+4800 Rs. 36538/-	Beedi Workers Welfare Organization, CentralHospital, Kalyanagiri Nagar, Mahadevapura Road, MYSORE-570019
64	Smt. Merlin Rose,	9300-34800+4800	Beedi Workers Welfare

	Staff Nurse	Rs. 34967/-	Organization CentralHospital Kalyanagiri Nagar, Mahadevapura Road, MYSORE-570019
65	Smt. Mangala.T. Pagad, Staff Nurse	9300-34800+4800 Rs. 39718/-	Beedi Workers Welfare Fund Static-cum-Mobile Dispensary No.153, KaziBuilding, Ashoknagar NIPPANI-591237
66	Smt. S.G. Meenakshi, Staff Nurse	9300-34800+5400 Rs. 51918/-	Beedi Workers Welfare Fund Static Dispensary Old Hospital Road, Assar Mohalla, SIRA TOWN-572137
67	Smt. M. Rajeevi, Staff Nurse	9300-34800+4800 RS. 40378/-	Beedi Workers Welfare Fund Static-cum-Mobile Dispensary, THUMBE-574143 VIA FARANGIPET
68	Smt. B. Jayamma, Staff Nurse	9300-34800+5400 Rs. 52318/-	Beedi Workers Welfare Fund Static cum Mobile Dispensary No.3048, Shiva Nilaya, 4th Main Road, Gandhinagar, Tilak Park Police Station Road, TUMKUR-572102
69	Smt. M.R. Surekha, Staff Nurse	9300-34800+4800 Rs. 37125/-	Beedi Workers Welfare Fund Static-cum-Mobile Dispensary No.9-45,B 6(1) 1st Floor, SujathaBuilding,Ambagilu, UDUPI-576105
70	Smt. Sudha, Staff Nurse	9300-34800+4600 Rs. 33809/-	Beedi Workers Welfare Fund Static Dispensary No.4-12-93(Ground Floor) Near Kalyana Mntapa YADGIR-585201
71	Smt. A.K. Sakamma, Staff Nurse	9300-34800+5400 Rs. 49902/-	Iron/Manganese/Chrome Ore Mines Static-cum-Mobile Dispensary No.3, KHB Colony,

			Cantonment BELLARY-583104
72	Smt. S. Rathnammal, Staff Nurse	9300-34800+5400 Rs. 45015/-	Beedi Workers Welfare Fund Static-cum-Mobile Dispensary, 92/1, Ward No.1, Bellary Road, SANDUR-583119
73	Kum. B. Lavanya Pharmacist	5200-20200+2800 Rs. 23736/-	Office of the Welfare & Cess Commissioner, Ministry of Labour & Employment, Labour Welfare Organisation, 6/7/12, Crescent Road Cross, K.P. East, Bangalore-560 001. KARNATAKA.
74	Shri. A. Shivakumar, Pharmacist	9300-34800+4200 Rs. 29692/-	Beedi Workers Welfare Fund Static cum Mobile Dispensary No.3048, Shiva Nilaya, 4th Main Road, Gandhinagar, Tilak Park Police Station Road, TUMKUR-572102
75	Shri. S. Ravindran, Pharmacist	9300-34800+4800 Rs. 36696/-	Beedi Workers Welfare Fund Static Dispensary Plot No.B 595/564 1 st Floor, MPS Complex Ward No.12, Car Street CHAMARAJANAGAR- 571313
76	Shri. Satyanarayana shetty, Pharmacist	9300-34800+4800 Rs. 38234/-	Beedi Workers Welfare Fund Static Dispensary 1493,Abidpur Mohalla BM Road, Cross, Daira, CHANNAPATNA-571501.
77	Shri. Ganesh Pai Gardi, Pharmacist	9300-34800+4600 Rs. 37720/-	Beedi Workers Welfare Fund Static Dispensary Sri Maruthi Devastan Trust Committee Line Bazaar, DHARWAD-580001
78	Shri. Shakeel Ahmed, Pharmacist	9300-34800+4600 Rs. 34643/-	Beedi Workers Welfare Fund Static Dispensary

			41/125,Murthy Nilaya, Vijaya Extension, GUNDLUPET-571111
79	Shri. P. S. Rajashekar, Pharmacist	9300-34800+4600 Rs. 35054/-	Beedi Workers Welfare Fund Static Cum-Mobile Dispensary Ananda Mandiram, 1 st Floor Near SSK Kalyan Mantap HARIHAR-577601
80	Shri. J.R. Gottur, Pharmacist	9300-34800+4600 Rs. 37720/-	Beedi Workers Welfare Fund Static Dispensary, RM Chatni's Building, PB Road, HUBLI-580024
81	Shri. B. Sampath Kumar, Pharmacist	9300-34800+4200 Rs. 28807/-	Beedi Workers Welfare Fund Static Dispensary, Sri Vinayaka Complex, 1 st Floor, Main Road, PO Kinnikambla, KAIKAMBA-574151
82	Shri. Mohandas Shenoy, Pharmacist	9300-34800+4600 Rs. 35601/-	Beedi Workers Welfare Fund Static-cum-Mobile Dispensary 1 st Floor, Kaushik Pinnacle, Near Taluk Office KARKALA-574104 UDUPI DISTRICT
83	Shri. Rajendra.U.Hoskote, Pharmacist	9300-34800+4600 Rs. 36540/-	Beedi workers Welfare fund Static-cum-Mobile Dispensary Site No.145,5 th Block Bldg No.5-153A KATIPALLA 575030
84	Shri. N. Subramanian, Pharmacist	9300-34800+4600 Rs. 35851/-	Beedi Workers Welfare Fund Static-cum-Mobile Dispensary 1905, Kutub Gori Mohalla KG Nagar KOLAR-563101
85	Shri. Jairam Chawan, Pharmacist	9300-34800+4600 Rs. 35601/-	LSD/Beedi Workers Welfare Fund Static Cum Mobile Dispensary ChakalabbiBuilding Kadara Koppa Road LOKAPUR-587122

			Mudhul Tq. Bagalkot Dist.
86	Shri. B. Srinivas, Pharmacist	9300-34800+4200 Rs. 30900/-	Beedi Workers Welfare Fund Static-cum-Mobile Dispensary, No.10236, Veera Nilaya, Jyothinagar MOODABIDRI-574227
87	Shri. Badrinath Bidi, Pharmacist	9300-34800+4800 Rs. 36610/-	Beedi Workers Welfare Organization CentralHospital Kalyanagiri Nagar, Mahadevapura Road, MYSORE-570019
88	Shri. V. Chandrashekar, Pharmacist	9300-34800+4800 Rs. 35515/-	Beedi Workers Welfare Organization CentralHospital Kalyanagiri Nagar, Mahadevapura Road, MYSORE-570019
89	Shri. K.S. Jeevendra Kumar, Pharmacist	9300-34800+4800 Rs. 34451/-	Beedi Workers Welfare Organization CentralHospital Kalyanagiri Nagar, Mahadevapura Road, MYSORE-570019
90	Shri. H.N. Parthasarathy, Lab Technician	9300-34800+4600 Rs. 33673/-	Beedi Workers Welfare Organization CentralHospital Kalyanagiri Nagar, Mahadevapura Road, MYSORE-570019
91	Shri. G.K. Dattatreya, Radiographer	9300-34800+4200 Rs. 29438/-	Beedi Workers Welfare Organization CentralHospital Kalyanagiri Nagar, Mahadevapura Road, MYSORE-570019
92	Shri. H. Rama, O.T. Assistant	5200-20200+2000 Rs. 17833/-	Beedi Workers Welfare Organization CentralHospital Kalyanagiri Nagar, Mahadevapura Road, MYSORE-570019
93	Shri. Nandakumar Janawade, Pharmacist	9300-34800+4600 Rs. 35054/-	Beedi Workers Welfare Fund Static-cum-Mobile Dispensary

			No.153, KaziBuilding, Ashoknagar NIPPANI-591237
94	Shri. Ramakrishna Nayak, Pharmacist	9300-34800+4600 Rs. 37720/-	Beedi Workers Welfare Fund Mobile Medical Unit, No.1-53/12(1), Darbar Hill, PADIL-575007 S.K.DISTRICT
95	Shri. U.G. Narasimha, Pharmacist	9300-34800+4600 Rs. 35601/-	Beedi Workers Welfare Fund Static-cum-Mobile Dispensary, MasjidBuilding, 1st Floor, PUTTUR-574201
96	Shri. C. Anantha Goud, Pharmacist	9300-34800+4200 Rs. 31254/-	Beedi Workers Welfare Fund Static Dispensary Old Hospital Road, Assar Mohalla, SIRA TOWN-572137
97	Shri. C.H. Surendra, Pharmacist	9300-34800+4600 Rs. 34890/-	Beedi Workers Welfare Fund Static-cum-Mobile Dispensary, THUMBE-574143 VIA FARANGIPET
98	Shri. Devendra Prabhu, Pharmacist	9300-34800+4600 Rs. 35851/-	Beedi Workers Welfare Fund Static-cum-Mobile Dispensary No.9-45,B 6(1) 1st Floor, SujathaBuilding,Ambagilu, UDUPI-576105
99	Shri. D.C. Suresh Pharmacist	9300-34800+4200 Rs. 28807/-	Beedi Workers Welfare Fund Static-cum-Mobile Dispensary, Rajadhani Complex,NH 48 UPPINANGADY-574241
100	Shri. M. Subramanya, Pharmacist	9300-34800+4600 Rs. 35601/-	Beedi Workers Welfare Fund Static-cum-Mobile Dispensary, CanaraBankBuilding Near Bus Stand, VAMADAPADAVU- 574324
101	Shri. Venkatesh, Pharmacist	9300-34800+4200 Rs. 28807/-	Beedi Workers Welfare Fund Static Dispensary No.4-12-93(Ground Floor) Near Kalyana Mntapa YADGIR-585201

102	Shri. K.P. Shanthamurthy, Pharmacist	9300-34800+4800 Rs. 34798/-	Iron/Manganese/Chrome Ore Mines Labour Welfare Organisation Mobile Medical Unit, PO KARIGANUR-583223 HOSPET TQ BELLARY DIST
103	Shri. Ranjith.T, Pharmacist	5200-20200+2800 Rs. 21423/-	Iron/Manganese/Chrome Ore Mines Static-cum-Mobile Dispensary No.3, KHB Colony, Cantonment BELLARY-583104
104	Shri. Bandayya, Pharmacist	9300-34800+4200 Rs. 28807/-	Beedi Workers Welfare Fund Static-cum-Mobile Dispensary, 92/1, Ward No.1, Bellary Road, SANDUR-583119
105	Shri. Shrikanth Rathod Driver	5200-20200+1900 Rs. 16279/-	Office of the Welfare & Cess Commissioner, Ministry of Labour & Employment, Labour Welfare Organisation, 6/7/12, Crescent Road Cross, K.P. East, Bangalore-560 001. KARNATAKA.
106	Shri. P. Rangaswamy, Driver	5200-20200+2400 Rs. 22330/-	Beedi Workers Welfare Fund Static-cum-Mobile Dispensary No.23/1, Vinayaka Nagar 3 rd Cross, Old Guddadahalli Mysore Road Bangalore-560026
107	Shri. Ravindra Kumar, Driver	5200-20200+2800 Rs. 24273/-	Beedi Workers Welfare Fund Static Cum-Mobile Dispensary Ananda Mandiram, 1 st Floor Near SSK Kalyan Mantap HARIHAR-577601
108	Shri. N. Nagesh Kumar, Driver	5200-20200+2800 Rs. 24419/-	Beedi Workers Welfare Fund Static-cum-Mobile Dispensary

			BharathPlaza,(Near Vijaya Bank) NH-48, KALLADKA-574222
109	Shri. Ramanna Kadiyavar, Driver	5200-20200+1900 Rs. 14428/-	Beedi Workers Welfare Fund Static-cum-Mobile Dispensary 1 st Floor, Kaushik Pinnacle Near Taluk Office KARKALA-574104 UDUPI DISTRICT
110	Shri. K.P. Sathish, Driver	5200-20200+1900 Rs. 17776/-	Beedi workers Welfare fund Static-cum-Mobile Dispensary Site No.145,5 th Block Bldg No.5-153A KATIPALLA 575030
111	Shri. J. Aswathaiah, Driver	5200-20200+2800 Rs. 24419/-	Beedi Workers Welfare Fund Static-cum-Mobile Dispensary 1905, Kutub Gori Mohalla KG Nagar KOLAR-563101
112	Shri. E. Narayana, Driver	9300-34800+4200 Rs. 30788/-	LSD/Beedi Workers Welfare Fund Static Cum Mobile Dispensary ChakalabbiBuilding Kadara Koppa Road LOKAPUR-587122 Mudhul Tq. Bagalkot Dist.
113	Shri. K.D. Krishne Gowda, Driver	5200-20200+1900 Rs. 17029/-	Beedi Workers Welfare Fund Static-cum-Mobile Dispensary, No.10236, Veera Nilaya, Jyothinagar MOODABIDRI- 574227
114	Shri. A.N. Ramesh Rao, Driver	5200-20200+2400 Rs. 20308/-	Beedi Workers Welfare Organization CentralHospital Kalyanagiri Nagar, Mahadevapura Road, MYSORE-570019
115	Shri. B. Seenappa, Driver	5200-20200+2400 Rs. 20747/-	Beedi Workers Welfare Organization

			Central Hospital Kalyanagiri Nagar, Mahadevapura Road, MYSORE-570019
116	Shri. B.N. Sonawane, Driver	5200-20200+1900 Rs. 16754/-	Beedi Workers Welfare Fund Static-cum-Mobile Dispensary No.153, Kazi Building, Ashoknagar NIPPANI-591237
117	Shri. B. Sundara, Driver	5200-20200+2800 Rs. 27665/-	Beedi Workers Welfare Fund Mobile Medical Unit, No.1-53/12(1), Darbar Hill, PADIL-575007 S.K.DISTRICT
118	Shri. Divakara Sapalya, Driver	5200-20200+2800 Rs. 24209/-	Beedi Workers Welfare Fund Static-cum-Mobile Dispensary, Masjid Building, 1st Floor, PUTTUR-574201
119	Shri. R.Yogesh, Driver	5200-20200+1900 Rs. 14428/-	Beedi Workers Welfare Fund Static-cum-Mobile Dispensary, THUMBE-574143 VIA FARANGIPET
120	Shri. R.N. Rajanna, Driver	5200-20200+2800 Rs. 24273/-	Beedi Workers Welfare Fund Static cum Mobile Dispensary No.3048, Shiva Nilaya, 4th Main Road, Gandhinagar, Tilak Park Police Station Road, TUMKUR-572102
121	Shri. K.R. Ananda, Driver	5200-20200+1900 Rs. 14428/-	Beedi Workers Welfare Fund Static-cum-Mobile Dispensary, Canara Bank Building Near Bus Stand, VAMADAPADAVU- 574324
122	Shri. K. Sudharshan, Driver	5200-20200+2800 Rs. 22860/-	Iron/Manganese/Chrome Ore Mines Labour Welfare Organisation Mobile Medical Unit,

			PO KARIGANUR-583223 HOSPET TQ BELLARYDIST
123	Shri. S. Gangadhara, Driver	5200-20200+2400 Rs. 18944/-	Iron/Manganese/Chrome Ore Mines Static-cum-Mobile Dispensary No.3, KHB Colony, Cantonment BELLARY-583104
124	Shri. B. Thippaganaik, Driver	5200-20200+2800 Rs. 26134/-	Beedi Workers Welfare Fund Static-cum-Mobile Dispensary, 92/1, Ward No.1, Bellary Road, SANDUR-583119
125	Shri. Pushparaj Driver	5200-20200+1900 Rs. 17029/-	Beedi Workers Welfare Fund Static-cum-Mobile Dispensary No.9-45,B 6(1) 1st Floor, SujathaBuilding,Ambagilu, UDUPI-576105
126	Shri. C.H. Ishwar Naik Driver	9300-34800+4200 Rs. 30337/-	Beedi Workers Welfare Fund Static-cum-Mobile Dispensary, Rajadhani Complex,NH48 UPPINANGADY-574241
127	Shri. K.S. Shivarudraiah, Dresser-cum-Attendant	5200-20200+2400 Rs. 25309/-	Beedi Workers Welfare Fund Static-cum-Mobile Dispensary No.23/1, Vinayaka Nagar 3 rd Cross, Old Guddadahalli Mysore Road Bangalore-560026
128	Shri. Rajanna, Dresser-cum-Attendant	5200-20200+2000 Rs. 19573/-	Beedi Workers Welfare Fund Static Dispensary Plot No.B 595/564 1 st Floor, MPS Complex Ward No.12, Car Street CHAMARAJANAGAR- 571313
129	Shri. Govindaiah, Dresser-cum-Attendant	5200-20200+2000 Rs. 23011/-	Beedi Workers Welfare Fund Static Dispensary, RM Chatni's Building, PB Road, HUBLI-580024

130	Shri. Mohan Naiker, Dresser-cum-Attendant	5200-20200+2000 Rs. 18541/-	Beedi Workers Welfare Fund Static-cum-Mobile Dispensary Building No.69-1(B), 1 st Floor Chiranjeevi Towers DERLAKATTE PO575018 Mangalore Taluk
131	Shri. S. Rangaswamy, Dresser-cum-Attendant	5200-20200+2000 Rs. 18525/-	Beedi Workers Welfare Fund Static Dispensary 41/125, Murthy Nilaya, Vijaya Extension, GUNDLUPET-571111
132	Shri. M.P. Nagesh, Dresser-cum-Attendant	5200-20200+1900 Rs. 17537/-	Beedi Workers Welfare Fund Static Cum-Mobile Dispensary Ananda Mandiram, 1 st Floor Near SSK Kalyan Mantap HARIHAR-577601
133	Shri. H. Ramashetty, Dresser-cum-Attendant	5200-20200+2400 Rs. 21424/-	Beedi Workers Welfare Fund Static Dispensary 1493, Abidpur Mohalla BM Road, Cross, Daira, CHANNAPATNA-571501.
134	Shri. G.K. Lakshmana, Dresser-cum-Attendant	5200-20200+2400 Rs. 21472/-	Beedi Workers Welfare Fund Static Dispensary, Sri Vinayaka Complex, 1 st Floor, Main Road, PO Kinnikambla, KAIKAMBA-574151
135	Shri. K. Shanthappa, Dresser-cum-Attendant, Thumbe	5200-20200+2000 Rs. 18735/-	Beedi Workers Welfare Fund Static-cum-Mobile Dispensary Bharath Plaza, (Near Vijaya Bank) NH-48, KALLADKA-574222
136	Shri. K. Gopala, Dresser-cum-Attendant	5200-20200+2400 Rs. 22410/-	Beedi workers Welfare fund Static-cum-Mobile Dispensary Site No.145, 5 th Block Bldg No.5-153A KATIPALLA 575030
137	Shri. N.S. Dinesh, Dresser-cum-Attendant	5200-20200+1900 Rs. 19464/-	Beedi Workers Welfare Fund Static-cum-Mobile Dispensary

			1905, Kutub Gori Mohalla KG Nagar KOLAR-563101
138	Shri. E. Das Dresser-cum-Attendant	5200-20200+2000 Rs. 19573/-	LSD/Beedi Workers Welfare Fund Static Cum Mobile Dispensary Chakalabbi Building Kadara Koppa Road LOKAPUR-587122 Mudhul Tq. Bagalkot Dist.
139	Shri. Marigooli, Dresser-cum-Attendant	5200-20200+2000 Rs. 18105/-	Beedi Workers Welfare Organization Central Hospital Kalyanagiri Nagar, Mahadevapura Road, MYSORE-570019
140	Shri. Deepak Lavania, Dresser-cum-Attendant	5200-20200+1900 Rs. 14675/-	Beedi Workers Welfare Organization Central Hospital Kalyanagiri Nagar, Mahadevapura Road, MYSORE-570019
141	Shri. Somashekara babu, Dresser-cum-Attendant	5200-20200+1900 Rs. 17189/-	Beedi Workers Welfare Fund Static-cum-Mobile Dispensary No.153, Kazi Building, Ashoknagar NIPPANI-591237
142	Shri. Balakrishna shetty, Dresser-cum-Attendant	5200-20200+2000 Rs. 19798/-	Beedi Workers Welfare Fund Mobile Medical Unit, No.1-53/12(1), Darbar Hill, PADIL-575007 S.K.DISTRICT
143	Shri. Sanjeeva Naik, Dresser-cum-Attendant	5200-20200+2000 Rs. 18751/-	Beedi Workers Welfare Fund Static-cum-Mobile Dispensary, Masjid Building, 1st Floor, PUTTUR-574201
144	Shri. R. Srinivas, Dresser-cum-Attendant	5200-20200+2400 Rs. 21617/-	Beedi Workers Welfare Fund Static Dispensary Old Hospital Road, Assar Mohalla, SIRA TOWN-572137
145	Shri. S. Ananda, Dresser-cum-Attendant	5200-20200+1900 Rs. 16382/-	Beedi Workers Welfare Fund Static cum Mobile

			Dispensary No.3048, Shiva Nilaya, 4th Main Road, Gandhinagar, Tilak Park Police Station Road, TUMKUR-572102
146	Shri. Pitambar Mahakud, Dresser-cum-Attendant	5200-20200+1900 Rs. 16382/-	Beedi Workers Welfare Fund Static-cum-Mobile Dispensary, CanaraBankBuilding Near Bus Stand, VAMADAPADAVU- 574324
147	Smt. Saritha, Dresser-cum-Attendant	5200-20200+1900 Rs. 15407/-	Beedi Workers Welfare Fund Static Dispensary No.4-12-93(Ground Floor) Near Kalyana Mntapa YADGIR-585201
148	Shri. Shyam Sundar, Dresser-cum-Attendant	5200-20200+2000 Rs. 18105/-	Iron/Manganese/Chrome Ore Mines Labour Welfare Organisation Mobile Medical Unit, PO KARIGANUR-583223 HOSPET TQ BELLARY DIST
149	Shri. Bheema Rao, Dresser-cum-Attendant	5200-20200+2000 Rs. 19363/-	Iron/Manganese/Chrome Ore Mines Static-cum-Mobile Dispensary No.3, KHB Colony, Cantonment BELLARY-583104
150	Shri. Narasimhamurthy, Chowkidar	5200-20200+2000 Rs. 21944/-	Beedi Workers Welfare Fund Static-cum-Mobile Dispensary No.23/1, Vinayaka Nagar 3 rd Cross, Old Guddadahalli Mysore Road Bangalore-560026
151	Shri. Basavaraju, Chowkidar	5200-20200+2000 Rs. 19430/-	Beedi Workers Welfare Fund Static Dispensary Plot No.B 595/564 1 st Floor, MPS Complex Ward No.12, Car Street CHAMARAJANAGAR-

			571313
152	Shri. Chikkanna, Chowkidar	5200-20200+2000 Rs. 18592/-	Beedi Workers Welfare Fund Static Dispensary 1493,Abidpur Mohalla BM Road, Cross, Daira, CHANNAPATNA-571501.
153	Shri. B. Ramdas, Chowkidar	5200-20200+2000 Rs. 18608/-	Beedi Workers Welfare Fund Static-cum-Mobile Dispensary Building No.69-1(B), 1 st Floor Chiranjeevi Towers DERLAKATTE PO575018 Mangalore Taluk
154	Shri. E.Umapathy, Chowkidar	5200-20200+2000 Rs. 19124/-	Beedi Workers Welfare Fund Static Cum-Mobile Dispensary Ananda Mandiram, 1 st Floor Near SSK Kalyan Mantap HARIHAR-577601
155	Shri. B. Thippeswamy, Chowkidar	5200-20200+2000 Rs. 19430/-	Beedi Workers Welfare Fund Static-cum-Mobile Dispensary 1 st Floor, Kaushik Pinnacle, Near Taluk Office KARKALA-574104 UDUPI DISTRICT
156	Shri. G.Yesudas, Chowkidar	5200-20200+2000 Rs. 20545/-	Beedi workers Welfare fund Static-cum-Mobile Dispensary Site No.145,5 th Block Bldg No.5-153A KATIPALLA 575030
157	Shri. Shiva Rao, Chowkidar	5200-20200+2000 Rs. 18398/-	Beedi Workers Welfare Fund Static-cum-Mobile Dispensary 1905, Kutub Gori Mohalla KG Nagar KOLAR-563101
158	Shri. K.N. Teekaram, Chowkidar	5200-20200+1900 Rs. 16427/-	Beedi Workers Welfare Organization Central Hospital Kalyanagiri Nagar, Mahadevapura Road, MYSORE-570019
159	Shri. P. Murthyraj,	5200-20200+2000	Beedi Workers Welfare

	Chowkidar	Rs. 18105/-	Organization CentralHospital Kalyanagiri Nagar, Mahadevapura Road, MYSORE-570019
160	Shri. Kanthappa, Chowkidar	5200-20200+2000 Rs. 20545/-	Beedi Workers Welfare Fund Mobile Medical Unit, No.1-53/12(1), Darbar Hill, PADIL-575007 S.K.DISTRICT
161	Shri. P. Seenappa Baira, Chowkidar	5200-20200+2000 Rs. 18398/-	Beedi Workers Welfare Fund Static-cum-Mobile Dispensary, Rajadhani Complex,NH 48 UPPINANGADY-574241
162	Shri. Laxman.R. Mohite, Chowkidar	5200-20200+2000 Rs. 18592/-	Beedi Workers Welfare Fund Static Dispensary No.4-12-93(Ground Floor) Near Kalyana Mntapa YADGIR-585201
163	Shri. Prahalladachar, Chowkidar	5200-20200+2400 Rs. 20549/-	Iron/Manganese/Chrome Ore Mines Labour Welfare Organisation Mobile Medical Unit, PO KARIGANUR-583223 HOSPET TQ BELLARY DIST
164	Shri. Abdul Rasool, Chowkidar	5200-20200+2000 Rs. 19445/-	Iron/Manganese/Chrome Ore Mines Static-cum-Mobile Dispensary No.3, KHB Colony, Cantonment BELLARY-583104
165	Shri. K. Sunkappa, Chowkidar	5200-20200+2000 Rs. 19445/-	Beedi Workers Welfare Fund Static-cum-Mobile Dispensary, 92/1, Ward No.1, Bellary Road, SANDUR-583119
166	Shri. Channegowda Chowkidar	5200-20200+2000 Rs. 19430/-	Beedi Workers Welfare Fund Static cum Mobile Dispensary No.3048, Shiva Nilaya, 4th Main Road, Gandhinagar,

			Tilak Park Police Station Road, TUMKUR-572102
167	Smt. Mahadevamma, Sweeper	5200-20200+2400 Rs. 21232/-	Beedi Workers Welfare Fund Static Dispensary 1493,Abidpur Mohalla BM Road, Cross, Daira, CHANNAPATNA-571501.
168	Shri. K. Gopala, Sweeper	5200-20200+2000 Rs. 18382/-	Beedi Workers Welfare Fund Static-cum-Mobile Dispensary Building No.69-1(B),1 st Floor Chiranjeevi Towers DERLAKATTE PO575018 Mangalore Taluk
169	Shri. R. Channaiah, Sweeper-cum-Chowkidar	5200-20200+1900 Rs. 17291/-	Beedi Workers Welfare Fund Static Dispensary Sri Maruthi Devastan Trust Committee Line Bazaar, DHARWAD-580001
170	Smt. Baby, Sweeper	5200-20200+2000 Rs. 19220/-	Beedi Workers Welfare Fund Static Dispensary 41/125,Murthy Nilaya, Vijaya Extension, GUNDLUPET-571111
171	Shri. L.R. Bhandari, Sweeper	5200-20200+2000 Rs. 20545/-	Beedi Workers Welfare Fund Static Dispensary, RM Chatni's Building, PB Road, HUBLI-580024
172	Shri. P. Kalimuthu, Sweeper	5200-20200+2000 Rs. 20688/-	Beedi workers Welfare fund Static-cum-Mobile Dispensary Site No.145,5 th Block Bldg No.5-153A KATIPALLA 575030
173	Shri. Aswathnarayana, Sweeper	5200-20200+1900 Rs. 15417/-	Beedi Workers Welfare Organization CentralHospital Kalyanagiri Nagar, Mahadevapura Road, MYSORE-570019
174	Smt. P. Shivamma, Sweeper	5200-20200+2000 Rs. 17334/-	Beedi Workers Welfare Organization CentralHospital

			Kalyanagiri Nagar, Mahadevapura Road, MYSORE-570019
175	Smt. Sanjeevamma, Sweeper	5200-20200+2000 Rs. 18105/-	Beedi Workers Welfare Organization CentralHospital Kalyanagiri Nagar, Mahadevapura Road, MYSORE-570019
176	Smt. Girija Sweeper	5200-20200+2000 Rs. 19430/-	Beedi Workers Welfare Fund Static-cum-Mobile Dispensary, MasjidBuilding, 1st Floor, PUTTUR-574201
177	Smt. Gangalakshamma, Sweeper	5200-20200+1900 Rs. 17207/-	Beedi Workers Welfare Fund Static Dispensary Old Hospital Road, Assar Mohalla, SIRA TOWN-572137
178	Smt. V. Rukmini, Sweeper	5200-20200+2400 Rs. 22134/-	Beedi Workers Welfare Fund Static Dispensary No.4-12-93(Ground Floor) Near Kalyana Mntapa YADGIR-585201
179	Shri. B. Madhukar, Cook	5200-20200+2400 Rs. 20580/-	Beedi Workers Welfare Organization CentralHospital Kalyanagiri Nagar, Mahadevapura Road, MYSORE-570019
180	Smt. Parvathamma, Cook	5200-20200+1900 Rs. 15734/-	Beedi Workers Welfare Organization CentralHospital Kalyanagiri Nagar, Mahadevapura Road, MYSORE-570019
181	Smt. H.P. Sudhamani, Ayah	5200-20200+1900 Rs. 15734/-	Beedi Workers Welfare Organization CentralHospital Kalyanagiri Nagar, Mahadevapura Road, MYSORE-570019
182	Smt. Nagarathamma, Ayah	5200-20200+1900 Rs. 15734/-	Beedi Workers Welfare Organization CentralHospital Kalyanagiri Nagar,

			Mahadevapura Road, MYSORE-570019
183	Smt. V.Suguna, Ayah	5200-20200+2400 Rs. 20098/-	Beedi Workers Welfare Organization CentralHospital Kalyanagiri Nagar, Mahadevapura Road, MYSORE-570019
184	Shri. C.Gangadhara, Dhobi	5200-20200+1900 Rs. 16427/-	Beedi Workers Welfare Organization CentralHospital Kalyanagiri Nagar, Mahadevapura Road, MYSORE-570019
185	Shri. B.R. Mahadeva, Mali	5200-20200+1900 Rs. 16066/-	Beedi Workers Welfare Organization CentralHospital Kalyanagiri Nagar, Mahadevapura Road, MYSORE-570019
186	Shri. Shiva Singh, Ward boy	5200-20200+2400 Rs. 20232/-	Beedi Workers Welfare Organization CentralHospital Kalyanagiri Nagar, Mahadevapura Road, MYSORE-570019
187	Shri. Kemparaju, Ward boy	5200-20200+1900 Rs. 15734/-	Beedi Workers Welfare Organization CentralHospital Kalyanagiri Nagar, Mahadevapura Road, MYSORE-570019
188	Shri. B. Pampapathy, Ward boy	5200-20200+2000 Rs. 17334/-	Beedi Workers Welfare Organization CentralHospital Kalyanagiri Nagar, Mahadevapura Road, MYSORE-570019
189	Shri. N.D. Basavaraju, Peon	5200-20200+2400 Rs. 20370/-	Beedi Workers Welfare Organization CentralHospital Kalyanagiri Nagar, Mahadevapura Road, MYSORE-570019
190	Smt. Shyamala Divakaran Dresser-cum-Attendant	5200-20200+1900 Rs. 17189/-	Beedi Workers Welfare organisation

			Static-cum-mobile Dispensary Building No.V:950(Ground Floor) Near Dy.S.P.office, Court Road, ALATHUR-678541
191	Smt. N.K. Sarala bai Staff Nurse	9300-34800+5400 Rs. 47714/-	Beedi Workers Welfare organisation Static-cum-mobile Dispensary Building No.V:950(Ground Floor) Near Dy.S.P.office, Court Road, ALATHUR-678541
192	Dr. P.V. Hussain Chief Medical Officer	15600-39100+7600 Rs. 76976/-	Beedi Workers Welfare Fund Static-Cum-Mobile Dispensary NO.MT-8/268,2 nd Floor Thana Post KANNUR-670012
193	Smt. M. Sharada Dresser-cum-Attendant	5200-20200+1900 Rs. 17624/-	Beedi Workers Welfare Fund Static-Cum-Mobile Dispensary NO.MT-8/268,2 nd Floor Thana Post KANNUR-670012
194	Shri. Rajesh.K Pharmacist	5200-20200+2800 Rs. 24273/-	sBeedi Workers Welfare Fund Static-Cum-Mobile Dispensary NO.MT-8/268,2 nd Floor Thana Post KANNUR-670012
195	Shri. Ranjith. P.R Pharmacist	5200-20200+2800 Rs. 28001/-	Beedi Workers Welfare Fund Static Dispensary No.10A/10B-XVI Saidu Apartments, Gandhinagar Guruvayur-680101 TRICHUR DISTRICT
196	Smt. Alice.A Staff Nurse	9300-34800+5400 Rs. 44965/-	Beedi Workers Welfare Fund Static Dispensary No.10A/10B-XVI Saidu Apartments,

			Gandhinagar Guruvayur-680101 TRICHUR DISTRICT
197	Smt. N. Leela Sweeper	5200-20200+2000 Rs. 19430/-	Beedi Workers Welfare Fund Static Dispensary No.10A/10B-XVI Saidu Apartments, Gandhinagar Guruvayur-680101 TRICHUR DISTRICT
198	Shri. Hentry. T.B Dresser-cum-Attendant	5200-20200+1900 Rs. 17834/-	Beedi Workers Welfare Fund Static-cum-Mobile Dispensary PO-Adkatbail KASARAGOD-670121
199	Shri. Rama Naik Driver	5200-20200+2800 Rs. 24724/-	Beedi Workers Welfare Fund Static-cum-Mobile Dispensary PO-Adkatbail KASARAGOD-670121
200	Shri. V. Habeeb Pharmacist	9300-34800+4600 Rs. 37984/-	Beedi Workers Welfare Fund Static-cum-Mobile Dispensary PO-Adkatbail KASARAGOD-670121
201	Smt.N.M. Geetha Staff Nurse	9300-34800+5400 Rs. 43855/-	Beedi Workers Welfare Fund Static-cum-Mobile Dispensary PO-Adkatbail KASARAGOD-670121
202	Shri. K. Giresshan Sweeper	5200-20200+2000 Rs. 18882/-	Beedi Workers Welfare Fund Static-cum-Mobile Dispensary PO-Adkatbail KASARAGOD-670121
203	Dr. Alimanikfan Abdulage Chief Medical Officer	15600-39100+7600 Rs. 76976/-	Beedi Workers Welfare Fund Static Dispensary No.VIII/189,Mannaril BismiTower PO-KONDOTTY-673638 MALLAPURAM DISTRICT.
204	Smt. Sujada.C.P Dresser-cum-Attendant	5200-20200+1900 Rs. 16382/-	Beedi Workers Welfare Fund Static Dispensary No.VIII/189,Mannaril BismiTower

			PO-KONDOTTY-673638 MALLAPURAM DISTRICT.
205	Shri. P. Mohanan Pharmacist	9300-34800+4600 Rs. 36001/-	Beedi Workers Welfare Fund Static Dispensary No.VIII/189,Mannaril BismiTower PO-KONDOTTY-673638 MALLAPURAM DISTRICT.
206	Smt. B. Shylaja Staff Nurse	9300-34800+5400 Rs. 45820/-	Beedi Workers Welfare Fund Static Dispensary No.VIII/189,Mannaril BismiTower PO-KONDOTTY-673638 MALLAPURAM DISTRICT.
207	Dr. N. Udanesha Chief Medical Officer(NFSG)	37400-67000+8700 Rs. 111295/-	Beedi Workers Welfare Fund Static-Cum-Mobile Dispensary Hillside House,PO Majibail MANJESHWAR-671323 KASARAGOD DISTRICT.
208	Shri. Sumesh.K Driver	5200-20200+1900 Rs. 14428/-	Beedi Workers Welfare Fund Static-Cum-Mobile Dispensary Hillside House,PO Majibail MANJESHWAR-671323 KASARAGOD DISTRICT.
209	Kum. K. Akshatha Staff Nurse	9300-34800+4600 Rs. 33434/-	Beedi Workers Welfare Fund Static-Cum-Mobile Dispensary Hillside House,PO Majibail MANJESHWAR-671323 KASARAGOD DISTRICT.
210	Shri. Philos Kumar Driver	5200-20200+1900 Rs. 14428/-	Beedi Workers Welfare Fund Static-cum-Mobile Dispensary, No.1/31 A(Upstairs), OPP; Village Office Main Road Cross, NILESHWAR-671314 KASARAGOD DISTRICT
211	Shri. S. Santhosh Kumar Staff Nurse	9300-34800+4600 Rs. 33434/-	Beedi Workers Welfare Fund Static-cum-Mobile Dispensary,

			No.1/31 A(Upstairs), OPP; Village Office Main Road Cross, NILESHWAR-671314 KASARAGOD DISTRICT
212	Shri. K. Bharathan Sweeper	5200-20200+2000 Rs. 19220/-	Beedi Workers Welfare Fund Static-cum-Mobile Dispensary, No.1/31 A(Upstairs), OPP; Village Office Main Road Cross, NILESHWAR-671314 KASARAGOD DISTRICT
213	Shri. P. Kumaran Chowkidar	5200-20200+2400 Rs. 21296/-	Beedi Workers Welfare Fund Static-cum-Mobile Dispensary, Prabalayam, H.No.423(N 391) Melur Road Opp:Pannchayath Maidan, PALAYAD-670661
214	Shri. Baburajan.K Dresser-cum-Attendant	5200-20200+1900 Rs. 16382/-	Beedi Workers Welfare Fund Static-cum-Mobile Dispensary, Prabalayam, H.No.423(N 391) Melur Road Opp:Pannchayath Maidan, PALAYAD-670661
215	Shri. C.A. Joseph Driver	5200-20200+2400 Rs. 21101/-	Beedi Workers Welfare Fund Static-cum-Mobile Dispensary, Prabalayam, H.No.423(N 391) Melur Road Opp:Pannchayath Maidan, PALAYAD-670661
216	Shri. K.V. Krishnan Pharmacist	9300-34800+4600 Rs. 35003/-	Beedi Workers Welfare Fund Static-cum-Mobile Dispensary, Prabalayam, H.No.423(N 391) Melur Road Opp:Pannchayath Maidan, PALAYAD-670661
217	Smt. Saritha Santosh	9300-34800+4200	The Deputy Welfare

	Asst. Welfare Administrator	Rs. 21735/-	Commissioner Labour Welfare Organization MT-7/371,1 ST Floor Kannur-Tellicherry Road, Thana KANNUR-670012 KERALA
218	Shri. E. Gopi Chowkidar	5200-20200+2400 Rs. 21506/-	The Deputy Welfare Commissioner, Labour Welfare Organization MT-7/371,1 ST Floor Kannur-Tellicherry Road, Thana KANNUR-670012 KERALA
219	Shri. R. Monikantan Driver	5200-20200+1900 Rs. 14285/-	The Deputy Welfare Commissioner, Labour Welfare Organization MT-7/371,1 ST Floor Kannur-Tellicherry Road, Thana KANNUR-670012 KERALA
220	Shri. D.R.K. Rao Dy. Welfare Commissioner	15600-39100+6600 Rs. 55144/-	The Deputy Welfare Commissioner, Labour Welfare Organization MT-7/371,1 ST Floor Kannur-Tellicherry Road, Thana KANNUR-670012 KERALA
221	Shri. T. Gulam Hussain Peon	5200-20200+1900 Rs. 17288/-	The Deputy Welfare Commissioner, Labour Welfare Organization MT-7/371,1 ST Floor Kannur-Tellicherry Road, Thana KANNUR-670012 KERALA
222	Shri. D'cruz Norbert Senior Clerk	5200-20200+4200 Rs. 28138/-	The Deputy Welfare Commissioner, Labour Welfare Organization MT-7/371,1 ST Floor Kannur-Tellicherry Road, Thana KANNUR-670012

			KERALA
--	--	--	--------