

Consumer Price Index for Industrial Workers (2016=100) – May, 2022

Posted On: 30 JUN 2022 7:56PM by PIB Delhi

The Labour Bureau, an attached office of the M/o Labour & Employment, has been compiling Consumer Price Index for Industrial Workers every month on the basis of retail prices collected from 317 markets spread over 88 industrially important centres in the country. The index is compiled for 88 centres and All-India and is released on the last working day of succeeding month. The index for the month of May, 2022 is being released in this press release.

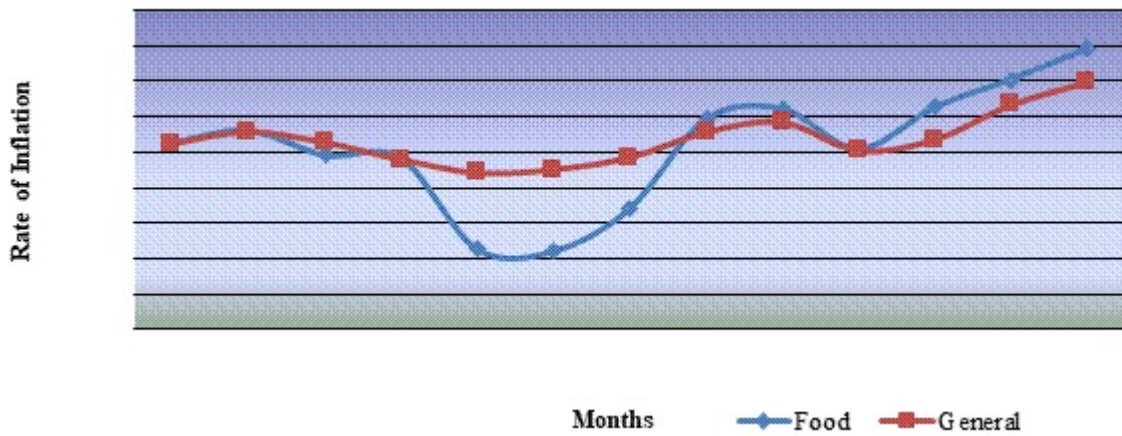
The All-India CPI-IW for May, 2022 increased by 1.3 points and stood at 129.0 (one hundred twenty nine points). On 1-month percentage change, it increased by 1.02 per cent with respect to previous month compared to an increase of 0.42 per cent recorded between corresponding months a year ago.

The maximum upward pressure in current index came from Food & Beverages group contributing 0.79 percentage points to the total change. At item level Tomato, Potato, Soyabean Oil, Sunflower Oil, Buffalo Milk, Fish Fresh, Poultry Chicken, Cooked Meal, Cooking Gas, kerosene Oil, Bus Fare, Allopathic Medicine, Telephone Charges etc. are responsible for the rise in index. However, this increase was largely checked by Onion, Bitter Guard, Lady Finger, Chilli Green, Lemon, Mango, Water Melon, Pan Leaf, Petrol for Vehicles etc. putting downward pressure on the index.

At centre level, Coimbatore recorded a maximum increase of 5.2 points followed by Salem and Jalandhar with 4.8 and 4.2 points respectively. Among others, 6 centres recorded increase between 3 to 3.9 points, 19 centres between 2 to 2.9 points, 22 centres between 1 to 1.9 points and 24 centres between 0.1 to 0.9 points. On the contrary, Yamunanagar recorded a maximum decrease of 1.5 points followed by Delhi with 1.2 points. Among others, 9 centers recorded decrease between 0.1 to 0.9 points. Rest of 3 centres' indices remained stationary.

Year-on-year inflation for the month stood at 6.97 per cent compared to 6.33 per cent for the previous month and 5.25 per cent during the corresponding month a year before. Similarly, Food inflation stood at 7.92 per cent against 7.05 per cent of the previous month and 5.26 per cent during the corresponding month a year ago.

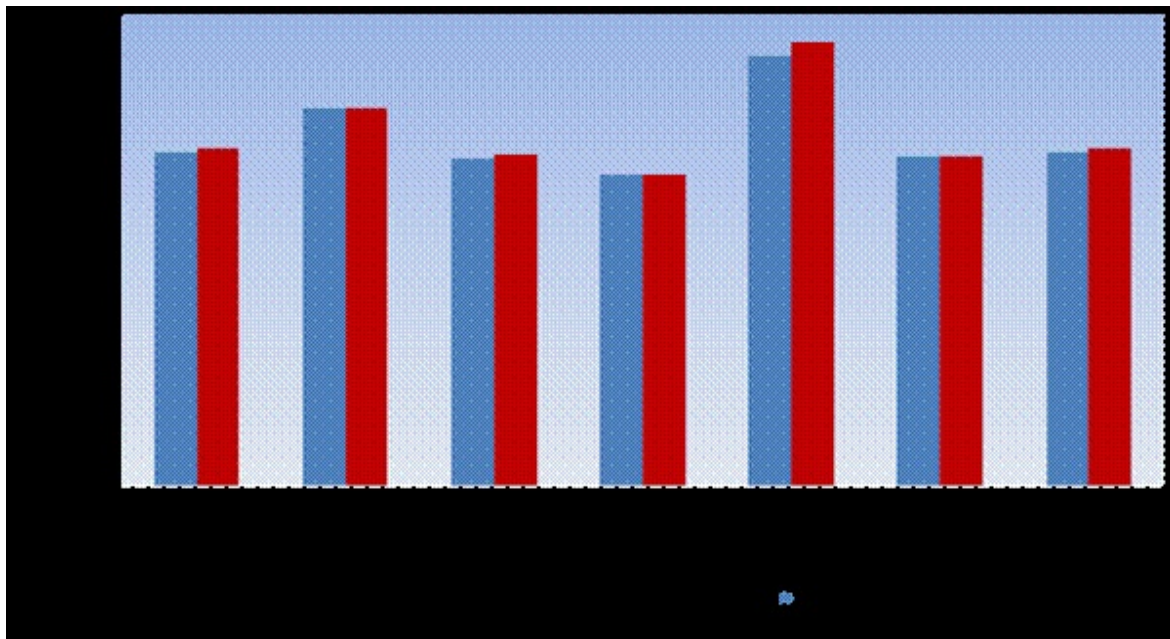
Y-o-Y Inflation based on CPI-IW (Food and General)



All-India Group-wise CPI-IW for April, 2022 and May, 2022

Sr. No.	Groups	April, 2022	May, 2022
I	Food & Beverages	127.5	129.5
II	Pan, Supari, Tobacco & Intoxicants	144.4	144.7
III	Clothing & Footwear	125.6	126.5
IV	Housing	118.9	118.9
V	Fuel & Light	164.9	169.7
VI	Miscellaneous	125.8	126.4
	General Index	127.7	129.0

CPI-IW: Groups Indices



The next issue of CPI-IW for the month of June, 2022 will be released on Friday, 29th July, 2022. The same will also be available on the office website www.labourbureaunew.gov.in.

(Release ID: 1838321)