

ALL-INDIA CONSUMER PRICE INDEX NUMBERS FOR AGRICULTURAL AND RURAL LABOURERS – FEBRUARY, 2023

Posted On: 20 MAR 2023 9:03PM by PIB Delhi

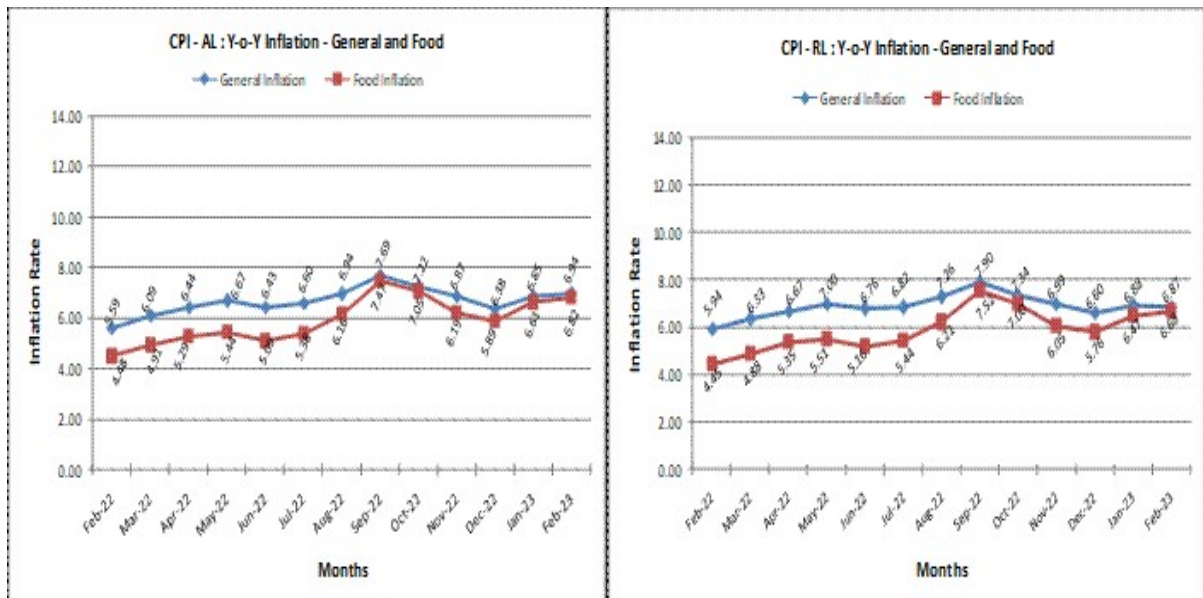
The All-India Consumer Price Index Number for Agricultural Labourers and Rural Labourers (Base: 1986-87=100) for the month of February, 2023 increased by 1 point each to stand at 1171 (One thousand one hundred and seventy one) and 1182 (One thousand one hundred and eighty two) points respectively. The maximum upward pressure on general index of Agricultural Labourers and Rural Labourers came from miscellaneous group to the extent of 0.93 & 0.98 points respectively mainly due to increase in prices of medicine, doctor's fee, barber charges, bus fare, washing shop, cinema ticket, etc.

The rise/fall in index varied from State to State. In case of Agricultural Labourers, it recorded an increase of 1 to 8 points in 12 States and a decrease of 1 to 7 points in 8 States. Tamilnadu with 1359 points topped the index table whereas Himachal Pradesh with 915 points stood at the bottom.

In case of Rural Labourers, it recorded an increase of 1 to 8 points in 12 States and a decrease of 1 to 7 points in 8 States. Tamilnadu with 1349 points topped the index table whereas Himachal Pradesh with 961 points stood at the bottom.

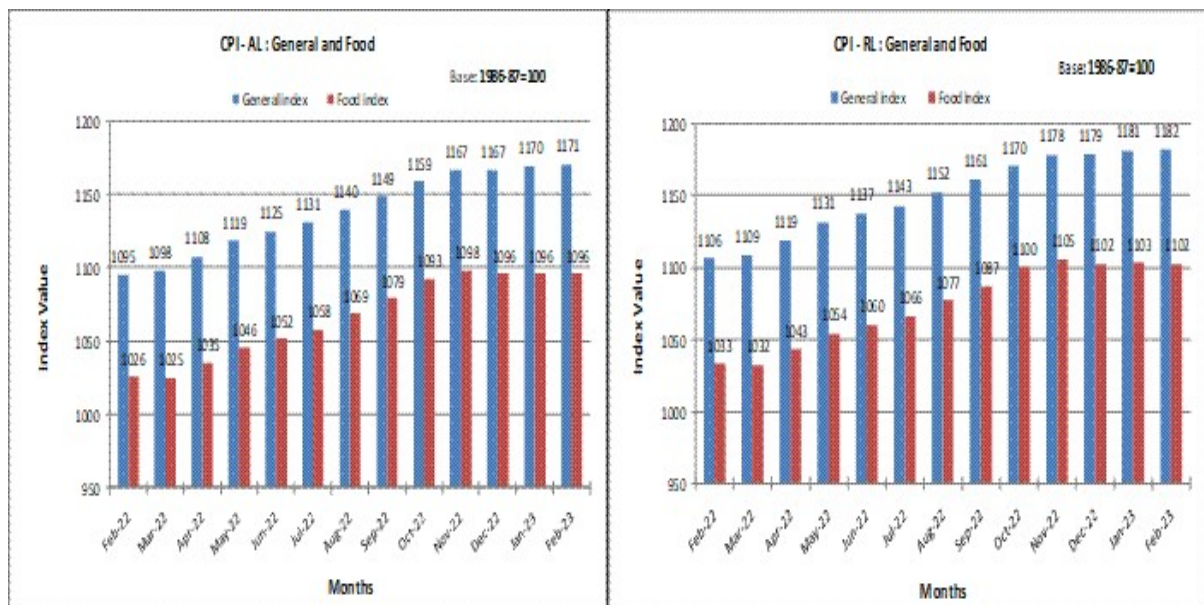
Amongst states, the maximum increase in the Consumer Price Index Numbers for Agricultural and Rural Labourers was experienced by Gujarat State (8 points each) mainly due to rise in the prices of rice, wheat-atta, jowar, pulses, vegetables & fruits, firewood, etc. On the contrary, the maximum decrease in the Consumer Price Index Numbers for Agricultural Labourers and Rural Labourers was experienced by Assam State (7 points each) mainly due to fall in the prices of fish-fresh, chillies green, vegetables & fruits, etc.

Point to point rate of inflation based on the CPI-AL and CPI-RL stood at 6.94% & 6.87% in February, 2023 compared to 6.85% & 6.88% respectively in January, 2023 and 5.59% and 5.94% respectively during the corresponding month of the previous year. Similarly, Food inflation stood at 6.82% & 6.68% in February, 2023 compared to 6.61% & 6.47% respectively in January, 2023 and 4.48% & 4.45% respectively during the corresponding month of the previous year.



All-India Consumer Price Index Number (General & Group-wise):

Group	Agricultural Labourers		Rural Labourers	
	January, 2023	February, 2023	January, 2023	February, 2023
General Index	1170	1171	1181	1182
Food	1096	1096	1103	1102
Pan, Supari, etc.	1965	1977	1974	1986
Fuel & Light	1295	1296	1286	1288
Clothing, Bedding & Footwear	1235	1243	1274	1280
Miscellaneous	1237	1245	1241	1250



The CPI – AL and RL for the month of March, 2023 will be released on 20th April, 2023.

MJPS/SSV

(Release ID: 1908962)