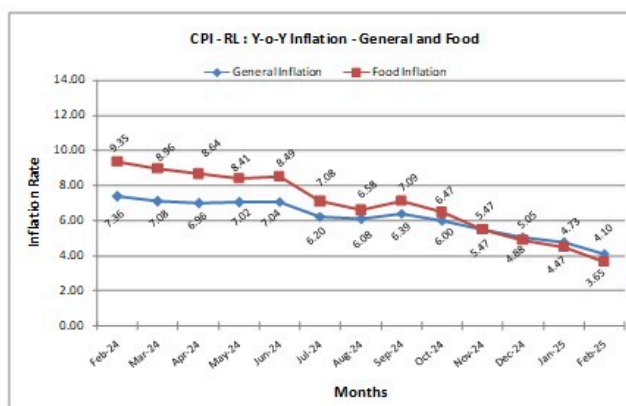
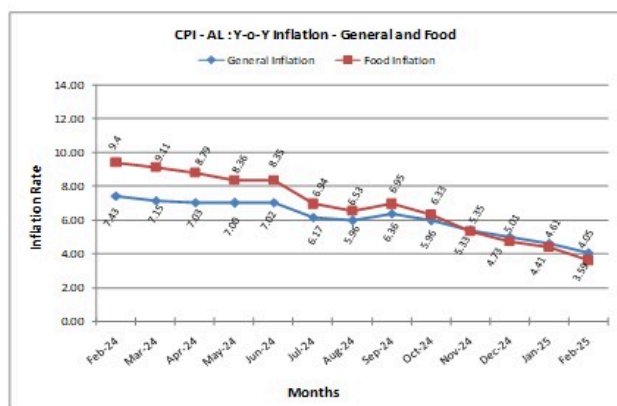


ALL-INDIA CONSUMER PRICE INDEX NUMBERS FOR AGRICULTURAL AND RURAL LABOURERS – FEBRUARY, 2025

Posted On: 24 MAR 2025 11:13AM by PIB Delhi

The All-India Consumer Price Index for Agricultural Labourers (CPI-AL) and Rural Labourers (CPI-RL) (Base: 1986-87=100) decreased by 7 points each, for the month of February 2025, falling to 1309 and 1321 points, respectively.

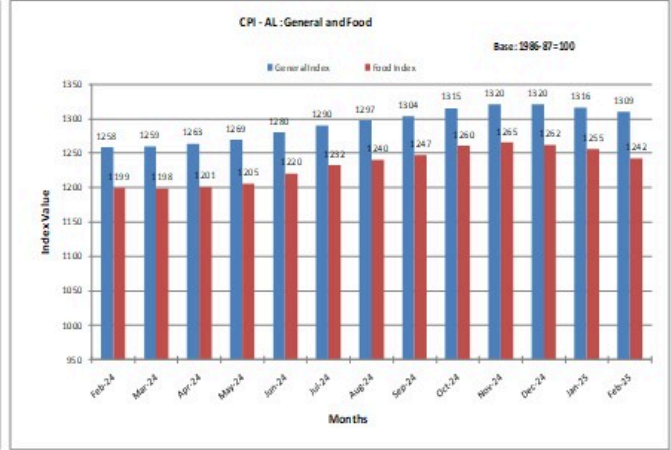
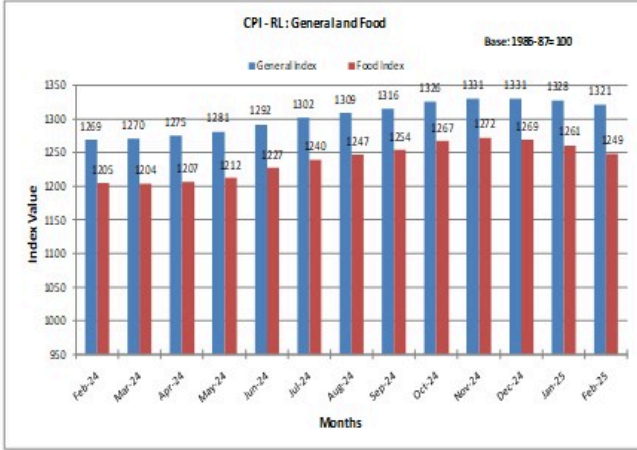
The year-on-year inflation rates based on CPI-AL and CPI-RL for February 2025 were recorded at 4.05% and 4.10%, respectively, compared to 7.43% and 7.36% in February 2024. The corresponding figures for January 2025 stood at 4.61% for CPI-AL and 4.73% for CPI-RL.



All India Consumer Price Index (General and Group-wise):

Group	Agricultural Labourers		Rural Labourers	
	January, 2025	February, 2025	January, 2025	February, 2025
General Index	1316	1309	1328	1321
Food	1255	1242	1261	1249
Pan, Supari, etc.	2103	2118	2111	2125
Fuel & Light	1390	1391	1380	1380

Clothing, Bedding & Footwear	1332	1336	1396	1402
Miscellaneous	1385	1390	1385	1389



Himanshu Pathak

(Release ID: 2114257) Visitor Counter : 6275

Read this release in: Urdu , Hindi , Marathi , Bengali , Gujarati