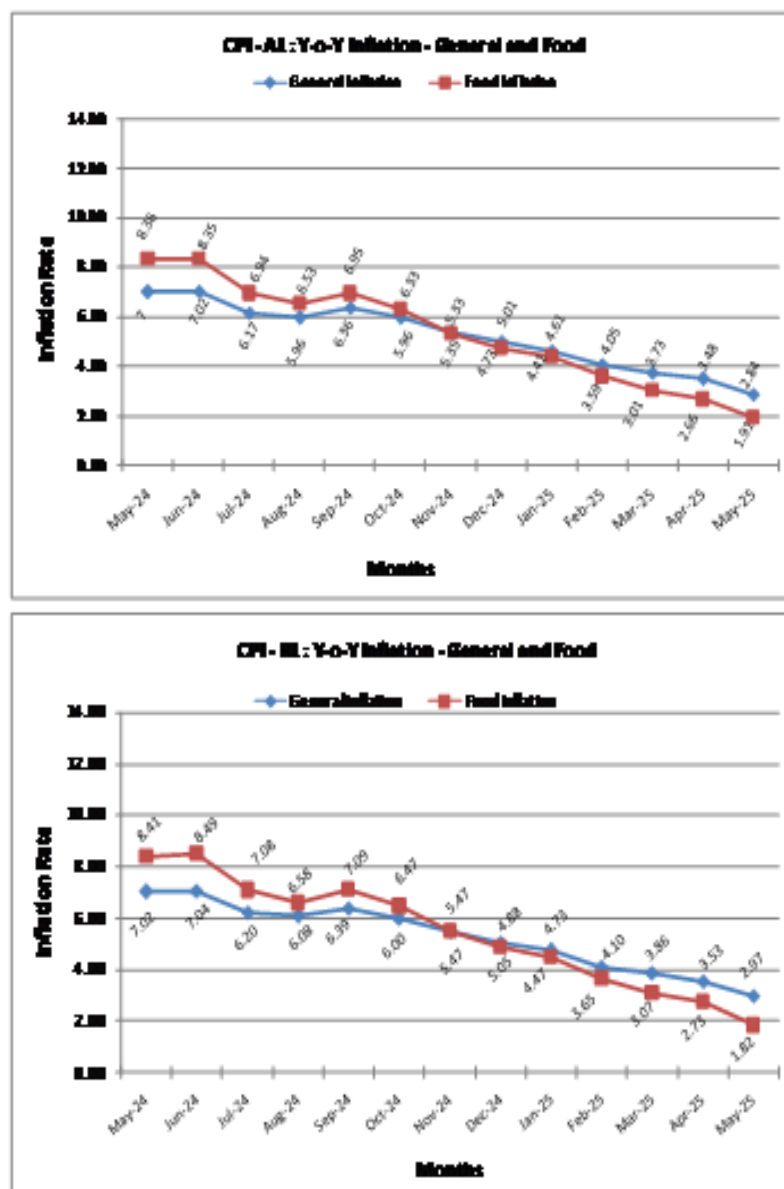


ALL-INDIA CONSUMER PRICE INDEX NUMBERS FOR AGRICULTURAL AND RURAL LABOURERS – MAY, 2025

Posted On: 20 JUN 2025 5:00PM by PIB Delhi

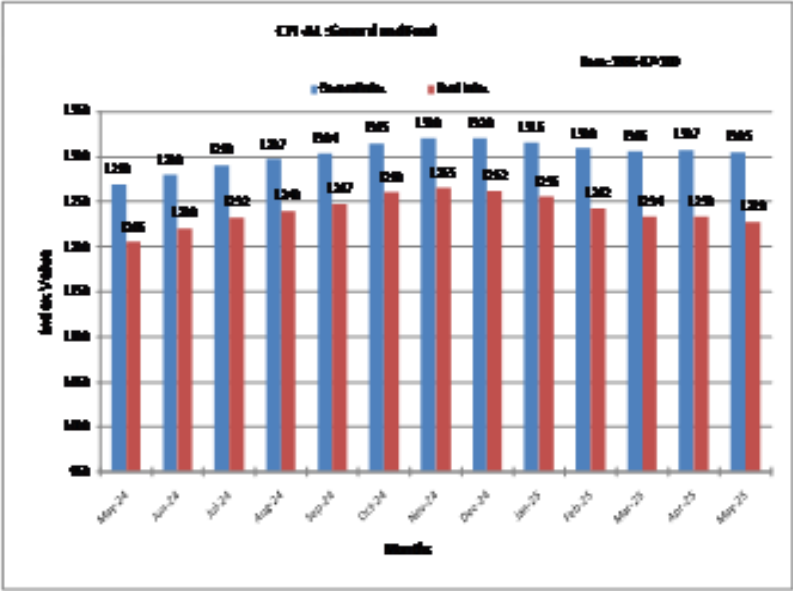
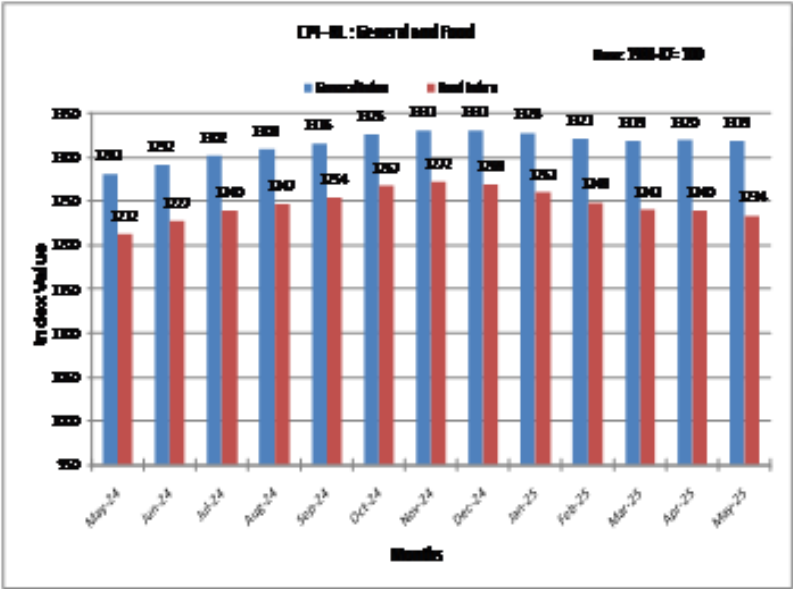
The All-India Consumer Price Index for Agricultural Labourers (CPI-AL) and Rural Labourers (CPI-RL) (Base: 1986-87=100) decreased by 2 points and 1 point for the month of May 2025, to stand at 1305 and 1319 points, respectively.

The year-on-year inflation rates based on CPI-AL and CPI-RL for May 2025 were recorded at 2.84% and 2.97%, respectively, compared to 7.00% and 7.02% in May 2024. The corresponding figures for April 2025 stood at 3.48% for CPI-AL and 3.53% for CPI-RL.



All India Consumer Price Index (General and Group-wise):

Group	Agricultural Labourers		Rural Labourers	
	April, 2025	May, 2025	April, 2025	May, 2025
General Index	1307	1305	1320	1319
Food	1233	1228	1240	1234
Pan, Supari, etc.	2143	2146	2152	2156
Fuel & Light	1404	1408	1393	1397
Clothing, Bedding & Footwear	1344	1351	1412	1418
Miscellaneous	1405	1415	1405	1415



Manish Gautam/Divyanshu Kumar/Anjelina Alexander

